

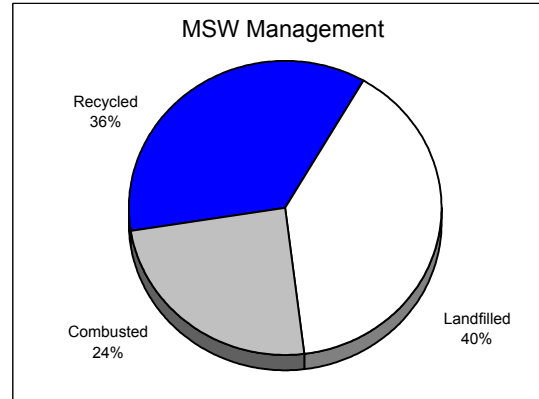
Palm Beach County

(Jan. 1, 2002 - Dec. 31, 2002)

1. Population ¹ 1,183,197

2. MSW Management (tons) ²

A. Landfilled	732,591
B. Combusted	447,295
C. Recycled	659,435
D. Total	1,839,321
E. Total Pounds per Capita Per Day ¹	8.52



3. MSW Collected & Recycled

A. Minimum Five Wastes ³

	Collected (tons)	Recycled (%)
1. Newspaper	105,323	59
2. Glass	53,673	37
3. Aluminum Cans	8,069	44
4. Plastic Bottles	30,809	10
5. Steel Cans	12,346	93

B. Other Recyclables

6. C&D Debris	221,717	30
7. Yard Trash	196,473	93
8. White Goods	20,720	80
9. Tires	17,531	19
10. Process Fuel	72,806	100

C. Other Wastes 1,172,660 19

D. Total Recycling Rate(%) 36

E. Adjusted Recycling Rate (%) ⁵ 36

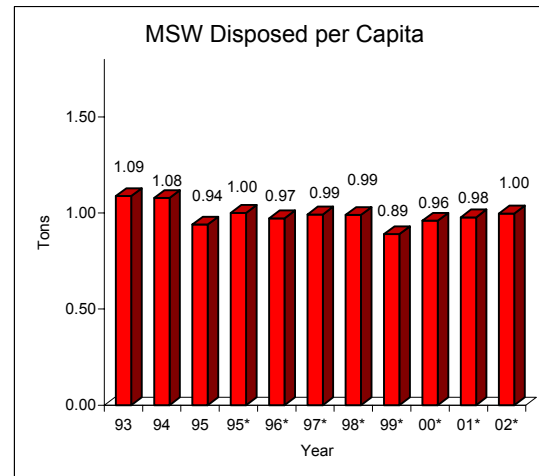
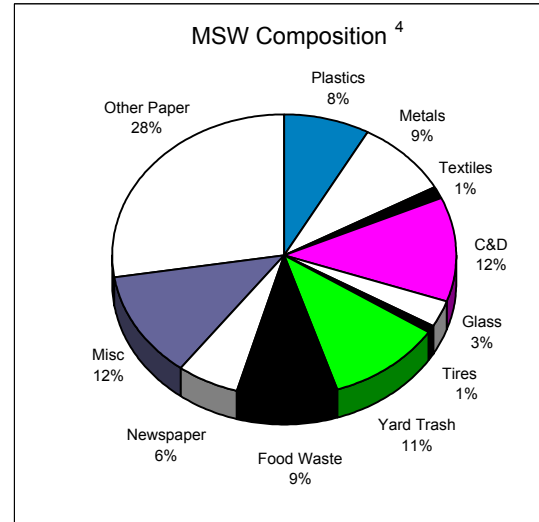
F. Waste Reduction Per Capita (%)

(A negative number indicates an increase in the MSW disposal rate per capita.)

1. Base Year: July 1988-June 1989	29
2. Base Year: July 1989-June 1990	22
3. Base Year: July 1990-June 1991	6
4. Base Year: July 1991-June 1992	10
5. Base Year: July 1992-June 1993	9
6. Base Year: July 1993-June 1994	8

G. Participation in Recycling ⁶

	Units	Percent ⁷
1. Single-family Curbside	346,628	72
2. Multi-family Curbside ⁸	230,282	65
3. Commercial ⁹	37,392	
a) Scheduled collection		0
b) On call collection		0



¹ Official 2002 Governor's Office estimate.

² From 2002 Municipal Solid Waste Data Report.

³ The Legislature established a goal of 50 percent for each material by the end of 1994.

⁴ Some materials have been combined: Metals include Aluminum Cans, Steel Cans, Ferrous and Non-ferrous metals, and White Goods; Other Paper includes Corrugated, Office and Other Paper; and Plastics include Plastic Bottles and Other Plastics.

⁵ The legislature established a goal of 30 percent by the end of 1994 for all counties with a population of over 75,000.

⁶ Participation means availability and usage of recycling services (As of June 1999).

⁷ Percentage of total county units (single/multi-family dwellings and commercial establishments) participating in recycling.

⁸ Includes apartments, condominiums and others.

⁹ May also include government and institutional.

* Calendar year data.