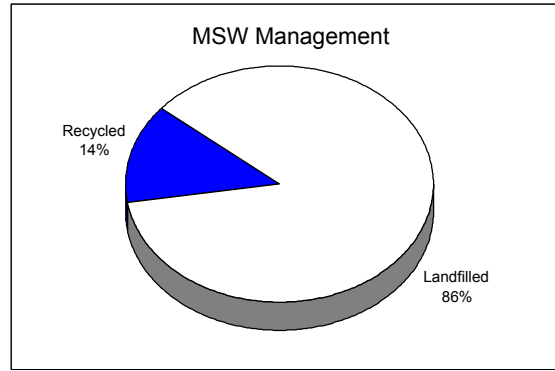


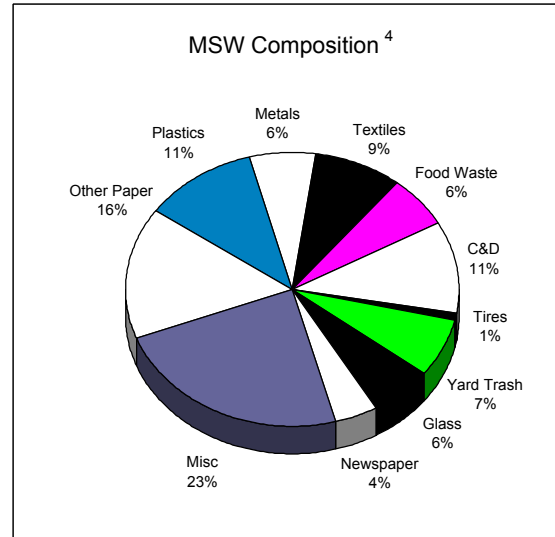
De Soto County

(Jan. 1, 2002 - Dec. 31, 2002)

1. Population ¹	32,798
2. MSW Management (tons) ²	
A. Landfilled	27,934
B. Combusted	0
C. Recycled	4,409
D. Total	32,343
E. Total Pounds per Capita Per Day ¹	5.40



3. MSW Collected & Recycled	Collected (tons)	Recycled (%)
A. Minimum Five Wastes ³		
1. Newspaper	1,397	23
2. Glass	1,955	0
3. Aluminum Cans	559	2
4. Plastic Bottles	559	2
5. Steel Cans	559	0



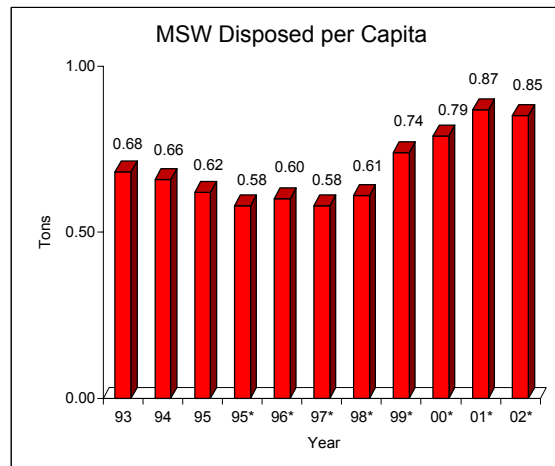
B. Other Recyclables		
1. C&D Debris	3,492	0
2. Yard Trash	2,235	96
3. White Goods	419	28
4. Tires	279	66
5. Process Fuel	0	0

C. Other Wastes	20,889	8
D. Total Recycling Rate (%)		14
E. Adjusted Recycling Rate (%) ⁵		14

F. Waste Reduction Per Capita (%)
 (A negative number indicates an increase in the MSW disposal rate per capita.)

1. Base Year: July 1988-June 1989	-6
2. Base Year: July 1989-June 1990	-17
3. Base Year: July 1990-June 1991	-11
4. Base Year: July 1991-June 1992	-17
5. Base Year: July 1992-June 1993	-25
6. Base Year: July 1993-June 1994	-29

G. Participation in Recycling ⁶	Units	Percent ⁷
1. Single-family Curbside	12,998	0
2. Multi-family Curbside ⁸	1,131	0
3. Commercial ⁹	547	0
a) Scheduled collection		0
b) On call collection		0



¹ Official 2002 Governor's Office estimate.

² From 2002 Municipal Solid Waste Data Report.

³ The Legislature established a goal of 50 percent for each material by the end of 1994.

⁴ Some materials have been combined: Metals include Aluminum Cans, Steel Cans, Ferrous and Non-ferrous metals, and White Goods; Other Paper includes Corrugated, Office and Other Paper; and Plastics include Plastic Bottles and Other Plastics.

⁵ The legislature established a goal of 30 percent by the end of 1994 for all counties with a population of over 75,000.

⁶ Participation means availability and usage of recycling services (As of June 1999).

⁷ Percentage of total county units (single/multi-family dwellings and commercial establishments) participating in recycling.

⁸ Includes apartments, condominiums and others.

⁹ May also include government and institutional.

* Calendar year data.