

North Palm Beach County Data Summary Report

DRAFT

Khurram Moiz, Frank Metzler

**Prepared for:
Florida Department of Environmental Protection
2600 Blair Stone Road
Tallahassee, FL 32399-2400**

**Prepared by:
Tetra Tech, Inc.
1401 Oven Park Dr.
Suite 201
Tallahassee, FL 32308**

Forward

This report was prepared by Tetra Tech, Inc., under contract to the Florida Department of Environmental Protection, as part of the project entitled Northern Palm Beach County Pollutant Loading and Abatement Analysis which is funded by EPA Grant #X984676-00-2.

Table of Contents

Forward	i
List of Acronyms	iii
1. Introduction	1
1.1 Purpose of this Project	2
2. Data Summary	8
2.1 Rainfall	9
2.2 Flow	11
2.3 Stage	13
2.4 Air Temperature	15
2.5 Water Quality	17
2.6 Land Use	34
2.7 Net Solar Radiation	36
2.8 Total Radiation	38
2.9 Wind Speed	40
2.10 Additional Parameters	42
2.11 Point Sources	43
2.12 Topography	47
2.13 Soils	48
Appendix A – Data Retrieved Through the FEDET Tool	49

List of Acronyms

COE	United States Corps of Engineers
DER	Department of Environmental Regulation
EPA	United States Environmental Protection Agency
FDEP	Florida Department of Environmental Protection
FEDET	Florida Environmental Data Extraction Tool
LRECD	Loxahatchee River Environmental Control District
NADP	National Atmospheric Deposition Program
NCDC	National Climactic Data Center
NOAA	National Oceanic and Atmospheric Administration
SFWMD	South Florida Water Management District
STORET	STORage and RETrieval
USEPA	United States Environmental Protection Agency
USGS	United States Geological Survey
WBID	Waterbody Identification Number
WPB	West Palm Beach
WRDB	Water Resources Database

1. Introduction

The North Palm Beach County Pollutant Loading and Abatement Analysis project area (project area) encompasses a total area of approximately 765 square miles along the southeastern coast of Florida extending inland to the eastern shore of Lake Okeechobee. The project area includes the historic watershed of the Loxahatchee River and the Lake Worth Lagoon. The project area has experienced dynamic land uses changes and rapid population growth since the 1940's with no indications that this pattern will come to an end any time soon. The natural landscape and hydrology of the project area has undergone significant alterations associated with population growth and urban and agricultural development. Many of these changes in the landscape and hydrology were implemented to support this population growth.

Starting in the 1940's, the federal government and the State of Florida began construction of the Central and South Florida Project (C&SF) to develop a complex and interconnected system of reservoirs, canals, levees and control structures intended to provide for the various water related needs of south Florida including drainage for land reclamation, flood control, water supply management and recreation. While the C&SF has done a commendable job of fulfilling its original intended purposes, there have been related negative environmental consequences as well. Diminished or re-routed flows, altered hydroperiods of too little or too much water at the wrong times, elimination of habitat for wildlife, and diminished water quality are some of the negative consequences associated with growth in south Florida and construction of the C&SF.

In light of this situation, the State of Florida and the United States Army Corps of Engineers have undertaken an ambitious plan to address some of these negative environmental impacts while at the same time addressing the continuing water related needs confronting south Florida. The Comprehensive Everglades Restoration Plan (CERP) lays out an organizational framework, a conceptual plan and a timetable to achieve environmental restoration while simultaneously constructing the necessary infrastructure to support continued population growth in south Florida. The popular CERP mantra of "Getting the Water Right" implies that by providing the right quantities of the right quality water at the right times and the right places we will be able to achieve the multiple and sometimes competing objectives of CERP. Getting the water right will involve the planning, design and construction of roughly 68 individual components including above and below-ground water storage reservoirs, stormwater treatment areas, canal improvements, new pumps and water control structures, and aquifer storage and recovery wells (United States Army Corps of Engineers, 1999). The total cost to implement this plan over the next 30 to 40 years will likely exceed \$12,000,000,000.

To facilitate the design, construction and operation of these CERP components, they have been clustered into particular geographic regions and time frames that are commonly referred to as Projects. A CERP Project is planned, designed and will be built under the guidance of a Project Delivery Team (PDT) that is composed of engineers, planners and scientists from numerous federal, state and local agencies. It is the job of these PDTs to ensure that the projects to be built will achieve the numerous design objectives set forth in the CERP.

The CERP North Palm Beach County Project, Part 1, (NPBC Project) is one of these CERP projects. The NPBC Project as currently envisioned is an assemblage of the following six components:

- L-8 Basin Modifications (Component K, Phase 1)
- C-51 and L-8 Basin Reservoir (Component GGG)
- C-17 Backpumping and Treatment (Component X6)
- C-51 Backpumping and Treatment (Component Y)
- Lake Worth Lagoon Restoration (Other Project Element)
- Pal-Mar and J.W. Corbett Wildlife Management Area Hydropattern Restoration (Other Project Element)

Some of the intended purposes of these components will be to operate them in an integrated manner to achieve the following:

- Prevent excess stormwater from being discharged to the Lake Worth Lagoon in harmful amounts and frequencies
- Capture this excess stormwater in surface water impoundments such as the proposed C-51 / L-8 reservoir and the Grassy Waters preserve for use at a later time
- Re-direct or restore sufficient quantities of flow to the Loxahatchee Slough and Loxahatchee River for environmental benefits by improving the hydrologic connection of the Grassy Waters with the slough and river
- Provide increased water storage capacity, water conveyance and water supplies for the North Palm Beach County Improvement District
- Provide for improved flood control in areas currently receiving insufficient protection

1.1 Purpose of this Project

A great deal of planning, hydrologic modeling and preliminary design work is underway at the federal, state and local level to identify the most cost effective ways to achieve these objectives with the components listed above. Significant attention is being directed at how to get the quantity, timing and distribution of water right for the North Palm Beach County Project.

An outstanding critical question regarding the NPBC Project that must be addressed is how the efforts to alter the current hydrology of the project area will affect surface water quality. The Florida Department of Environmental Protection is the state agency responsible for issuing water quality certification for proposed CERP components. To the extent that construction and operation of the NPBC Project will direct new sources of water with unknown water quality characteristics to new locations, FDEP requires reasonable assurance that these changes will not cause or contribute to violations of state water quality standards immediately downstream or in the receiving waterbodies of importance such as the Grassy Waters Preserve, the Loxahatchee River and Estuary. In addition, where opportunities exist to plan, design and operate CERP components to help address existing water quality problems, FDEP may encourage the PDT to optimize those water quality restoration opportunities where possible relative to other project goals and objectives.

The purpose of the North Palm Beach County Pollutant Loading and Abatement Analysis is to provide FDEP with the following:

- A technically based understanding of the current surface water quality conditions and water quality concerns within the study area that may be affected by implementation of the NPBC Project
- A surface water quality analysis / modeling tool that helps identify how the proposed NPBC Project may affect water quality within the project area in positive and negative ways.
- An identification of current internal and external loads and concentrations of nutrients and total suspended solids that move through the NPBC project area and are delivered to downstream receiving waterbodies.
- An identification of appropriate or optimum loads and/or concentrations of nutrients and total suspended solids that would be protective of critical waterbodies within the study area such as the Grassy Waters Preserve, Loxahatchee River and Loxahatchee Estuary.

The following illustrations define the study area presented in this report: Figure 1-1 is an overall depiction of the North Palm Beach Study Area, Figure 1-2 is a depiction of the SFWMD drainage basins within the study area, Figure 1-3 is a depiction of the most recent delineation of FDEPs basin segmentation in the study area, and Figure 1-4 depicts the major canals, CERP components and SFWMD structures within the study area.

Figure 1-1. North Palm Beach Study Area

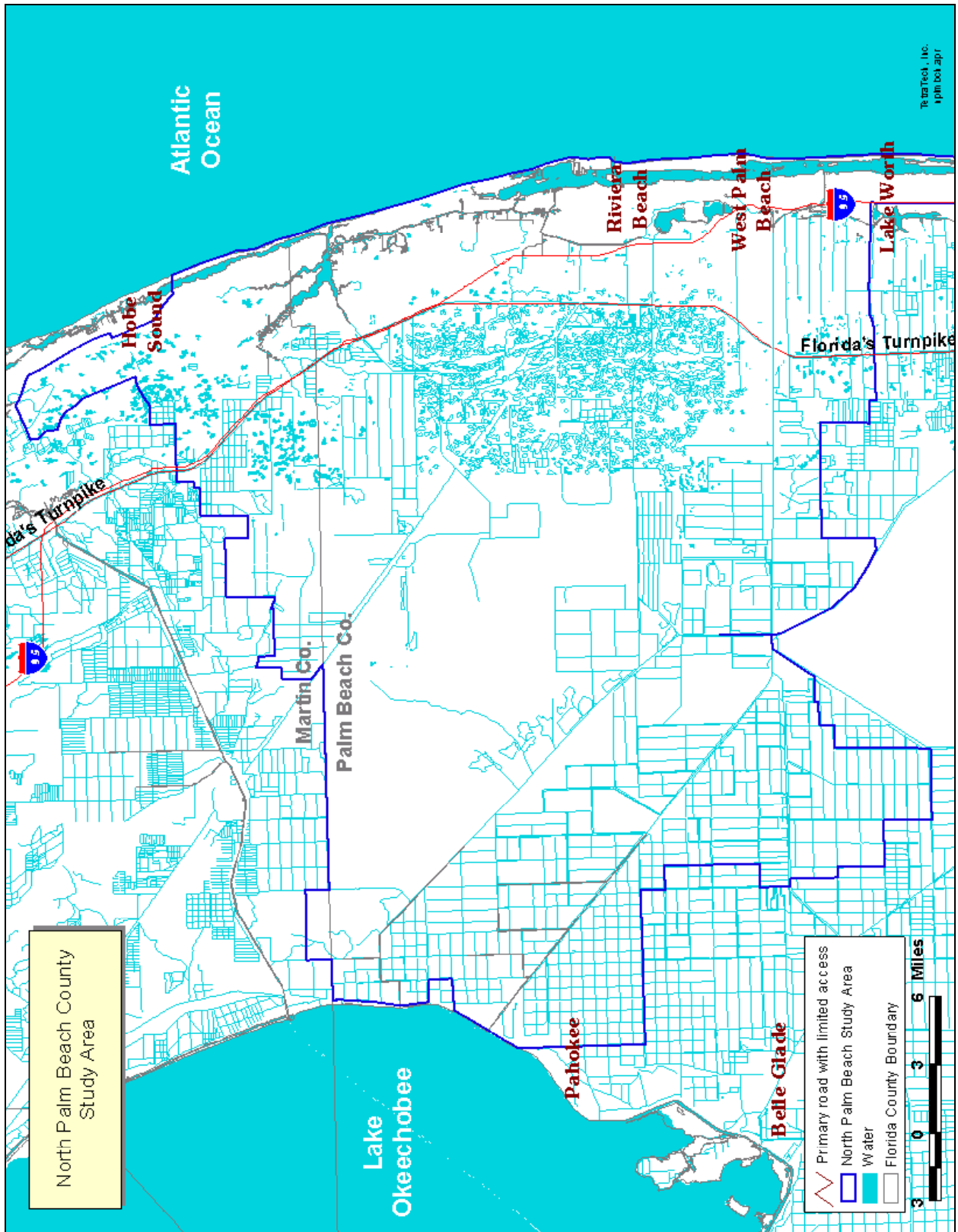


Figure 1-2. North Palm Beach Study Area SFWMD Drainage Basins

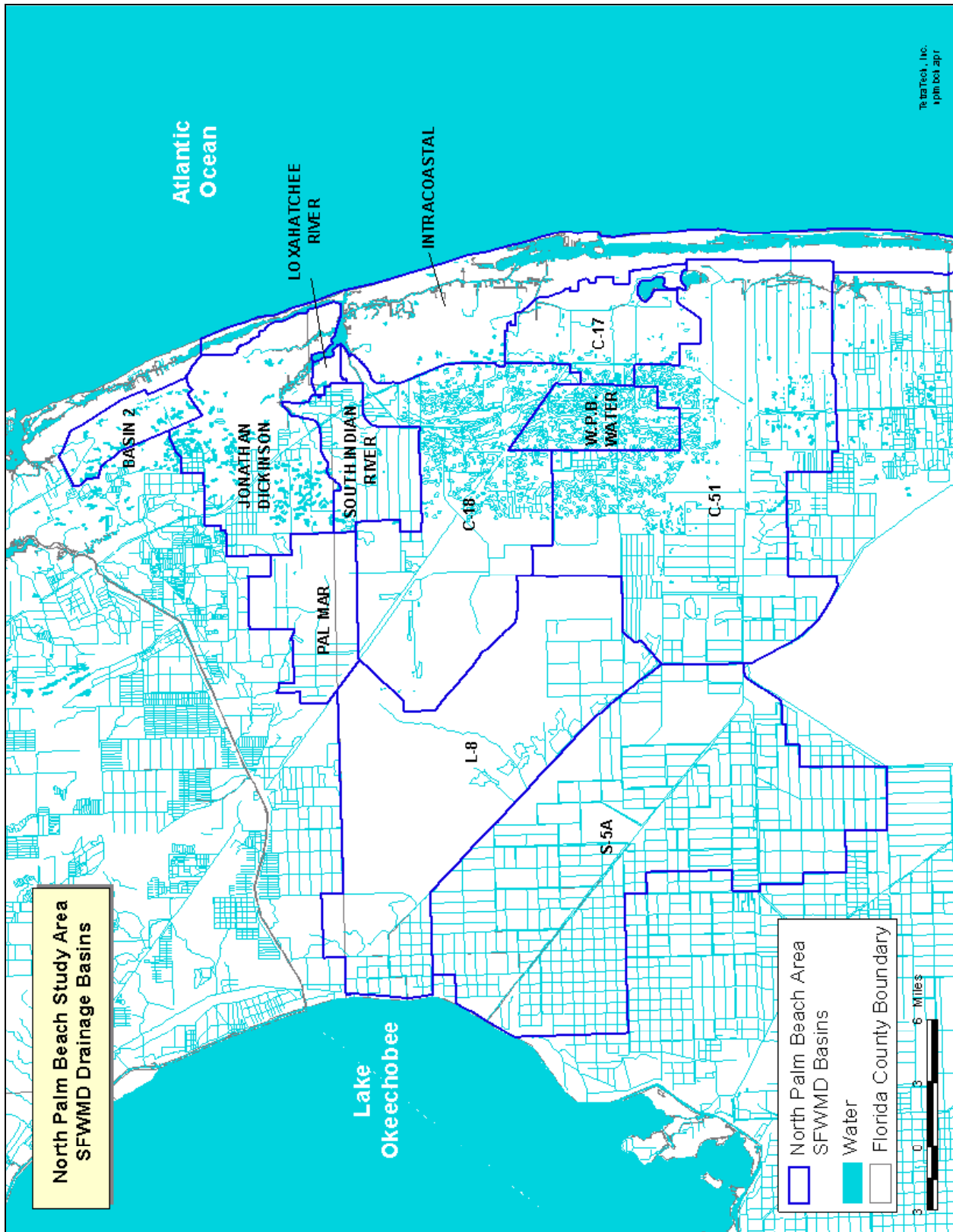


Figure 1-3. North Palm Beach Basin FDEP WBIDs

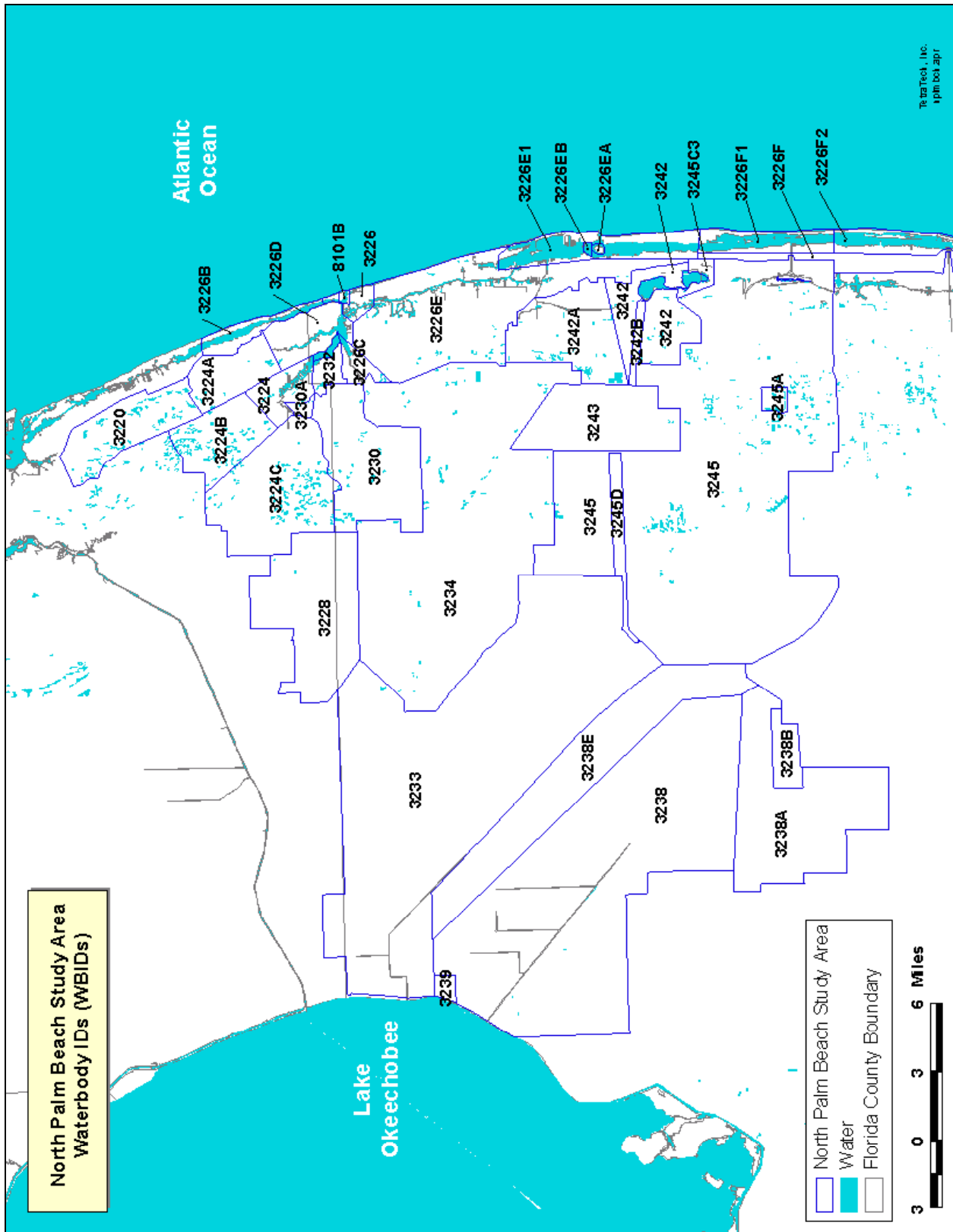
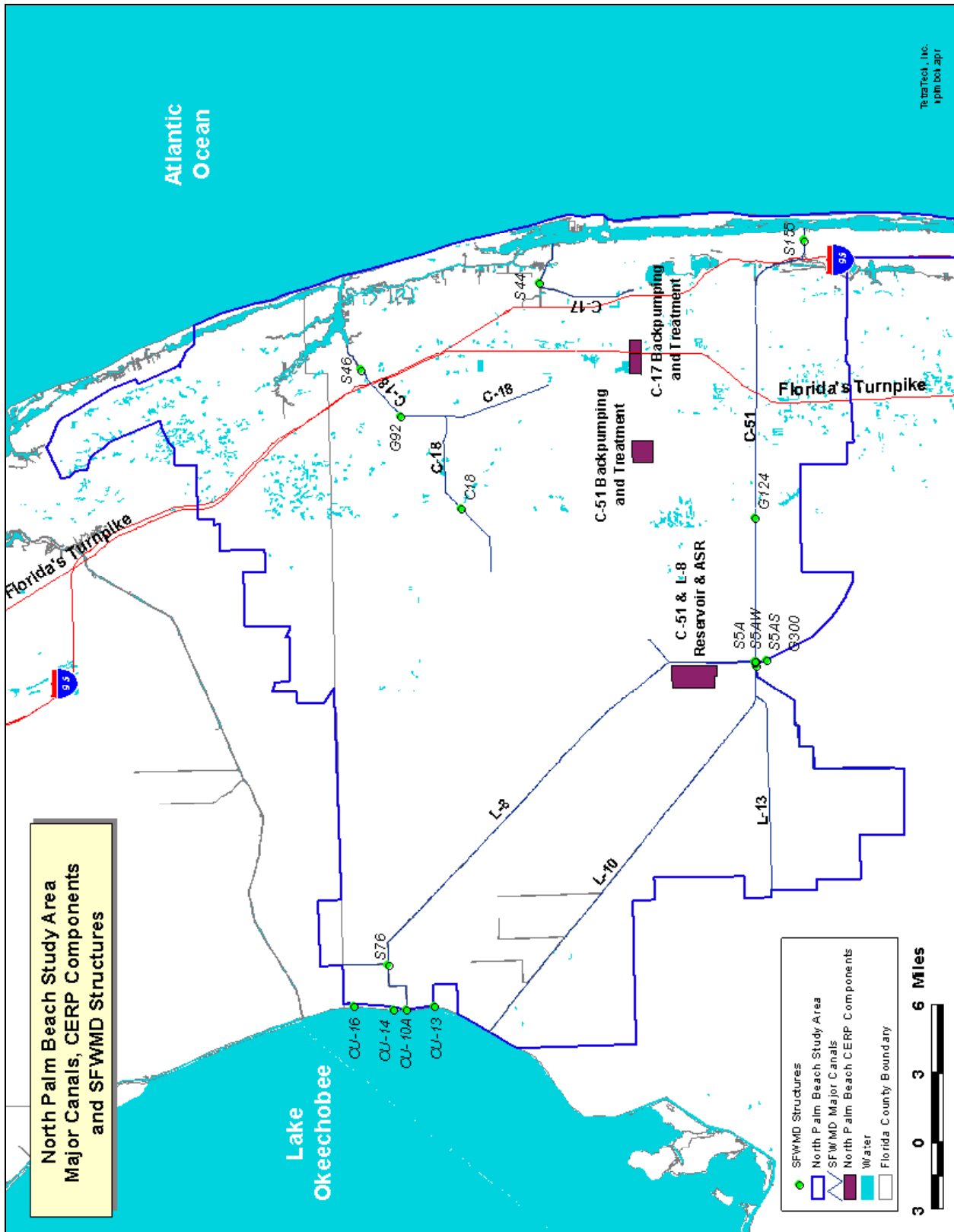


Figure 1-4. North Palm Beach Major Canals, CERP Components and SFWMD Structures



2. Data Summary

Data were obtained for northern region of Palm Beach County and its surrounding areas. The tables in this report summarize all the data pertinent to the watershed model development for this project. The tables include data from monitoring sites that lie within the boundaries of SFWMD drainage basins in the north Palm Beach County area, namely the following: C-17, C-18, C-51, Intracoastal, Jonathan Dickinson, L-8, Loxahatchee River, Pal Mar, South Indian River, WPB Water and Basin 2.

This report includes summaries of the following point data:

- Rainfall
- Flow
- Stage
- Air Temperature
- Water Quality
- Land Use
- Net Solar Radiation
- Total Radiation
- Wind Speed
- Additional Parameters
- Point Sources

This report also includes summaries of the following spatial data:

- Topography
- Soils

The metadata tables provided in this report provide pertinent information concerning the data to facilitate data referencing. The metadata include some or all of the following:

- Station
- Station Name
- Agency
- Start Date
- End Date
- Data Filename

2.1 Rainfall

Rainfall data were obtained from the following sources:

- SFWMD DBHYDRO database for all the major SFWMD drainage basins in this study area.

Table 2-1 (DBHYDRO) provides the following metadata for the rainfall data:

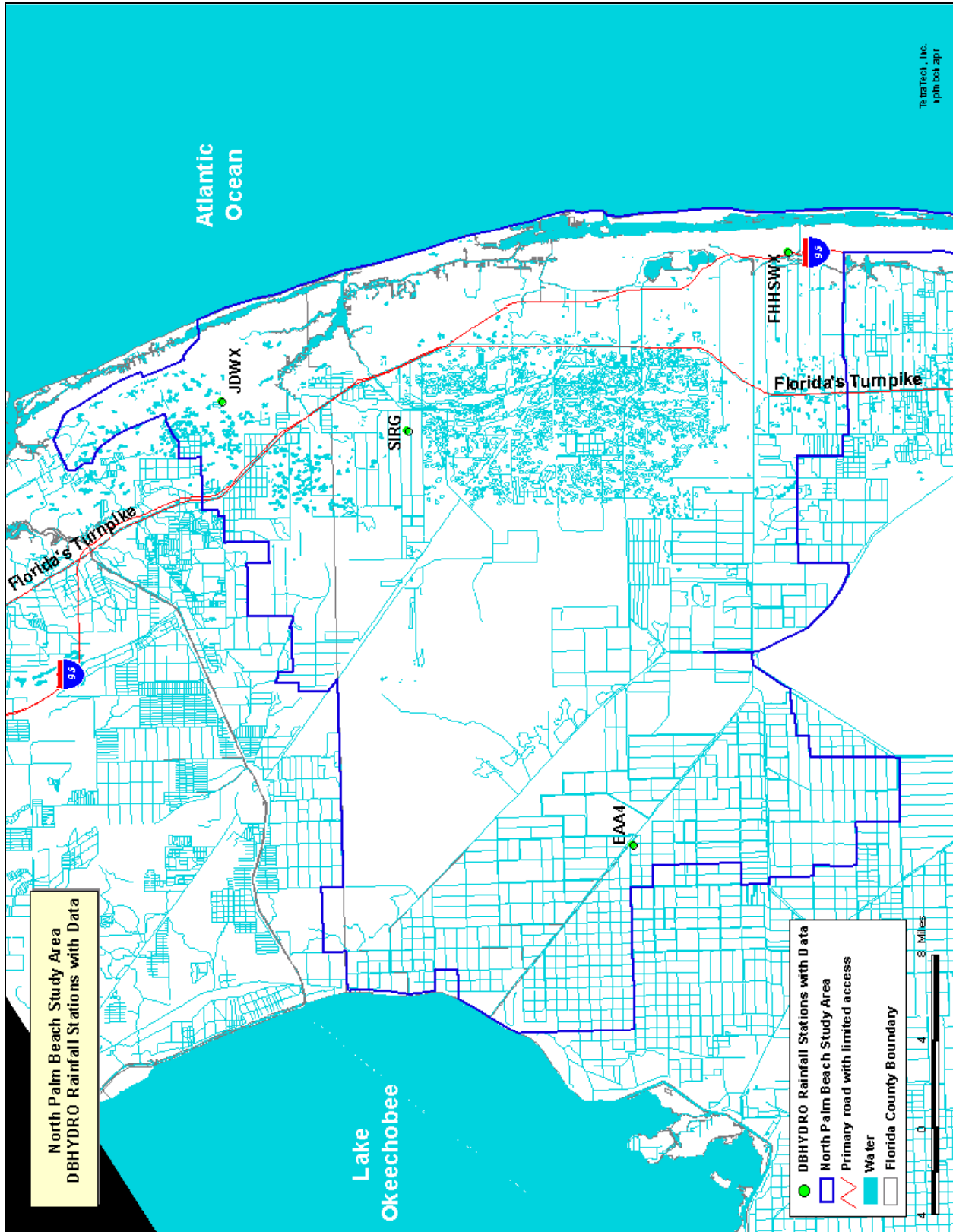
- Station
- Agency
- Start Date
- End Date
- Data Filename

All rainfall data are in units of inches per day. Figure 2-1 provides an illustration of the locations of the DBHYDRO rainfall gauging stations.

Table 2-1. Metadata for DBHYDRO Rainfall data

Station	Agency	Start Date	End Date	Filename
EAA4	WMD	1992	2003	dbhydro-rain1-npb.txt
FHHSWX	WMD	2000	2002	dbhydro-rain1-npb.txt
JDWX	WMD	1997	2003	dbhydro-rain1-npb.txt
SIRG	WMD	1993	2003	dbhydro-rain2-npb.txt

Figure 2-1. DBHYDRO Rainfall Gauging Stations



2.2 Flow

Flow data were obtained from the following sources:

- SFWMD DBHYDRO database for all the major SFWMD drainage basins in this study area.
- USGS online database. <http://waterdata.usgs.gov/fl/nwis>

Table 2-2 (DBHYDRO) and Table 2-3 (USGS) provide some or all of the following metadata for the flow data:

- Station
- Agency
- Start Date
- End Date
- Data Filename

All flow data are in units of cubic feet per second. Figure 2-2 provides an illustration of the locations of the DBHYDRO flow stations.

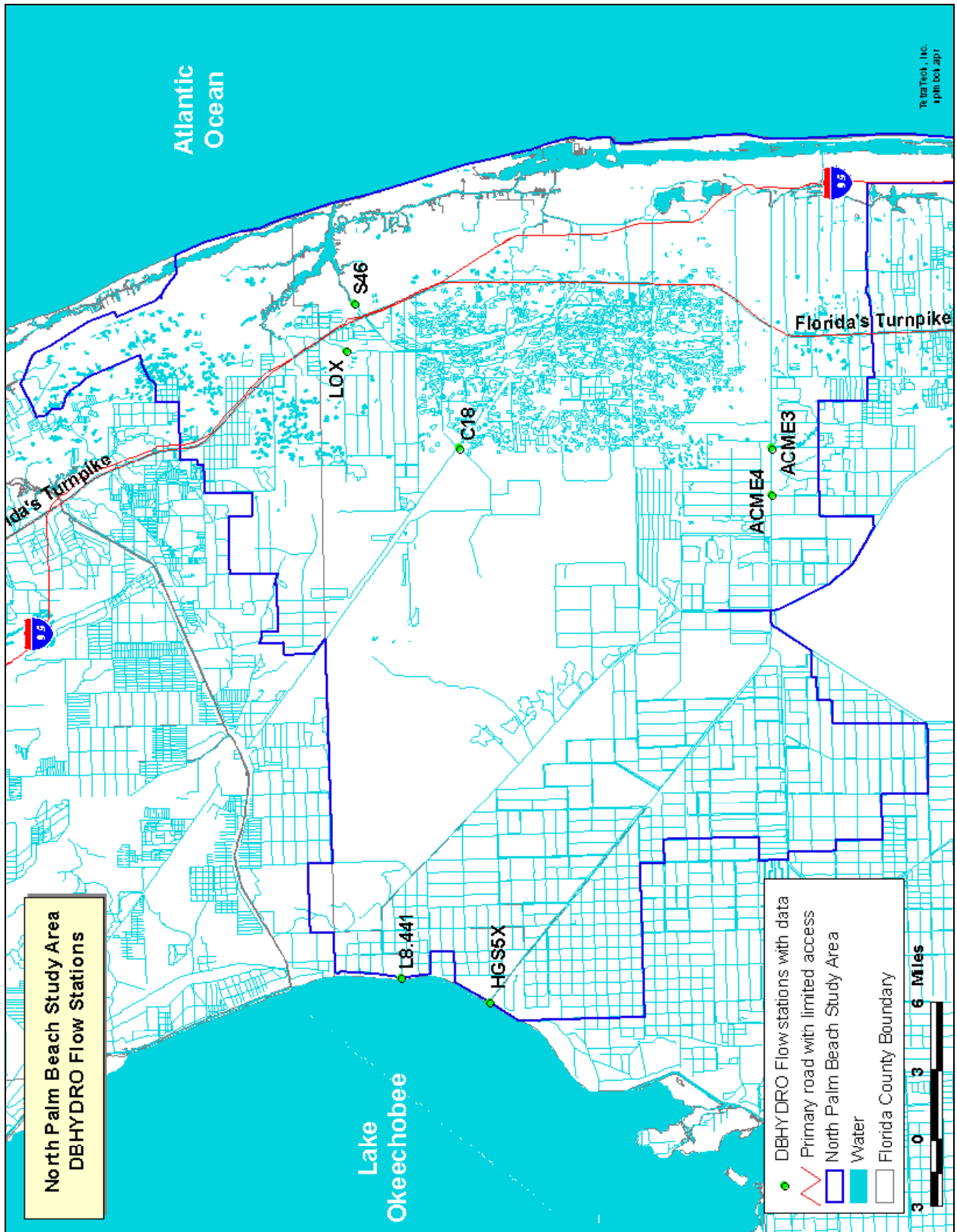
Table 2-2 Metadata for DBHYDRO Flow Stations

Station	Agency	Start Date	End Date	Filename
ACME3	AID	1/1/1980	5/31/2002	acme3-flow.txt
ACME4	AID	1/1/1980	5/31/2002	acme4-flow.txt
C18	USGS	12/21/1979	4/28/1982	c18-flow.txt
HGS5X	USGS	11/7/1939	12/31/2002	hgs5x-USGS-flow.txt
HGS5X	WMD	1/1/1963	12/31/2002	hgs5x-WMD-flow.txt
L8.441	USGS	8/11/1976	12/31/2002	l8-441-USGS-flow.txt
L8.441	WMD	1/1/1970	12/31/2002	l8-441-WMD-flow.txt
L8.441	WMD	1/1/1963	12/31/1990	l8-441-WMD2-flow.txt
LOX	USGS	4/1/1971	2/25/2002	lox-USGS-flow.txt
LOX	USGS	6/9/1982	6/12/1985	lox-USGS2-flow.txt
S46	USGS	3/1/1959	9/30/1965	s46-flow.txt

Table 2-3 Metadata for USGS Flow Stations

Station	Station Description	Start Date	End Date
2278000	WEST PALM BEACH CANAL AT S352 AT CANAL POINT FLA	11/7/1939	9/30/1999
2280500	HILLSBORO CANAL BELOW S351 NR SOUTH BAY FLA	3/22/1957	9/30/1999
2283498	N NEW RIVER CA AT S-2 AND S351 NR SOUTH BAY FL	10/1/1967	9/30/1999
2283500	N NEW RIVER CANAL BELOW S351 NR SOUTH BAY FLA	2/1/1957	9/30/1999
2286400	MIAMI CANAL AT S-354 AND S-3 AT LAKE HARBOR, FLA	10/1/1957	9/30/1999
265501080364900	L-8 CANAL AT US HWY 441 NR CANAL POINT FLA	8/11/1976	9/30/1999

Figure 2.2 DBHYDRO Flow Stations.



2.3 Stage

Stage (water level) data were obtained from the following sources:

- SFWMD DBHYDRO database for all the major SFWMD drainage basins in this study area.

Table 2-4 (DBHYDRO) provides the following metadata for the stage data:

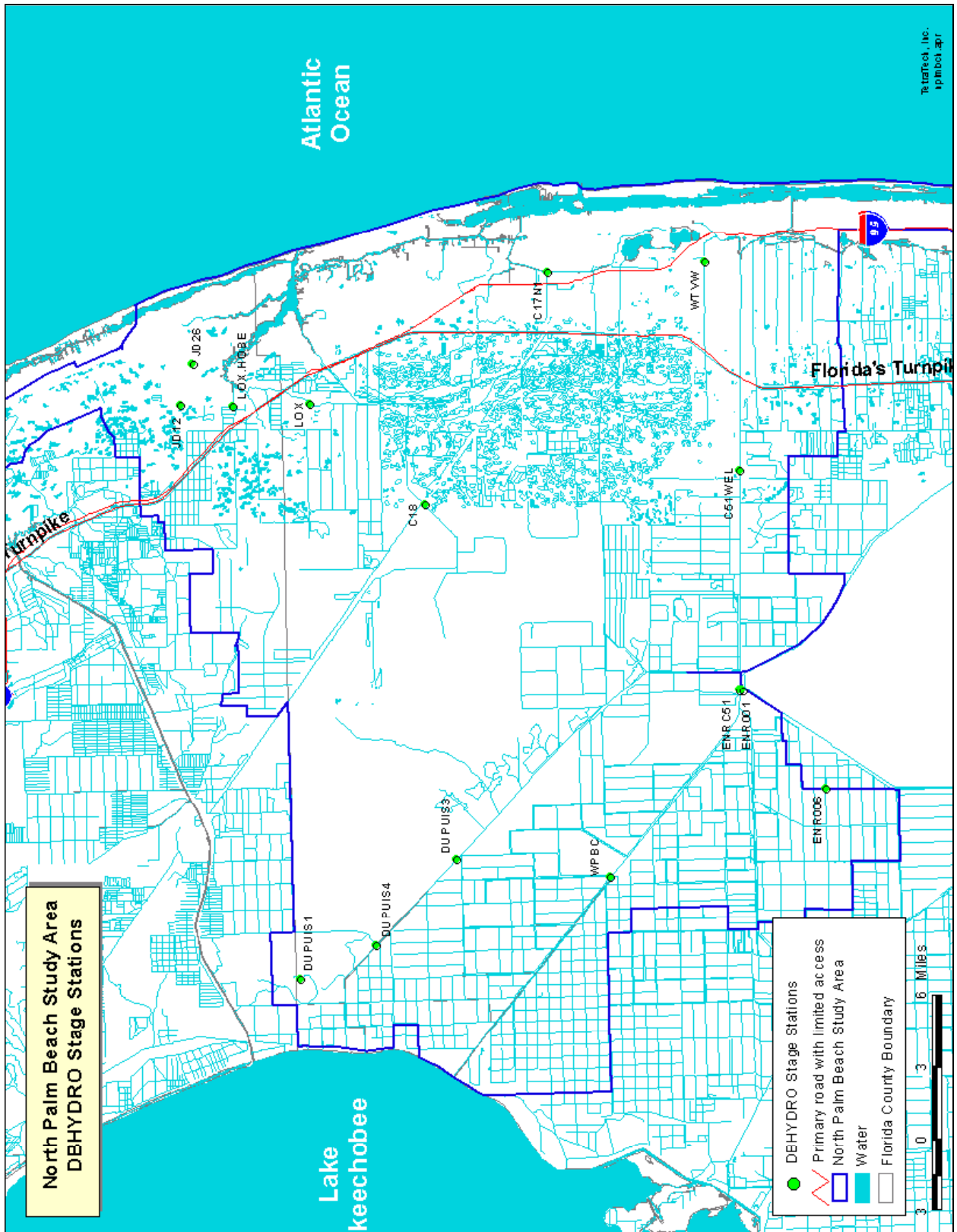
- Station
- Agency
- Start Date
- End Date
- Data Filename

All stage data are in units of feet. Figure 2-3 provides an illustration of the locations of the DBHYDRO stage stations.

Table 2-4 Metadata for DBHYDRO Stage Stations

Station	Agency	Start Date	End Date	Filename
C17N1	WMD	1998	2003	dbhydro-stage1.txt
C18	USGS	1979	1982	dbhydro-stage1.txt
C18	WMD	1991	1998	dbhydro-stage1.txt
C51WEL	WMD	1973	2003	dbhydro-stage1.txt
DUPUIS1	WMD	1990	2003	dbhydro-stage1.txt
DUPUIS3	WMD	1990	2003	dbhydro-stage1.txt
DUPUIS4	WMD	1990	2003	dbhydro-stage1.txt
ENR001	WMD	1994	2003	dbhydro-stage1.txt
ENR006	WMD	1993	2003	dbhydro-stage1.txt
ENRC51	WMD	1995	2003	dbhydro-stage1.txt
JD12	WMD	1997	2003	dbhydro-stage2.txt
JD26	WMD	1997	2003	dbhydro-stage2.txt
JD6	WMD	1997	2003	dbhydro-stage2.txt
LOX	USGS	1971	2002	dbhydro-stage2.txt
LOX.HOBE	USGS	1979	1982	dbhydro-stage2.txt
WPBC	WMD	1985	2003	dbhydro-stage3.txt
WTVW	WMD	1992	2003	dbhydro-stage3.txt

Figure 2-3 DBHYDRO Stage Stations



2.4 Air Temperature

Air temperature data were obtained from the following sources:

- SFWMD DBHYDRO database for all the major SFWMD drainage basins in this study area.

Table 2-5 (DBHYDRO) provides the following metadata for the air temperature data:

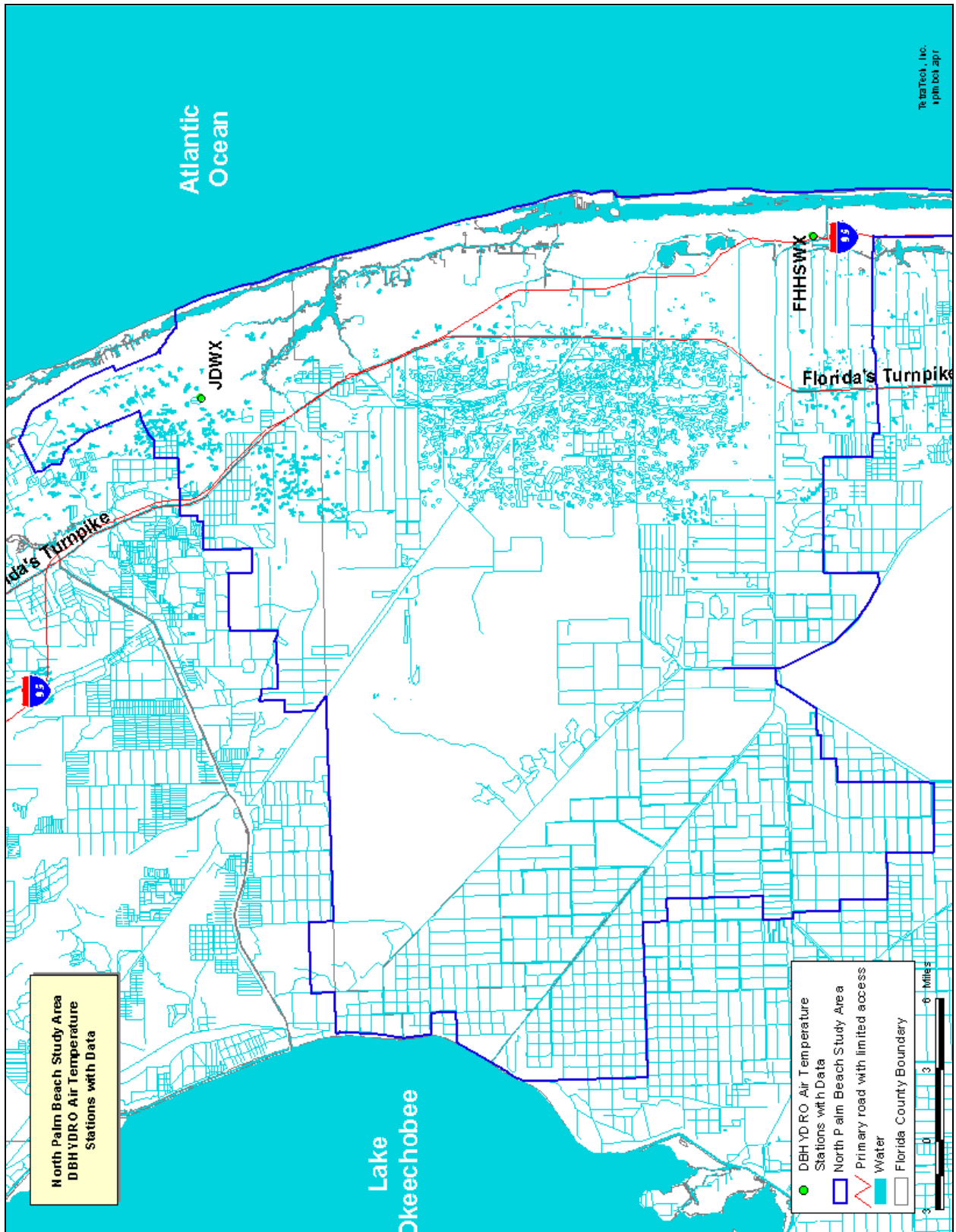
- Station
- Agency
- Start Date
- End Date
- Data Filename

All air temperature data are in units of degrees Celsius. Figure 2-4 provides an illustration of the locations of the DBHYDRO air temperature stations.

Table 2-5 Metadata for DBHYDRO Air Temperature Data

Station	Agency	Start Date	End Date	Filename
JDWX	WMD	1997	2003	dbhydro-airt-nbp.txt
FHHSWX	WMD	2000	2002	dbhydro-airt-nbp.txt

Figure 2-4. DBHYDRO Air Temperature Stations



2.5 Water Quality

Water quality data were obtained from the following sources:

- SFWMD DBHYDRO database for all the major SFWMD drainage basins in this study area.
- LRECD
- FEDET – Online data query tool summarizes selected data from numerous water quality datasets used by FDEP to perform water quality characterizations. This also includes data from EPAs Legacy STORET database.
- Though not currently summarized in this report, surface water and groundwater quality data from the L-8 reservoir were also acquired.

Table 2-6 provides a list of the agencies that contributed water quality data to the databases listed above. Tables 2-7 (DBHYDRO, LRECD and FEDET) provides the following metadata for the water quality data:

- Station
- Agency
- Start Date
- End Date
- Filename

Figures 2-5 (DBHYDRO), 2-6 (LRECD) and 2-7 (FEDET) provide illustrations of the locations of the water quality stations. Also, appendix A provides a table summarizing all the data that was retrieved through FEDET and DBHYDRO, organized by station ID and parameters sampled.

A hard copy version of data from the City of West Palm Beach will be reviewed to determine which stations, parameters and period of record may be useful in this effort. Data identified as being useful will be entered into the WRDB tool.

Table 2-6 Water Quality Data Contributing Agencies

Agency Code	Agency Name	Contact	Phone	Program
1113T070	USEPA REGION 4	BRUCE HENRY	(404)562-9246	
11COEJAX	CORPS OF ENGINEERS	WOLFF MARK	(904)791-2168	SURFACE WATER MONITORING DATA
21FLA	FDEP	2600 BLAIRSTONE ROAD TALLAHASSEE, FL	(850)245-8449	FLA DEPT ENVIRONMENTAL PROTECTION WATER QUALITY DATA
21FLBROW	BROWARD COUNTY	218 SW 1ST AVENUE FT LAUDERDALE	(954)519-1241	WATER QUALITY MONITORING DATA
21FLDOH	FL DEPARTMENT OF HEALTH		(404)562-9246	BUREAU OF WATER PROGRAMS
21FLGFWF	FL GME AND FRSH WTR FISH	CONNOR LARRY	(352)742-6438	WATER QUALITY DATA
21FLKWAT	LAKEWATCH - UNIVERSITY OF FLORIDA		(352)392-9617	VOLUNTEER LAKE DATA FROM LAKE WATCH PROGRAM
21FLLOX	LOXAHATCHEE RIVER			
21FLLWDD	LAKE WORTH DRAINAGE DISTR	BAKER MICHAEL	(561)737-3835	AMBIENT MONITORING DATA
21FLPBCH	PALM BEACH COUNTY WQ LAB	3323 BELVEDERE RD BLDG 502 WEST PALM BEACH	(407)355-4011	WATER QUALITY MONITORING
21FLSFWM	SOUTH FLA WATER MNGT DIST	3301 GUN CLUB RD WEST PALM BEACH	(561)682-2081	SURFACE WATER QUALITY
21FLWPB	DEP SE DISTRICT	1801 SE HILLMORE DR		

Table 2-7 Metadata for DBHYDRO, LRECD and FEDET Water Quality Stations

Station	Station Name	First Date	Last Date
1113T070263136008003140	Lake Worth, Florida	08/10/1970	08/12/1970
1113T070263212508003075	South End Of Lake Worth	12/01/1969	08/12/1970
1113T070263220008003270	Boynton Canal Above Dam	12/01/1969	08/11/1970
1113T070263242008002360	S Lake Worth Inlet	12/01/1969	08/12/1970
1113T070263314008002500	Buoy 44	12/01/1969	08/12/1970
1113T070263502008002450	Lake Worth, Florida	08/10/1970	08/12/1970
1113T070263654008002330	Lake Worth, Florida	08/10/1970	08/12/1970
1113T070263654008002380	Lake Worth, Florida	12/01/1969	12/04/1969
1113T070263654008002430	Lake Worth, Florida	08/10/1970	08/12/1970
1113T070263837008003110	Lake Worth, Florida	12/01/1969	08/11/1970
1113T070263840008002340	Lake Worth, Florida	08/10/1970	08/12/1970
1113T070264030008002250	Lake Worth, Florida	08/10/1970	08/12/1970
1113T070264030008002480	Lake Worth, Florida	12/01/1969	08/12/1970
1113T070264305008002430	Lake Worth, Florida	12/01/1969	08/12/1970
1113T070264305008002500	Lake Worth, Florida	08/10/1970	08/12/1970
1113T070264305008002550	Lake Worth, Florida	08/10/1970	08/12/1970
1113T070264412008002520	Lake Worth, Florida	08/10/1970	08/12/1970
1113T070264505008002380	Lake Worth, Florida	08/10/1970	08/12/1970
1113T070264551008002480	Lake Worth, Florida	12/01/1969	12/04/1969
1113T070264700008002480	Lake Worth, Florida	08/10/1970	08/12/1970
1113T070264705008002280	Lake Worth, Florida	08/10/1970	08/12/1970
1113T070264819008002540	Lake Worth, Florida	12/01/1969	08/12/1970
1113T070264830008003220	Lake Worth, Florida	12/01/1969	08/11/1970
1113T070264850008004300	Lake Worth, Florida	12/01/1969	08/11/1970
1113T070264952008003370	Lake Worth, Florida	12/01/1969	08/12/1970
1113T070265035008003280	Lake Worth, Florida	12/01/1969	08/11/1970
11COEJAX3ENP10009	W Palm Beach Canal Above S-5a	02/01/1993	11/01/1993
11COEJAX3ENP10010	W Palm Beach Canal 1 M Below S-5ae	02/01/1993	11/01/1993
11COEJAX3LOK10012	W Palm Bch Canal at US 441	03/03/1993	10/18/1993
21FLA 27020553	W Side Icww at Red Mrkr 42 near Hobe Sound	05/13/1998	05/13/1998
21FLA 28010052	Nw Fork Loxahatchee R S Of Sr706	04/12/1972	01/29/1973
21FLA 28010053	Loxahatchee R at Cypress Crk	04/05/1972	01/22/1973
21FLA 28010054	Loxahatchee R at Sr 706	04/05/1972	01/22/1973
21FLA 28010055	Loxahatchee at Kitchen Creek	04/05/1972	12/06/1976
21FLA 28010056	Loxahatchee R at Jon-Dick St Pk	10/07/1969	09/07/1988
21FLA 28010057	N Fork Loxahatchee at Co Ln Rd B	04/05/1972	01/22/1973
21FLA 28010058	Loxahatchee R N Fork Bridge	10/07/1969	01/22/1973
21FLA 28010059	Loxahatchee R SW Fork Bridge	04/26/1971	10/30/1972
21FLA 28010060	Loxahatchee R at Islandway Bridg	04/05/1972	04/19/1975
21FLA 28010061	Loxahatchee Riv & Alt A1a Br	04/26/1971	10/01/1973
21FLA 28010062	Bridge 1 Mi W On Sr706	04/16/1971	01/29/1973
21FLA 28010063	Sims Cr at Sr 706	04/26/1971	05/31/1990
21FLA 28010065	Icww at Tequesta Bridge On Sr 70	04/26/1971	09/07/1988
21FLA 28010066	Sims Cr at Center St Bridge	04/12/1972	05/31/1990
21FLA 28010067	Jones Cr Center St Brid W	04/12/1972	05/31/1990
21FLA 28010068	Nw Fork Loxahatchee Turnpike Br	04/12/1972	10/30/1972

Station	Station Name	First Date	Last Date
21FLA 28010069	Kitchen Creek at J.Dixon Stat. Pk near Bound	01/05/1970	01/29/1973
21FLA 28010071	Sr706 And Jones Creek Bridge	04/12/1972	05/31/1990
21FLA 28010079	Lox R at Sr 706. W Of Jupiter	04/12/1972	07/23/1997
21FLA 28010080	Lox R. First Dam N Sr 706 W Jupiter	05/12/1981	01/20/1989
21FLA 28010081	Lox R at Turnpike. W Of Jupiter	05/12/1981	01/20/1989
21FLA 28010082	Lox R Upstream Trapper Nelsons	05/12/1981	01/19/1989
21FLA 28010083	Lox R at Trapper Nelsons	05/12/1981	01/19/1989
21FLA 28010085	Lox.R,Cnl To. Sta 1 W Of Jupiter	05/10/1982	01/18/1989
21FLA 28010086	Lox.R, Cnl To. Sta 2 W Of Jupite	05/10/1982	01/18/1989
21FLA 28010089	C-18 Cnl at Bend to Ne. W Jpter	05/10/1982	08/20/1997
21FLA 28010091	Lox R, Cnl To. W Of Jupiter. Sta	05/10/1982	07/23/1997
21FLA 28010092	Lox R.Nw Of Jupiter Sta 10	05/22/1981	07/06/1988
21FLA 28010093	Lox R. NW Of Jupiter Sta 11	01/18/1973	07/06/1988
21FLA 28010094	Lox R - NW Fork in Jupiter Sta 1	05/22/1981	09/07/1988
21FLA 28010095	Lox R.- SW Fork in C-18 nr Jupit	05/22/1981	09/07/1988
21FLA 28010096	Lox R.N Fork - S Cnty Line	05/22/1981	09/07/1988
21FLA 28010097	Lox - Grass Bed near Confluence	05/07/1982	05/04/1983
21FLA 28010105	Cypress Cr at Turnpike	01/18/1973	08/18/1995
21FLA 28010126	Hobe Sound Icw at Mrkr 40	10/01/1973	09/07/1988
21FLA 28010128	Pratt : Whitney Canal at Fence	02/14/1973	06/27/1988
21FLA 28010129	Game Canal at Youth Cons Camp	10/18/1983	09/07/1988
21FLA 28010130	Pond nr Corbett Youth Cons Camp	10/18/1983	09/07/1988
21FLA 28010135	C-18 Canal at Sr 786 %Pga Blvd<	08/20/1974	09/07/1988
21FLA 28010141	W Palm Bch Canal nr Lk Okeechobe	08/12/1975	08/15/1980
21FLA 28010144	Lox Rv .35 Mi W Alt A1a near Is.	09/15/1975	12/13/1994
21FLA 28010146	Hills Cnl at Icw Deerfield Beach	10/07/1974	09/06/1978
21FLA 28010147	Hills Cnl US 1 Brdg Deerfield Bc	10/07/1974	09/06/1978
21FLA 28010148	Hills Cnl Dixie Hwy Deerfld Beac	10/07/1974	08/08/1989
21FLA 28010223	North Fk Loxahatchee River Ref Bio Station	07/23/1992	09/21/1998
21FLA 28010224	Nw Fork Of Loxahatchee River Bio Ref Station	07/23/1992	09/21/1998
21FLA 28010233	Upstream Of Trigas Dishcharge Point nr Indiantwn	08/23/1993	08/23/1993
21FLA 28010276	C-18 Canal nr S Shore 10 M W Of Jupiter Ro Disc	09/06/1995	09/06/1995
21FLA 28010278	C-18 Canal Mid-Channel West Of Simms Ck	09/06/1995	09/06/1995
21FLA 28010279	C-18 Canal nr S Shore West Of Simms Ck	09/06/1995	09/06/1995
21FLA 28010280	C-18 Canal NE Of Control Structure S-46	09/06/1995	09/06/1995
21FLA 28010320	N Fk Lox at Bridge Road Hobe Sound	05/08/1997	05/08/1997
21FLA 28010321	N Fk Loxahatchee at Eaglewood Subdivision	05/08/1997	05/08/1997
21FLA 28010322	N Fk Loxahatchee River at N Jd Park Boundary	05/08/1997	05/08/1997
21FLA 28010323	N Fk Loxahatchee in Jonathan Dickenson State Pk	05/08/1997	05/08/1997
21FLA 28010324	West Branch N Fk Loxahatchee at Jd Park Road	05/08/1997	05/08/1997
21FLA 28010325	East Branch N Fk Loxahatchee at Jd Park Road	05/08/1997	05/08/1997
21FLA 28010327	Nw Fork Loxahatchee R at Dnstrm Side G92 Spllway	07/23/1997	07/23/1997
21FLA 28010329	100 Ft Inside L5 Canal off River	07/23/1997	07/23/1997
21FLA 28010330	Nw Fork Between L5 And L4	07/23/1997	07/23/1997
21FLA 28010331	Canal L4 Which Disch to NW Fork	07/23/1997	08/20/1997
21FLA 28010332	Canal L3 Disch to NW Fork Lox River	07/23/1997	07/23/1997
21FLA 28010333	Nw Fork Lox R Btwn L2 And L3 Lateral Canals	07/23/1997	07/23/1997
21FLA 28010334	L2 Canal Which Disch to NW Fork Lox River	07/23/1997	08/20/1997

Station	Station Name	First Date	Last Date
21FLA 28010336	Natural Streamlet Flowing Into NW Fork Lox River	08/20/1997	08/20/1997
21FLA 28010337	L6 Canal Upstrm NW Fork Loxahatchee River	08/20/1997	08/20/1997
21FLA 28010338	L7 Canl Upstrm NW Fork Lox River	08/20/1997	08/20/1997
21FLA 28010615	C-18 Canal, Loxahatchee River Ro	01/28/1980	04/11/1989
21FLA 28010616	Nw Fork Creek at Indiantown Road	04/12/1972	04/11/1989
21FLA 28010710	Lake Boca Raton SE Of Marker 65	12/03/1975	08/07/1985
21FLA 28010715	Nw Fk Loxahatchee R nr Brg Islwa	05/16/1983	04/11/1989
21FLA 28010716	Loxahatchee R at Tequesta-At Teq	05/16/1983	04/11/1989
21FLA 28010717	Loxahatchee R at Jupiter Alt Hwy	09/15/1975	11/26/1979
21FLA 28010718	Loxahatchee R at Jupiter at US #	09/15/1975	04/11/1989
21FLA 28010719	Intracoastal Wwy at Jupiter-Sr70	04/26/1971	07/09/1984
21FLA 28010720	Intracoastal Wwy at Jupiter-Sr70	10/13/1976	04/11/1989
21FLA 28010721	Canal C-18 at Indiantown Rdbridg	05/16/1983	04/11/1989
21FLA 28010722	Intracoastal Wwy nr Juno Beach	03/15/1982	04/11/1989
21FLA 28010723	Intracoastal Wwy at Palm B Garde	09/15/1975	06/04/1990
21FLA 28010724	Little Lake Worth at Pga Blvd Br	09/15/1975	04/11/1989
21FLA 28010725	Icw at US 1 Bridge	01/10/1977	04/11/1989
21FLA 28010726	Canal C-17 at Alt A1a Bridge	05/01/1981	04/11/1989
21FLA 28010727	Earman River at US 1 Bridge	09/15/1975	06/04/1990
21FLA 28010728	Lake Worth at Blue Heron Blvd Br	09/15/1975	06/04/1990
21FLA 28010729	Canal C-18 at Sr710 Bridge	09/15/1975	04/11/1989
21FLA 28010730	C-18 (Hungerland Slough) at Sr 7	09/15/1975	04/11/1989
21FLA 28010731	M Canal at Sr 809 Bridge	09/15/1975	04/11/1989
21FLA 28010733	Wp Beach Canal at Summit Blvd Br	04/11/1989	04/11/1989
21FLA 28010734	Wp Canal at So. Olive Ave Bridge	09/15/1975	06/04/1990
21FLA 28010739	Canal L-17 at Lantana at Sr 807	04/11/1989	04/11/1989
21FLA 28010742	Canal C-16 at Boynton Beh at Us1	09/15/1975	04/11/1989
21FLA 28010750	Canal E-3 nr W. Palm Bch at Sr 8	04/11/1989	04/11/1989
21FLA 28010751	Canal E-1 nr Royal Palm Beach	04/11/1989	04/11/1989
21FLA 28010752	Wp Canal (C-51) nr Royal Palm Bc	04/11/1989	04/11/1989
21FLA 28010757	West Palm Bch Cl at Us441 Bridge	08/20/1979	04/11/1989
21FLA 28010758	Flagler Bridge And Icw	11/15/1988	04/11/1989
21FLA 28010759	Icww And Sr 806 Delray	06/08/1987	04/11/1989
21FLA 28010760	Delray Canal (C-15) at US 1	04/11/1989	04/11/1989
21FLA 28010763	Jupiter Farms And No-1 Canal, S	03/18/1986	04/11/1989
21FLA 28010765	M-1 Canal North Of Sr 80 And Control Structure	04/11/1989	04/11/1989
21FLA 28010766	West Palm Beach Canal, 1 Mi E Of 20 Mi Bend	04/11/1989	04/11/1989
21FLA 28010767	Loxahatchee River Grass Bed	10/22/1981	07/06/1988
21FLA 28010769	Lake Worth at Southern Blvd Bdrge	11/14/1988	04/11/1989
21FLA 28010770	Icw at Palmetto Park, Boca	09/21/1981	06/04/1990
21FLA 28010771	Icw at Ocean Ave, Boynton	05/05/1980	04/11/1989
21FLA 28010773	Little Lk Wrth-Cntr, Lk Wrth Bas	11/05/1984	06/04/1990
21FLA 28010774	Munyon Trans W, Lk Wrth Bas	11/05/1984	06/04/1990
21FLA 28010775	Munyon Trans Mid, Lk Wrth Bas	11/05/1984	06/04/1990
21FLA 28010776	Munyon Trans E, Lk Wrth Bas	11/05/1984	06/04/1990
21FLA 28010777	E Of Icw Nav Mrkr 3, Lk Wrth Bas	11/05/1984	06/04/1990
21FLA 28010778	Carrie Pk West, Lk Wrth Bas	11/05/1984	06/04/1990
21FLA 28010779	Carrie Pk M10, Lk Wrth Bas	11/05/1984	06/04/1990

Station	Station Name	First Date	Last Date
21FLA 28010780	Carrie Pk East, Lk Wrth Bas	11/05/1984	06/04/1990
21FLA 28010781	Lk Wrth at Royal Palm, Lkwrth Ba	11/05/1984	06/04/1990
21FLA 28010782	Icw Nav Mrkr 28, Lk Wrth Bas	11/05/1984	06/04/1990
21FLA 28010783	Lk Wrth at Sr812, Lk Wrth Bas	11/05/1984	06/04/1990
21FLA 28010784	Icw Nav Mrkr 44, Lk Wrth Bas	11/05/1984	03/22/1990
21FLA 28010785	Icw Nav Mrkr 48, Lk Wrth Bas	11/05/1984	06/04/1990
21FLA 28010786	C-16 nr Control Struct Lkwrth Ba	11/05/1984	06/04/1990
21FLA 28010787	Icw at Sr 804, Lk Wrth Bas	11/05/1984	06/04/1990
21FLA 28010788	Icw at Sr 806a, Lk Wrth Bas	11/05/1984	06/04/1990
21FLA 28010789	Icw at Linton Blvd. Lk Wrth Bas	11/05/1984	06/04/1990
21FLA 28010790	C-15 at Spanish Trail, Lk Wrthba	11/05/1984	06/04/1990
21FLA 28010791	Icw at Sr800 Bridge, Lk. Wrth Ba	11/05/1984	06/04/1990
21FLA 28010792	Icw at Camino Real, Lk. Wrth Bas	11/05/1984	06/04/1990
21FLA 28010803	C-51 Canal at Southern Blvd And Forest Hill Blv	11/27/1989	05/02/1990
21FLA 28010808	M Canal On Royal Palm Beach Blvd, North Of Rpb	10/23/1985	08/06/1986
21FLA 28010809	Lake Clark at Pine Tree Lane	10/23/1985	08/06/1986
21FLA 28010812	West Palm Beach Canal, 4 Mi E Of 20 Mi Bend	04/11/1989	04/11/1989
21FLA 28010894	West Palm Beach Canal at Forest Hill Blvd	10/23/1985	08/06/1986
21FLA 28010896	Clear Lake at Okeechobee Rd	10/23/1985	08/06/1986
21FLA 28010898	L-8 Canal 1.7 Miles East Of Sr76	11/18/1986	08/11/1987
21FLA 28010899	Wpb Canal 5.2 Miles SE Us98/Us441 Intersection	11/18/1986	08/11/1987
21FLA 28010906	Ocean Canal 3.3 Miles W Of Us98/Us441	11/18/1986	08/11/1987
21FLA 28011028	C 18 J SW Fork Control Structure	04/26/1971	04/26/1971
21FLA 28011030	Loxahatchee Alt A1a Br	04/26/1971	04/26/1971
21FLA 28011032	Sw Fk Lox @Sr706	04/16/1971	04/26/1971
21FLA 28013001	W Palm Bch C 200 Ft W Fec Rr Tra	08/26/1974	07/07/1980
21FLA 28030612	Icw Hillsboro Brg Deerfield Bch.	01/25/1977	09/30/1986
21FLA 28030619	Hillsboro River at Icw Marker 68	03/25/1986	09/30/1986
21FLA NOFORKLOX	North Fk Loxahatchee River Ref Bio Station	08/20/1992	08/20/1992
21FLA NWFORKLOX	Nw Fork Of Loxahatchee River Bio Ref Station	08/20/1992	08/20/1992
21FLBROW1	Federal Highway (Us 1) - Hillsboro Canal	11/17/1980	07/24/2002
21FLBROW1A	Hillsboro Canal at Icw	10/16/1972	09/03/1980
21FLBROW1B	Hillsboro Canal at Us1	01/09/1973	09/03/1980
21FLBROW1C	Hillsboro Canal at Dixie Highway	03/05/1973	09/03/1980
21FLBROW2	Salinity Control Structure - Hillsboro Canal	01/09/1989	07/24/2002
21FLBROW33	Hillsboro Blvd Bridge Over Icw	11/17/1980	07/25/2002
21FLBROW34	Icw at Hillsboro Inlet	11/17/1980	10/27/1998
21FLDOH PALM BEACH207	Dubois Park	07/31/2000	09/23/2002
21FLDOH PALM BEACH214	Peanut Island	07/31/2000	09/23/2002
21FLDOH PALM BEACH327	Phil Foster Park	07/31/2000	09/23/2002
21FLGFWF03090202-OP-01	Okeehlee Station 1	05/16/1996	05/01/2000
21FLGFWFGFCER0137	Okeehlee West Shore	03/26/1984	05/16/1996
21FLKWATLOXAHATCHEER721		07/19/2001	11/08/2001
21FLKWATWORTH1	Worth Lake in Palm Beach Co.-See Note	12/11/1993	02/25/1995
21FLKWATWORTH2	Worth Lake in Palm Beach Co.-See Note	12/11/1993	02/25/1995
21FLKWATWORTH3	Worth Lake in Palm Beach Co.-See Note	12/11/1993	02/25/1995
21FLLOX 10	Jupiter Inlet 50yds N Offshore Dubois Park	11/16/1977	11/04/1999
21FLLOX 100	Nw Fork at Confluence With Cypress Creek	07/08/1992	11/10/1999

Station	Station Name	First Date	Last Date
21FLLOX 101	Jd Park Jenkins Canal North Bridge	01/24/1994	11/18/1998
21FLLOX 102	Jd Park NW Wetlands North Station	01/24/1994	11/18/1998
21FLLOX 103	Jd Park NW Wetlands South Station	01/24/1994	05/07/1996
21FLLOX 104	Hobe Grove Canal at Jd Park West Boundry	01/24/1994	11/10/1999
21FLLOX 105	Cypress Creek Grove Ditch W Of Turnpike	07/10/1991	11/10/1999
21FLLOX 106	Jd Park Kitchen Creek at End Of Nature Walk	01/17/1995	11/04/1999
21FLLOX 107	Rivers Edge Culvert Leading to NW Fork Lox. Riv	09/15/1994	11/10/1999
21FLLOX 109	North Kitching Creek Bridge in Jd Park	05/20/1998	11/04/1999
21FLLOX 20	Intracoastal Waterway Under Sr 707 Bridge	11/16/1977	11/04/1999
21FLLOX 25	Seagrass Bed West Of Icww Channel Marker 44	02/10/1992	11/04/1999
21FLLOX 30	Intracoastal Waterway Under Sr 706 Bridge	11/16/1977	11/04/1999
21FLLOX 35	Sandbar off NE Side Of Don Ross Rd Icww Bridge	02/12/1992	11/04/1999
21FLLOX 40	Central Embayment 100yds W Of Rr Drawbridge	08/13/1992	11/04/1999
21FLLOX 41	Central Embay W Of Mang Isle 1/2m W Of Rr Bridge	11/16/1977	01/25/1994
21FLLOX 51	N Fork Lox River Under Tequesta Dr Bridge	11/16/1977	11/03/1999
21FLLOX 55	N Fork Lox River Under County Line Rd Bridge	11/16/1977	11/03/1999
21FLLOX 57	N Fork in Jd Park off Entrance Road	02/03/1993	11/04/1999
21FLLOX 58	N Fork Loxahatchee River at N Jd Park Boundary	11/18/1997	11/04/1999
21FLLOX 59	N Fork Loxahatchee River at Bridge Rd Hobe Sound	11/18/1997	11/18/1998
21FLLOX 60	Nw Fork 1st Sandbar From NW Shore to Chan Bouy	03/24/1994	11/10/1999
21FLLOX 62	Northwest Fork Under Island Way Bridge	11/16/1977	11/10/1999
21FLLOX 63	Nw Fork off Osprey Nest Upst Of Jd Boat Ramp	07/12/1991	11/10/1999
21FLLOX 64	Nw Loxahatchee River at Jd Park Swim Area	11/16/1977	11/10/1999
21FLLOX 65	Nw Fork 1/4 M Upstream Of Kitchen Creek	07/12/1991	11/10/1999
21FLLOX 66	Nw Fork at Hobe Grove Ditch Marsh Entrance	07/12/1991	11/10/1999
21FLLOX 67	Northwest Fork at Trapper Nelsons Boat Dock	11/16/1977	11/10/1999
21FLLOX 68	Loxahatchee River at I95 Bridge	07/10/1991	11/10/1999
21FLLOX 69	Loxahatchee River at Indiantown Rd Bridge	11/15/1977	11/10/1999
21FLLOX 71	Sw Fork Jones Creek Under Center St Bridge	01/30/1979	11/03/1999
21FLLOX 72	Lox River Rd Bridge Where C-18 Enters SW Fork	11/16/1977	11/03/1999
21FLLOX 73	Sw Fork Sims Creek Under Center St Bridge	07/11/1991	11/03/1999
21FLLOX 74	Sims Creek at State Road 706	11/15/1977	10/26/1978
21FLLOX 75	Jones Creek at State Road 706	11/15/1977	10/26/1978
21FLLOX 81	C18 Canal at Indiantown Rd Bridge	11/15/1977	11/10/1999
21FLLOX 90	L-3 Canal South Of It Rd. at Jupiter Farms Rd.	11/15/1977	11/15/1977
21FLLOX 92	C14 Downstream Of G92	03/23/1994	11/10/1999
21FLLOX 95	1st Canal S Of Itr On Jupiter Farms Road	11/15/1977	11/10/1999
21FLLOX B21	Seagrass Bed East Of Icww Channel Marker 59	02/26/1992	10/13/1998
21FLLOX B25	Seagrass Bed West Of Icww Channel Marker 44	02/26/1992	10/13/1998
21FLLOX B35	Sandbar off NE Side Of Don Ross Rd Icww Bridge	02/26/1992	10/06/1998
21FLLOX B41	Central Embay W Of Mang Isle 1/2m W Of Rr Bridge	03/31/1993	10/06/1998
21FLLOX B54	Mudflat S Of Oyster Bars 1/4m S Of County Line	02/24/1992	10/13/1998
21FLLOX B60	Nw Fork 1st Sandbar From NW Shore to Chan Bouy	02/24/1992	10/13/1998
21FLLOX B62.5	Nw Fork E Tip Mang Isle Upst Isles Of Jupiter	02/24/1992	10/13/1998
21FLLOX B67	Northwest Fork at Trapper Nelsons Boat Dock	03/05/1998	03/05/1998
21FLLOX B69	Loxahatchee River at Indiantown Rd Bridge	03/04/1998	03/04/1998
21FLLOX B70	Sw Fork 500 Yds off Pelican Point	02/24/1992	10/13/1998
21FLLOX LRECD 10	Jupiter Inlet 50yds N Offshore Dubois Park	05/28/1980	10/25/1991

Station	Station Name	First Date	Last Date
21FLLOX LRECD 20	Intracoastal Waterway Under Sr 707 Bridge	05/28/1980	10/25/1991
21FLLOX LRECD 30	Intracoastal Waterway Under Sr 706 Bridge	05/28/1980	10/25/1991
21FLLOX LRECD 51	N Fork Lox River Under Tequesta Dr Bridge	05/28/1980	10/23/1991
21FLLOX LRECD 55	N Fork Lox River Under County Line Rd Bridge	05/28/1980	10/23/1991
21FLLOX LRECD 62	Northwest Fork Under Island Way Bridge	05/28/1980	10/25/1991
21FLLOX LRECD 69	Loxahatchee River at Indiantown Rd Bridge	05/28/1980	10/18/1991
21FLLOX LRECD 71	Sw Fork Jones Creek Under Center St Bridge	05/28/1980	10/23/1991
21FLLOX LRECD 81	C18 Canal at Indiantown Rd Bridge	05/28/1980	10/18/1991
21FLLWDD4	E-2 at Pioneer Road	01/10/1989	11/11/1992
21FLLWDD7	L-30 at Shop Area	01/21/1986	11/11/1992
21FLLWDD8	L-30 at El Clair Road Bridge	01/21/1986	11/11/1992
21FLPBCH1	Nw Fk Loxahatchee R nr Brg Islwa	09/15/1975	11/18/1992
21FLPBCH10	Little Lake Worth at Pga Blvd Br	09/15/1975	11/02/1999
21FLPBCH11	Icw at US 1 Bridge	09/15/1975	03/21/2002
21FLPBCH12	Canal C-17 at Alt A1a Bridge	09/15/1975	09/18/2001
21FLPBCH13	Earman River at US 1 Bridge	09/15/1975	03/21/2002
21FLPBCH14	Lake Worth at Blue Heron Blvd Br	09/15/1975	03/21/2002
21FLPBCH15	Canal C-18 at Sr710 Bridge	09/15/1975	03/18/2002
21FLPBCH16	C-18 (Hungerland Slough) at Sr 7	09/15/1975	03/18/2002
21FLPBCH17	M Canal at Sr 809 Bridge	09/15/1975	06/10/1991
21FLPBCH17A	Flagler Bridge And Icw	03/18/1986	11/02/1999
21FLPBCH18A	Lake Worth at Southern Blvd Brdge	01/28/1980	03/21/2002
21FLPBCH19	Wp Beach Canal at Summit Blvd Br	08/28/1989	11/04/1999
21FLPBCH2	Loxahatchee R at Tequesta-At Teq	09/15/1975	11/04/1992
21FLPBCH20	Wp Canal at Dixie Highway Bridge	09/15/1975	09/19/2001
21FLPBCH25	Canal L-17 at Lantana at Sr 807	08/29/1989	11/09/1999
21FLPBCH28	Canal C-16 at Boynton Beh at Us1	09/15/1975	02/07/1995
21FLPBCH28A	Icw at Ocean Ave, Boynton	01/28/1980	03/21/2002
21FLPBCH3	Loxahatchee River at Old Dixie	09/15/1975	11/26/1979
21FLPBCH31A	Icww And Sr 806 Delray	03/17/1986	11/03/1999
21FLPBCH32	Canal E-4 at Boca Raton	08/28/1989	11/15/1999
21FLPBCH32A	Icw at Palmetto Park, Boca	01/28/1980	11/03/1999
21FLPBCH33	Canal E-4 at Boca Raton	08/28/1989	11/03/1999
21FLPBCH34	Hillsboro Canal nr Boca Raton	08/28/1989	11/03/1999
21FLPBCH36	Canal E-3 nr W. Palm Bch at Sr 8	08/28/1989	11/04/1999
21FLPBCH37	Canal E-1 nr Royal Palm Beach	08/28/1989	11/04/1999
21FLPBCH37A	M-1 Canal North Of Sr 80 And Control Structure	08/28/1989	11/04/1999
21FLPBCH38	Wp Canal (C-51) nr Royal Palm Bc	08/28/1989	11/04/1999
21FLPBCH38A	West Palm Beach Canal, 4 Mi E Of 20 Mi Bend	08/28/1989	11/04/1999
21FLPBCH38B	West Palm Beach Canal, 1 Mi E Of 20 Mi Bend	08/28/1989	03/18/2002
21FLPBCH3A	C-18 Canal, Loxahatchee River Ro	07/30/1979	03/21/1994
21FLPBCH4	Loxahatchee River at Us1 Bridge	09/15/1975	04/11/1977
21FLPBCH43	West Palm Bch Cl at Us441 Bridge	09/15/1975	02/06/1995
21FLPBCH5	Icw at Sr 707 Bridge	09/15/1975	11/04/1992
21FLPBCH6	Intracoastal Wwy at Jupiter-Sr70	09/15/1975	11/18/1992
21FLPBCH7	Canal C-18 at Indiantown Rdbridg	09/15/1975	09/18/2001
21FLPBCH7A	Nw Fork Creek at Indiantown Road	07/30/1979	11/01/1999
21FLPBCH7B	Jupiter Farms And No-1 Canal, S	03/18/1986	11/01/1999

Station	Station Name	First Date	Last Date
21FLPBCH8	Intracoastal Wwy nr Juno Beach	09/15/1975	05/08/1995
21FLPBCH9	Icww at Pga Bridge, Riviera Beach	09/15/1975	11/26/1979
21FLSFWM28012001	Irl Martin Co. Channel Marker #60	10/24/1988	09/12/1989
21FLSFWM28012002	Irl Martin Co. Channel Marker #52	10/24/1988	09/12/1989
21FLSFWM28012003	Irl Martin Co. Channel Marker #48	10/24/1988	09/12/1989
21FLSFWM28012004	Irl Between Cm.#42 & 44 Dnr Transect	10/24/1988	09/12/1989
21FLSFWM28012005	Irl Martin Co. at Cm.#41 Dnr Transect	10/24/1988	09/12/1989
21FLSFWMAG-DTH	Ag Dtich-Collection at Recording Gauge	02/01/1984	09/23/1986
21FLSFWMB-DAM	R-Dam - Collection Before Dam near Center Of	12/28/1982	10/22/1986
21FLSFWMC15S40	Upstream Of S40 On C-15 About 400 Feet Of US W	01/19/1979	02/19/2003
21FLSFWMC16S41	Upstream Of S41 On C-16 160 Feet East Of US H Y	01/19/1979	02/19/2003
21FLSFWMC17S44	Upstream Of S44 On C-17 About 430 Feet Southe S	01/19/1979	02/19/2003
21FLSFWMC17SR702	At C-17 Where It Passes Under Sr 702	01/19/1979	06/24/1996
21FLSFWMC181.9	On C-18 About 1.9 Miles Southwest Of Turnpike A	01/19/1979	08/17/1988
21FLSFWMC18G92	Upstream Of G92 On C-18 About 2.2 Miles South E	02/11/1982	02/19/2003
21FLSFWMC18S46	Upstream Of S46 On C-18 About 220 Ft North Of S	01/19/1979	02/19/2003
21FLSFWMC18SR710	At The Point Where C-18 Passes Under Sr710	01/19/1979	06/24/1996
21FLSFWMC51S155	Upstream Of S155 On C-51 near Lake Worth	01/19/1979	02/19/2003
21FLSFWMC51SR7	State Road 7 Bridge Over West Palm Beach Cana	07/30/1997	07/19/2001
21FLSFWMCA1-39.0	In Rim Cnal at Mile Marker 39 Wca1	10/26/1978	12/28/1982
21FLSFWMCLV10A	1000 Yds. Offshore Of Structure Culvert 10a	01/12/1998	01/22/2003
21FLSFWMCOMPIN	Composite Of Inflow For All 12 Tanks	03/05/1999	04/22/1999
21FLSFWMCULV10A	Intersection Levee-8 And U.S.Hwy.441 at Sand Cut	05/04/1982	03/10/2003
21FLSFWMCYP-CK	Cypress Creek - Collection From Bridge in The Ce	04/17/1985	08/15/1989
21FLSFWMENCON	Encon - Collection in Front Of Weir	12/28/1982	10/22/1986
21FLSFWMENR001	Stage at North End Of Supply Canal to Enr Projec	12/16/1993	07/20/1999
21FLSFWMF2S06-A	1.29 Km West Of L-7 Knights Farm Field 2	08/30/1989	06/27/1990
21FLSFWMF2S06-C	1.29 Km West Of L-7 Knights Farm Field 2	08/09/1989	06/27/1990
21FLSFWMF2S06-D	1.29 Km West Of L-7 Knights Farm Field 2	08/09/1989	06/27/1990
21FLSFWMF2S06-E	1.29 Km West Of L-7 Knights Farm Field 2	08/09/1989	06/27/1990
21FLSFWMF2S07-A	1.81 Km West Of L-7 Knights Farm Field 2	08/30/1989	06/27/1990
21FLSFWMF2S07-B	1.81 Km West Of Knights Farm Field 2	08/09/1989	06/27/1990
21FLSFWMF2S07-D	1.81 Km West Of L-7 Knights Farm Field 2	08/09/1989	06/27/1990
21FLSFWMF2S07-E	1.81 Km West Of L-7 Knights Farm Field 2	08/09/1989	06/27/1990
21FLSFWMF2S08-A	1.74 Km West Of L-7 Knights Farm Field 2	08/30/1989	06/27/1990
21FLSFWMF2S08-B	1.74 Km West Of L-7 Knights Farm Field 2	08/09/1989	06/27/1990
21FLSFWMF2S08-C	1.74 Km West Of L-7 Knights Farm Field 2	08/09/1989	06/27/1990
21FLSFWMF2S08-D	1.74 Km West Of L-7 Knights Farm Field 2	08/09/1989	06/27/1990
21FLSFWMF2S08-E	1.74 Km West Of L-7 Knights Farm Field 2	08/09/1989	06/27/1990
21FLSFWMF2S09-A	2.36 Km West Of L-7 Knights Farm Field 2	08/30/1989	06/27/1990
21FLSFWMF2S09-B	2.36 Km West Of L-7 Knights Farm Field 2	08/09/1989	06/27/1990
21FLSFWMF2S09-C	2.36 Km West Of L-7 Knights Farm Field 2	08/09/1989	06/27/1990
21FLSFWMF2S09-D	2.36 Km West Of L-7 Knights Farm Field 2	08/09/1989	06/27/1990
21FLSFWMF2S09-E	2.36 Km West Of L-7 Knights Farm Field 2	08/09/1989	06/27/1990
21FLSFWMF2S10-A	2.55 Km West Of L-7 Knights Farm Field 2	08/30/1989	06/27/1990
21FLSFWMF2S10-B	2.55 Km West Of L-7 Knights Farm Field 2	08/09/1989	06/27/1990
21FLSFWMF2S10-C	2.55 Km West Of L-7 Knights Farm Field 2	08/09/1989	06/27/1990
21FLSFWMF2S10-D	2.55 Km West Of L-7 Knights Farm Field 2.	08/09/1989	06/27/1990

Station	Station Name	First Date	Last Date
21FLSFWMF2S10-E	2.55 Km West Of L-7 Knights Farm Field 2	08/09/1989	06/27/1990
21FLSFWMFS207-C	1.81 Km West Of L-7 Knights Farm Field 2	09/12/1989	09/12/1989
21FLSFWMG-92	C-18 Canal near Jupiter Farms - Collection at Ca	12/28/1982	08/15/1989
21FLSFWMG255	Water Quality at G255 Culverts From Buffer Cell To	06/07/1994	03/17/2003
21FLSFWMG259	Cell 3 Collection Canal	10/17/2001	10/24/2001
21FLSFWMG305G	Cell 5 Interior Culvert	01/26/2000	03/18/2003
21FLSFWMG305N	Cell 5 Interior Culvert	01/26/2000	03/18/2003
21FLSFWMG306D	4th. Northern Most Outflow Structure Cell5, Sta1w	05/04/1999	02/20/2003
21FLSFWMG306G	7th Northern Most Outflow Structure Cell5, Sta1w	05/04/1999	03/19/2003
21FLSFWMG327A	Cell 5 Outflow Collection Canal South	01/26/2000	03/17/2003
21FLSFWMGLM0	Mesocosm Tank #0	03/11/1996	04/16/2002
21FLSFWMGLM1	Mesocosm Tank #1	03/11/1996	04/16/2002
21FLSFWMGLM2	Mesocosm Tank #2	03/11/1996	04/16/2002
21FLSFWMGLM3	Mesocosm Tank #3	03/11/1996	04/16/2002
21FLSFWMGLM4	Mesocosm Tank #4	03/11/1996	04/16/2002
21FLSFWMGLM5	Mesocosm Tank #5	03/11/1996	04/16/2002
21FLSFWMGLM6	Mesocosm Tank #6	03/11/1996	04/16/2002
21FLSFWMGLM7	Mesocosm Tank #7	03/11/1996	04/16/2002
21FLSFWMGLM8	Mesocosm Tank #8	03/11/1996	04/16/2002
21FLSFWMGLM9	Mesocosm Tank #9	03/11/1996	04/16/2002
21FLSFWMHGS5	Lake Okeechobee Pahokee	04/09/1973	05/08/1990
21FLSFWMHOBE-DTH	Hobe Ditch - Collection From Recording Gauge Pla	12/28/1982	08/15/1989
21FLSFWMIRL01	0.6 Miles North Of Jupiter Inlet in Icw at Mark	10/08/1990	07/12/1999
21FLSFWMIRL02	North Of Jupiter Inlet in Icw at Marker #52	10/08/1990	04/07/2003
21FLSFWMIRL03	North Of Jupiter Inlet in Icw at Marker #48	10/08/1990	07/12/1999
21FLSFWMIRL04	Martin County in Icw 1/2 Way Between Marker #42	10/08/1990	04/07/2003
21FLSFWMIRL05	Martin County in Icw at Marker #41	10/08/1990	07/12/1999
21FLSFWMJF-1	Jupiter Farms 1-Collection at First Bridge Jf	12/28/1982	11/04/1987
21FLSFWMJF-3	Jupiter Farms 3- Collection at Randolphinsiding An	06/29/1984	10/21/1986
21FLSFWMJF-7	Jupiter Farms #7-Collection at End Of Jupiter F	04/11/1984	11/04/1987
21FLSFWMKITCHEN	Kitching Creek - Collection at Gauge Bridge Ce	02/01/1984	11/06/1989
21FLSFWML10DS	Big Mound Bridge Over Wpb. Canal 10.05 Miles Nw.	12/18/1995	12/21/1995
21FLSFWML10MID	In Wpb. Canal 10.25 Miles Nw. Of S5a	12/18/1995	12/21/1995
21FLSFWML10US	In Wpb. Canal 10.4 Miles Nw. Of S5a	12/18/1995	12/21/1995
21FLSFWML8-06.0T	Indian Trail Water Control Dist. 6 Miles Upst E	06/15/1983	11/05/1987
21FLSFWML8-08.5T	Indian Trail Ranch 8.5 Miles Upstream Of S5as	06/15/1983	11/05/1987
21FLSFWML8-10.7T	Indian Trail Water Control Dist. 10.7 Miles U S	06/15/1983	11/05/1987
21FLSFWML8-12.5T	Corbett Area Canal On NE Side Of L8 12.5 Mile U	06/15/1983	11/05/1987
21FLSFWML8-13.4T	Corbett Area Discharge Canal On NE Side Of L8 13.4	06/15/1983	06/15/1983
21FLSFWML8-14.8T	Corbett Area Marsh Overflow Culvert On NE Side O	06/15/1983	06/15/1983
21FLSFWML8-15.5	Mid-Canal Station 15.5 Miles Upstream Of S5as A	08/26/1983	11/05/1987
21FLSFWML8-17.7T	White Belt Dairy Culvert 17.7 Miles Upstream F	06/15/1983	11/05/1987
21FLSFWML8-20.0T	White Belt Dairy Culvert On NE Side Of L8 20.0 Mil	06/15/1983	06/15/1983
21FLSFWML8-21.3T	White Belt Dairy Culvert On NE Side Of L8 21.3 Mil	06/15/1983	06/15/1983
21FLSFWML8-22.7T	Break in Levee Discharge On North Side Of L8.22.	06/15/1983	06/15/1983
21FLSFWML8-23.3T	Small Pump On North Side Of L8 Canal-Half Mil W	06/15/1983	10/14/1987
21FLSFWML8-24.2T	Bourne Pump No.4 On West Side Of L8 24.2 Mile	08/26/1983	11/05/1987
21FLSFWML8-C10A	Us Hwy 98 Bridge Over L8 Canal 200 Feet West	01/18/1991	07/07/1991

Station	Station Name	First Date	Last Date
21FLSFWML823.3TN	Private Pump Station On North Side Of L8 Canal	01/18/1991	02/06/1992
21FLSFWML823.8TN	Private Pump Station On North Side Of L8 Canal	01/18/1991	02/27/1992
21FLSFWML823.9TN	Private Pump Station On North Side Of L8 Canal	01/18/1991	04/09/1991
21FLSFWML824.2TN	Private Pump Station On North Side Of L8 Canal	01/18/1991	05/22/1991
21FLSFWML824.6TS	Private Pump Station On South Side Of L8 Canal	01/20/1991	02/27/1992
21FLSFWML8S76	Wmd Spillway Structure 76 On L8 Canal 22.8 Mile	01/18/1991	07/16/1991
21FLSFWMLOG-ROAD	Old Loggin Road - Collection From Logs in The Ce	01/08/1985	10/22/1986
21FLSFWMM204-SW	Surface Water Grab	09/24/1997	06/17/1998
21FLSFWMMDON-1	Enr Supply Canal 50 Meters South Of Intersction	09/30/1998	09/30/1998
21FLSFWMOC00.6TS	Private Pump Station On South Side Of Ocean Can	09/25/1990	02/06/1992
21FLSFWMOC006TS	Multiple Pump - Fixed Variable Speed 28500 GPM	02/28/1994	04/28/1998
21FLSFWMOC01.1TS	Private Pump Station On South Side Of Ocean Can	09/29/1990	05/21/1991
21FLSFWMOC01.3TS	Private Pump Station On South Side Of Ocean Can	01/24/1990	05/27/1991
21FLSFWMOC011TS	Single Pump - Fixed Variable Speed 25000 GPM	03/31/1996	03/31/1996
21FLSFWMOC013TS	Single Pump - Fixed Variable Speed 14000 GPM	02/28/1994	03/31/1996
21FLSFWMOC02.0TN	Private Pump Station On North Side Of Ocean Can	01/17/1991	02/06/1992
21FLSFWMOC02.6TS	Private Pump Station On South Side Of Ocean Can	01/17/1991	02/06/1992
21FLSFWMOC020TN	Multiple Pump - Fixed Variable Speed 29000 GPM	05/05/1994	07/19/2000
21FLSFWMOC026TS	Multiple Pump - Fixed Variable Speed 50000 GPM	02/28/1994	04/28/1998
21FLSFWMOC030TN	Agricultural Discharge Location	05/28/1996	07/19/2000
21FLSFWMOC04.1TS	Canal Inflow On South Side Of Ocean Canal 4.	09/25/1990	02/27/1992
21FLSFWMOC04.5TN	Private Pump Station On North Side Of Ocean Can	10/10/1990	02/06/1992
21FLSFWMOC041TS	Canal - Open Channel	03/28/1994	05/30/1997
21FLSFWMOC041TS1	Multiple Pump - Fied Variable Speed 50000 GPM	08/04/1994	09/04/1998
21FLSFWMOC041TS2	No Description Available For This Station	08/04/1994	09/04/1998
21FLSFWMOC041TS5	Single Pump - Fixed Variable Speed 25000 GPM	02/28/1994	04/30/1998
21FLSFWMOC041TS6	No Description Available For This Station	05/26/1994	04/30/1998
21FLSFWMOC045TN	Multiple Pump - Fixed Variable Speed 85000 GPM	02/28/1994	05/01/1998
21FLSFWMOC06.0TN	Temporary Private Pump On North Side Of ocean Can	09/29/1990	04/07/1991
21FLSFWMOC06.6TN	Gravity Fed Culvert On North Side Of Ocean Can	09/29/1990	04/05/1991
21FLSFWMOC066TN1	Multiple Pump - Fixed Variable Speed 82500 GPM	06/10/1994	08/19/1998
21FLSFWMOC07.6TS	Private Pump Station On South Side Of Ocean Can	09/25/1990	02/27/1992
21FLSFWMOC076TS	Multiple Pump - Fixed Variable Speed 14000 GPM	02/28/1994	08/22/1998
21FLSFWMOC087TN	Multiple Pump - Fixed Variable Speed 32000 GPM	06/14/1994	08/20/1998
21FLSFWMOC09.2TN	Private Pump Station On North Side Of Ocean Can	01/24/1991	02/06/1992
21FLSFWMOC095TN3	Single Pump - Fixed Variable Speed 10000 GPM	02/28/1994	08/21/1998
21FLSFWMOC095TN5	Single Pump - Fixed Constant Speed 11000 GPM	04/01/1996	08/21/1998
21FLSFWMOC095TN6	Single Pump - Fixed Variable Speed 25000 GPM	02/28/1994	08/22/1998
21FLSFWMOC095TNS	Agricultural Discharge Location	01/28/1998	08/04/1998
21FLSFWMOC096TN	Agricultural Discharge Location	05/25/1996	08/05/1998
21FLSFWMOC10.3TN	Private Pump Station On North Side Of Ocean Can	09/25/1990	06/20/1991
21FLSFWMOC10.3TS	Private Pump Station On South Side Of Ocean Can	01/17/1991	02/27/1992
21FLSFWMOC11.1TN	Private Pump Station On North Side Of Ocean Canal	01/17/1991	01/17/1991
21FLSFWMOC11.8TS	Private Pump Station On South Side Of Ocean Can	10/10/1990	02/06/1992
21FLSFWMOCN-00.0	In The Ocean Canal at Sr 98	07/01/1976	12/02/1976
21FLSFWMOCN-00.4	In Ocean Canal N. Side Of Roth Farm Discharge	06/17/1976	04/11/1977
21FLSFWMOCN-00.5	In Ocean Canal S. Side Of Roth Farm Discharge	06/17/1976	04/11/1977
21FLSFWMOCN-01.1	In Ocean Canal .6 Mi. W. Of Roth Farm Discharge	06/17/1976	04/11/1977

Station	Station Name	First Date	Last Date
21FLSFWMOCN-04.2	In Ocean Canal 4.2 Mi. W. Of 20 Mile Bend	06/01/1976	12/02/1976
21FLSFWMOCN-04.5	In Ocean Canal 4.5 Mi. W. Of 20 Mile Bend	06/01/1976	04/11/1977
21FLSFWMOCN-04.6	In Ocean Canal 4.6 Mi. W. Of 20 Mile Bend	06/01/1976	04/11/1977
21FLSFWMOCN-05.5	In Ocean Canal 5.5 Mi. W. Of 20 Mile Bend	06/17/1976	04/11/1977
21FLSFWMOCN-06.3	In Ocean Canal 6.3 Mi. W. Of 20 Mile Bend	06/17/1976	03/09/1977
21FLSFWMPB-100M	S.W. Site On Canal C51	05/08/1995	06/14/1995
21FLSFWMPB-800M	S.W. Site On Canal C51	05/08/1995	05/08/1995
21FLSFWMRPB-MZL	Royal Palm Beach Wwtp Dual Zone Monitor Well, Open	01/12/2000	01/12/2000
21FLSFWMRPB-MZU	Royal Palm Beach Wwtp Dual Zone Monitor Well, Open	01/12/2000	01/12/2000
21FLSFWMS352	At Intersection Of Hebert Hoover Dike And Wpb C	06/20/1990	04/08/2003
21FLSFWMS352AS	Autosampler East Of S352 On C-51 Canal	11/16/1995	06/01/1998
21FLSFWMS352UP	Upstream Of S352 Spillway (Lakeside) at C51 Can	12/22/1997	10/08/2001
21FLSFWMS5AD	Downstream S5a Northern Most Point Of Wca1 South	12/20/1993	03/10/2003
21FLSFWMS5AE	Western Point Of C-51 Where L-8 Intersects	03/24/1982	03/25/2003
21FLSFWMS5AS	Where Wca1 Intersects L-8 North End Of L-40	07/16/1979	03/25/2003
21FLSFWMS5AW	No Description Available For This Station	01/24/1986	10/21/2002
21FLSFWMSR-706	State Road 706 Bridge Over Loxahatchee River Fro	12/28/1982	08/15/1989
21FLSFWMT12	Second Tank in From West in Project Mdos	02/26/1999	04/22/1999
21FLSFWMT18	Eigth Tank in From West in Project Mdos	02/26/1999	04/22/1999
21FLSFWMT19	Ninth Tank in From West in Project Mdos	02/26/1999	04/22/1999
21FLSFWMT211	Eleventh Tank in From West in Project Mdos	02/26/1999	04/01/1999
21FLSFWMT24	Fourth Tank in From West in Project Mdos	02/26/1999	04/01/1999
21FLSFWMT25	Fifth Tank in From West in Project Mdos	02/26/1999	04/01/1999
21FLSFWMT31	Western Most Tank in Project Mdos	02/26/1999	04/22/1999
21FLSFWMT310	Tenth Tank in From West in Project Mdos	02/26/1999	04/22/1999
21FLSFWMT37	Seventh Tank in From West in Project Mdos	02/26/1999	04/22/1999
21FLSFWMT412	Twelfth Tank in From West in Project Mdos	02/26/1999	04/01/1999
21FLSFWMT43	Third Tank in From West in Project Mdos	02/26/1999	04/01/1999
21FLSFWMT46	Sixth Tank in From West in Project Mdos	02/26/1999	04/01/1999
21FLSFWMTRAN-3	Transect #3 - Collection On East Side Of River	06/29/1984	10/21/1986
21FLSFWMTRAPPERS	Trapper Nelsons - Collection at End Of Dock Cent	12/28/1982	08/15/1989
21FLSFWMTURNPIKE	Turnpike Bridge Over Loxahatchee River in Center	12/28/1982	08/15/1989
21FLSFWMUPICK	Upick Canal - Collection at West End Of canal Bef	03/27/1984	10/22/1986
21FLSFWMVOW3	P&G Gate Site Everglades Stormwater Program, Villa	10/14/1999	02/11/2002
21FLSFWMVOW35	Riser Site Everglades Stormwater Program, Village	10/14/1999	02/11/2002
21FLSFWMVOW4	P & Gate Site Everglades Stormwater Program, Vill	10/14/1999	12/07/2001
21FLSFWMVOW85	R & Gate Monitoring Site Everglades Stormwater Pro	10/14/1999	02/11/2002
21FLSFWMWP00.7TN	Private Pump Station On North Side Of Wpb Canal	09/29/1990	02/27/1992
21FLSFWMWP00.8TN	Private Pump Station On North Side Of Wpb Canal	01/26/1991	02/27/1992
21FLSFWMWP007TN	Multiple Pump - Fixed Variable Speed 43000 GPM	02/28/1994	04/29/1998
21FLSFWMWP03.6TN	Private Pump Station On North Side Of Wpb Canal	10/10/1990	07/07/1991
21FLSFWMWP036TN	Multiple Pump - Fixed Variable Speed 115000 GPM	05/05/1994	07/18/2000
21FLSFWMWP04.5TS	Gravity Fed Culvert On South Side Of Wpb Canal	01/18/1991	04/22/1991
21FLSFWMWP04.8TN	Private Pump Station On North Side Of Wpb Canal	09/29/1990	02/27/1992
21FLSFWMWP041TN1	Agricultural Discharge Location	08/04/1998	08/04/1998
21FLSFWMWP041TN3	Agricultural Discharge Location	09/02/1997	08/04/1998
21FLSFWMWP041TS	Agricultural Discharge Location	07/23/1997	07/23/1997
21FLSFWMWP045TS1	Single Pump - Fixed Variable Speed 25000 GPM	05/05/1994	05/05/1994

Station	Station Name	First Date	Last Date
21FLSFWMWP045TS2	No Description Available For This Station	07/23/1997	08/05/1998
21FLSFWMWP048TN	Multiple Pump - Fixed Variable Speed 71000 GPM	08/09/1994	07/04/2000
21FLSFWMWP06.7TN	Gravity Fed Culvert On North Side Of Wpb Canal	09/29/1990	07/07/1991
21FLSFWMWP067TN1	Multiple Pump - Fixed Variable Speed 16000 GPM	09/11/1994	06/04/1997
21FLSFWMWP067TN3	Agricultural Discharge Location	05/28/1996	05/28/1996
21FLSFWMWP067TN4	Multiple Pump - Fixed Variable Speed 43000 GPM	05/05/1994	08/02/1997
21FLSFWMWP067TN5	Single Pump - Fixed Variable Speed 35000 GPM	03/14/1994	08/04/1998
21FLSFWMWP067TN6	Fpww	03/28/1994	08/04/1998
21FLSFWMWP07.4TS	Private Pump Station On South Side Of Wpb Canal	10/10/1990	02/27/1992
21FLSFWMWP07.5TN	Private Pump Station On North Side Of Wpb Canal	01/18/1991	05/22/1991
21FLSFWMWP074TS	Multiple Pump - Fixed Variable Speed 66000 GPM	02/28/1994	08/22/1998
21FLSFWMWP075TN	Single Pump - Fixed Variable Speed 25000 GPM	08/09/1994	06/18/2002
21FLSFWMWP08.7TS	Private Pump Station On South Side Of Wpb Canal	10/10/1990	02/27/1992
21FLSFWMWP087TS	Multiple Pump - Fixed Variable Speed 44000 GPM	02/28/1994	07/18/1997
21FLSFWMWP09.1TN	Private Pump Station On North Side Of Wpb Canal	08/14/1990	02/27/1992
21FLSFWMWP09.9TS	Private Pump Station On South Side Of Wpb Canal	09/29/1990	02/27/1992
21FLSFWMWP091TN	Multiple Pump - Fixed Variable Speed 215000 GPM	08/09/1994	07/04/2000
21FLSFWMWP099TS	Multiple Pump - Fixed Variable Speed 73000 GPM	05/22/1996	07/18/2000
21FLSFWMWP10.1TN	Gravity Fed Culvert On North Side Of Wpb Canal	01/18/1991	07/07/1991
21FLSFWMWP10.6TS	Private Pump Station On South Side Of Wpb Canal	10/10/1990	02/27/1992
21FLSFWMWP10.8TN	Private Pump Station On North Side Of Wpb Canal	10/10/1990	07/16/1991
21FLSFWMWP101TN	Canal - Open Channel	05/09/1996	08/17/1999
21FLSFWMWP106TS	Multiple Pump - Fixed Variable Speed 62000 GPM	05/23/1994	09/22/1998
21FLSFWMWP108TN	Private Pump	04/29/1997	08/04/1998
21FLSFWMWP12.0TN	Private Pump Station On North Side Of Wpb Canal	01/24/1991	06/25/1991
21FLSFWMWP12.1TS	Private Pump Station On South Side Of Wpb Canal	01/16/1991	07/31/1991
21FLSFWMWP121TS	Multiple Pump - Fixed Variable Speed 270000 GPM	05/18/1994	08/19/1998
21FLSFWMWP128TN	Canal - Open Channel	05/14/1996	07/18/2000
21FLSFWMWP13.7TN	Private Pump Station On North Side Of Wpb Canal	01/16/1991	07/07/1991
21FLSFWMWP137TN	Private Pump	07/22/1997	07/18/2000
21FLSFWMWP14.1TN	Private Pump Station On North Side Of Wpb Canal	01/16/1991	07/07/1991
21FLSFWMWP141TN	Multiple Pump - Fixed Variable Speed 50000 GPM	05/22/1996	07/18/2000
21FLSFWMWP15.3TS	Private Pump Station On South Side Of Wpb Canal	10/10/1990	07/31/1991
21FLSFWMWP15.4TN	Gravity Fed Culvert On North Side Of Wpb Canal	01/16/1991	07/18/1991
21FLSFWMWP153TS	Multiple Pump - Fixed Variable Speed 130000 GPM	06/27/1996	08/22/1998
21FLSFWMWP154TN1	Agricultural Discharge Location	09/09/1997	09/09/1997
21FLSFWMWP154TN2	Multiple Pump - Fixed Variable Speed 180000 GPM	08/09/1994	08/18/1998
21FLSFWMWP154TN3	Single Pump - Fixed Variable Speed 25000 GPM	09/01/1994	07/29/1997
21FLSFWMWP16.0TN	Private Pump Station On North Side Of Wpb Canal	01/16/1991	04/05/1991
21FLSFWMWP16.8TS	Private Pump Station On South Side Of Wpb Canal	01/16/1991	02/06/1992
21FLSFWMWP160TN	Private Pump	07/22/1997	07/18/2000
21FLSFWMWP168TS	Multiple Pump - Fixed Variable Speed 32000 GPM	06/27/1996	08/27/1998
21FLSFWMWP17.9TN	Private Pump Station On North Side Of Wpb Canal	01/16/1991	05/24/1991
21FLSFWMWP179TN	Multiple Pump - Fixed Variable Speed 152000 GPM	08/09/1994	07/04/2000
21FLSFWMWP18.4TS	Private Pump Station On South Side Of Wpb Canal	01/16/1991	07/31/1991
21FLSFWMWP184TS	Multiple Pump - Fixed Variable Speed 90000 GPM	06/27/1996	08/20/1998
21FLSFWMWP19.3TN	Private Pump Station On North Side Of Wpb Canal	01/16/1991	07/31/1991
21FLSFWMWP19.5TS	Private Pump Station On South Side Of Wpb Canal,1	01/16/1991	01/16/1991

Station	Station Name	First Date	Last Date
21FLSFWMWP193TN	Multiple Pump - Fixed Variable Speed 90000 GPM	06/27/1996	08/21/1998
21FLSFWMWPB-25.4	In L-12 Downstream Of New Hope Discharge	06/17/1976	04/11/1977
21FLSFWMWPB-25.5	In L-12 Upstream Of New Hope Discharge	06/17/1976	04/11/1977
21FLSFWMWPB-31.0	In L-12 8.0 Mi. NW Of 20 Mile Bend	07/15/1976	02/09/1977
21FLSFWMWPB-31.4	In L-12 Downstream Of East Div. Discharge	06/01/1976	04/11/1977
21FLSFWMWPB-31.5	In L-12 Upstream Of East Div. Discharge	06/01/1976	04/11/1977
21FLSFWMWPB-33.5	In L-10 at Hatten Brothers Discharge	06/17/1976	04/11/1977
21FLWPB 28010057	N Fork Loxahatchee at Co Ln Rd B	06/14/2001	10/23/2002
21FLWPB 28010135	C-18 Canal at Sr 786 %Pga Blvd<	07/27/1999	09/12/2000
21FLWPB 28010223	North Fk Loxahatchee River Ref Bio Station	10/07/1999	05/09/2002
21FLWPB 28010353	Loxahatchee Mid Estuary@ Green Marker	07/05/2001	07/05/2001
21FLWPB 28010355	Lake Clarke @ Pinetree Lane	06/29/2001	10/16/2002
21FLWPB 28010358	NW Fork Loxahatchee River @ Yacht Club Point	06/14/2001	06/14/2001
21FLWPB 28010359	C18@End Of 154th St.	06/14/2001	10/23/2002
21FLWPB 28010363	C18 @Indiantown Road	06/14/2001	10/23/2002
21FLWPB 28010372	Lake Mangonia@Australian Ave. Park	06/29/2001	03/13/2002
21FLWPB 28010373	Canal Between Lake Mangonia And Clear Lake	06/29/2001	10/16/2002
21FLWPB 28010502	C18	06/03/1999	10/27/1999
21FLWPB 28010530	C51 Canal Group 3 Station 34 H	06/19/2001	06/19/2001
21FLWPB 28010532	M Canal @ Military Trail	03/26/2002	10/16/2002
21FLWPB 28010533	C17 Canal at Congress Ave	03/26/2002	10/16/2002
21FLWPB 28010562	Wellington Arms Test 1	11/04/2002	11/04/2002
21FLWPB 28010563	Wellington Arms Test 2	11/04/2002	11/04/2002
21FLWPB 28010564	Wellington Arms Test 3	11/04/2002	11/04/2002
21FLWPB 28010615	C-18 Canal, Loxahatchee River Ro	06/14/2001	10/23/2002
21FLWPB 28010716	Loxahatchee R at Tequesta-At Teq	06/14/2001	10/23/2002
21FLWPB 28010717	Loxahatchee R at Jupiter Alt Hwy	06/14/2001	10/23/2002
21FLWPB 28010726	Canal C-17 at Alt A1a Bridge	06/14/2001	07/08/2002
21FLWPB 28010896	Clear Lake at Okeechobee Rd	06/29/2001	10/16/2002
21FLWPB 28010899	Wpb Canal 5.2 Miles SE Us98/Us441 Intersection	06/19/2001	10/16/2002
21FLWPB 28030612	Icw Hillsboro Brg Deerfield Bch.	03/26/2002	05/14/2002

Figure 2-5 DBHYDRO Water Quality Stations

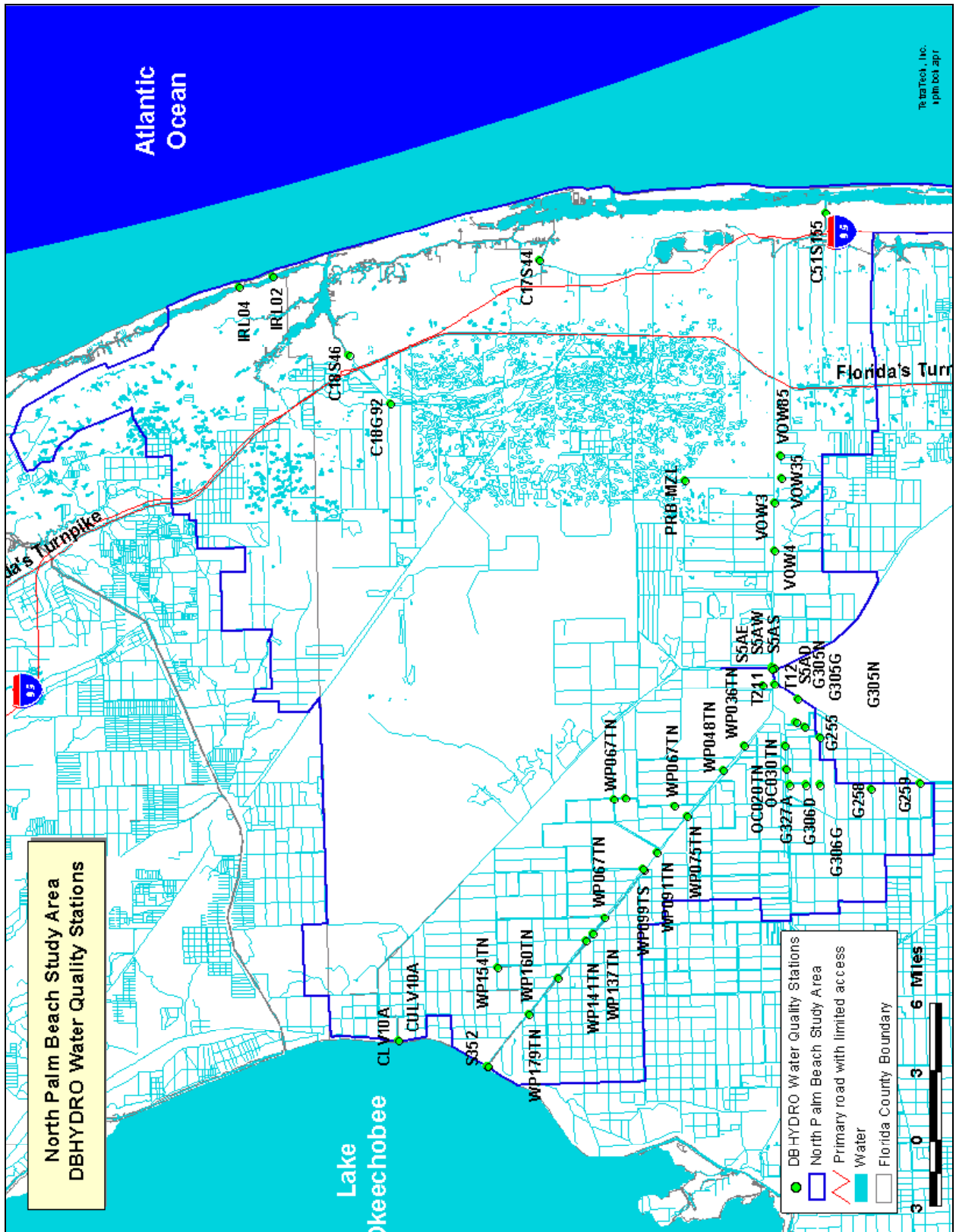
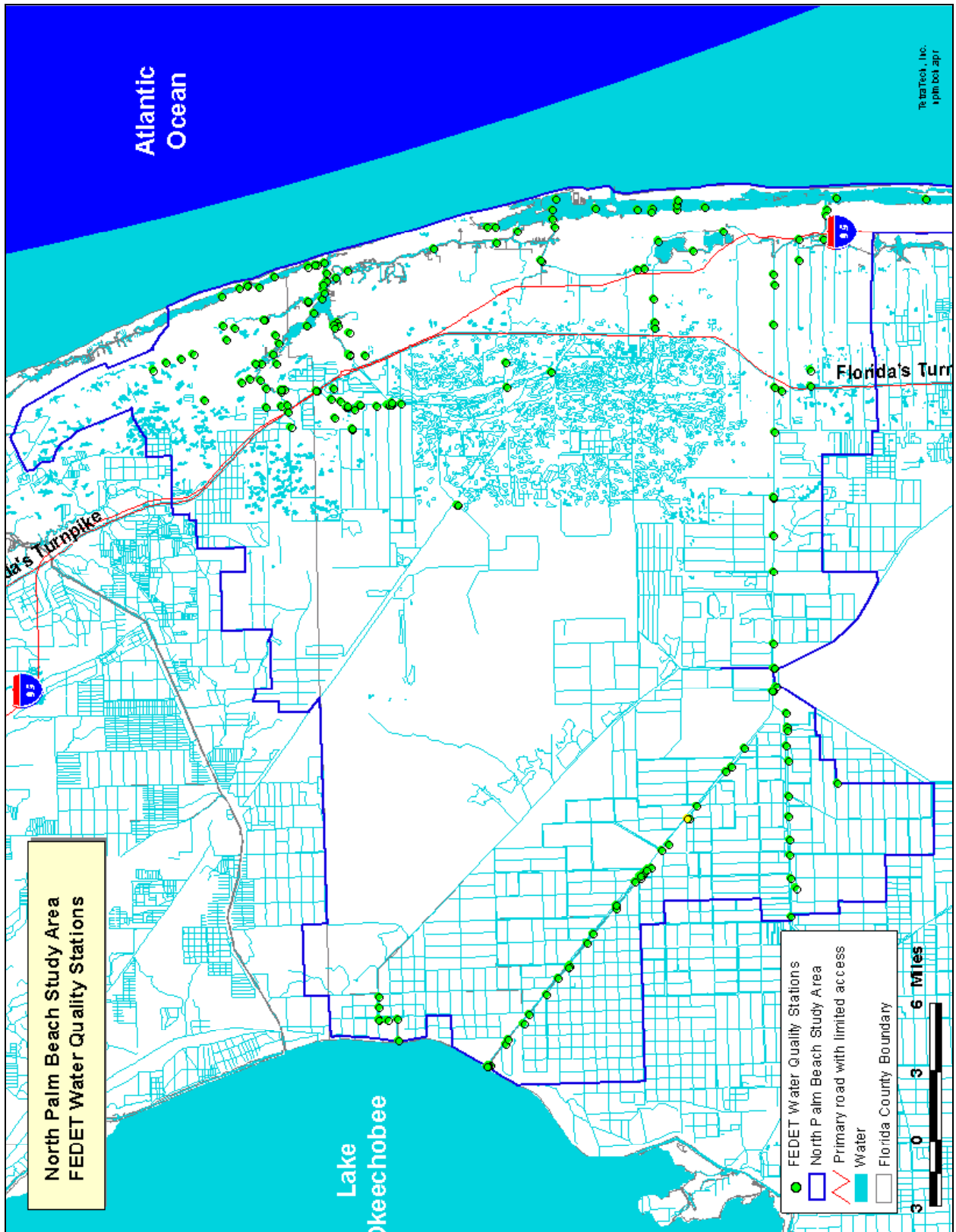


Figure 2-7 FEDET Water Quality Stations



3/20/2010, 10:00 AM

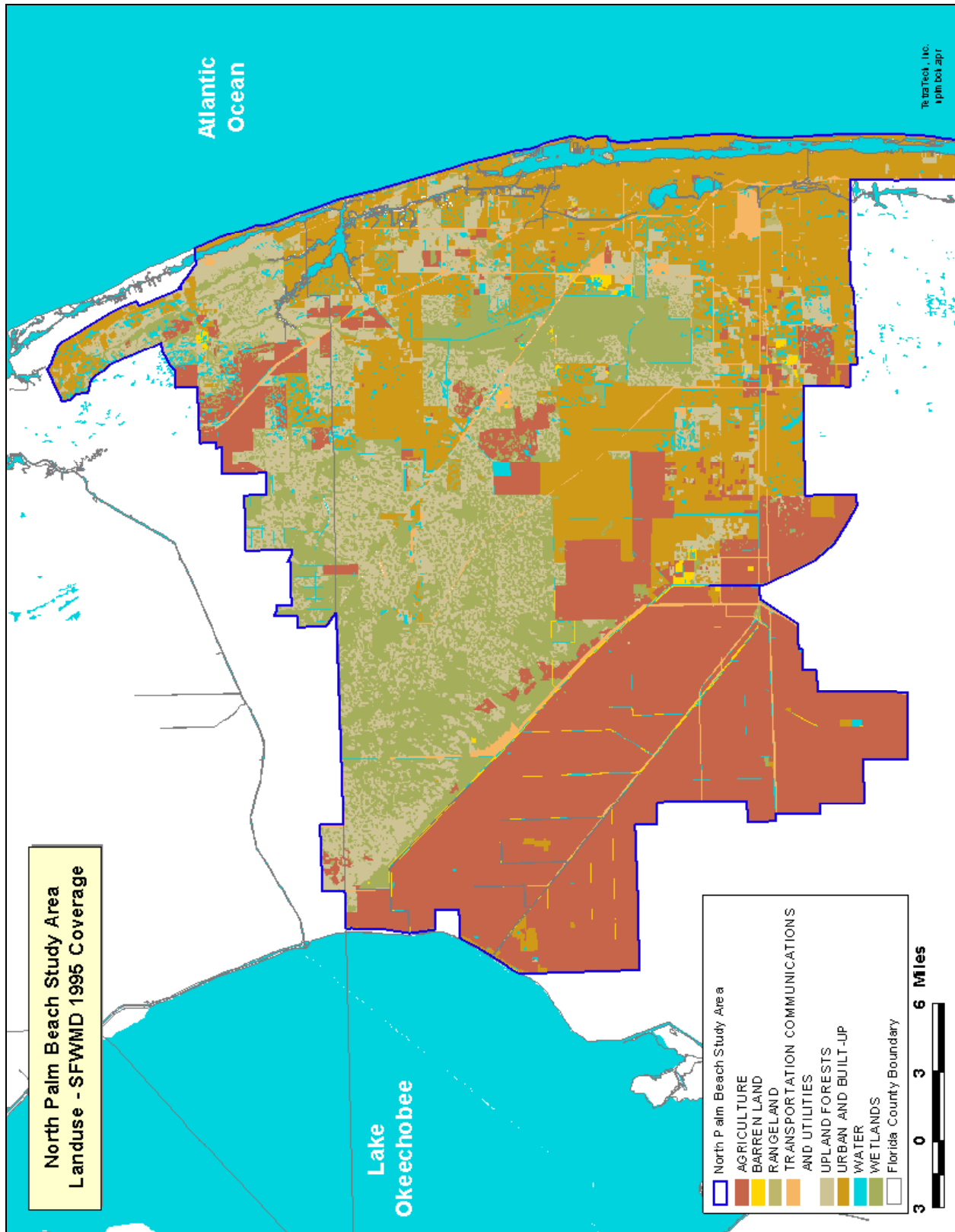
2.6 Land Use

GIS coverages of land use were obtained from the SFWMD for the entire district, in Arcview shapefile format. These coverages were developed using the Florida Land Use, Land Cover Classification System (FLUCCS) to define land use/cover types. The coverage includes land use classifications to FLUCCS level 3. Table 2-8 is provided here to give relative numbers of different types of land use within this study area, with respect to the SFWMD drainage basins. Figure 2-8 then illustrates the land use types within the north Palm Beach study area.

Table 2-8 Comparisons of Land Use Types Within the SFWMD Basins

Primary Basin	Urban/Built and Transportation		Forest/Range/Barren		Agriculture		Water and Wetlands		Totals	
	Acres	%	Acres	%	Acres	%	Acres	%	Acres	%
Basin 2	3763	41.8	2480	27.6	410	4.6	2340	26.0	8993	1.5
C-17	15602	73.6	3200	15.1	319	1.5	2077	9.8	21198	3.5
C-18	11101	16.2	24025	35.0	5409	7.9	28016	40.9	68552	11.2
C-51	67898	62.8	12261	11.3	18043	16.7	9869	9.1	108071	17.6
Intracoastal	90501	84.2	10293	9.6	650	0.6	6037	5.6	107481	17.5
Jonathan Dickinson	6219	16.4	13842	36.6	9222	24.4	8530	22.6	37812	6.2
L-8	7615	8.6	22223	25.0	16834	19.0	42123	47.4	88795	14.5
Loxahatchee River	989	74.7	183	13.8	7	0.5	146	11.0	1325	0.2
Pal Mar	9	0.1	7574	40.7	429	2.3	10598	56.9	18610	3.0
S-5A	3496	2.8	1525	1.2	116833	94.7	1531	1.2	123386	20.1
South Indian River	9400	58.4	3876	24.1	1283	8.0	1543	9.6	16102	2.6
W.P.B. Water	133	1.0	1015	8.0	0	0.0	11541	91.0	12689	2.1
Totals	216726	35.4	102497	16.7	169439	27.6	124351	20.3	613014	

Figure 2-8 Land Use in the North Palm Beach Study Area



2.7 Net Solar Radiation

Net solar radiation data were obtained from the following sources:

- SFWMD DBHYDRO database for all the major SFWMD drainage basins in this study area.

Table 2-9 (DBHYDRO) provides the following metadata for the net solar radiation data:

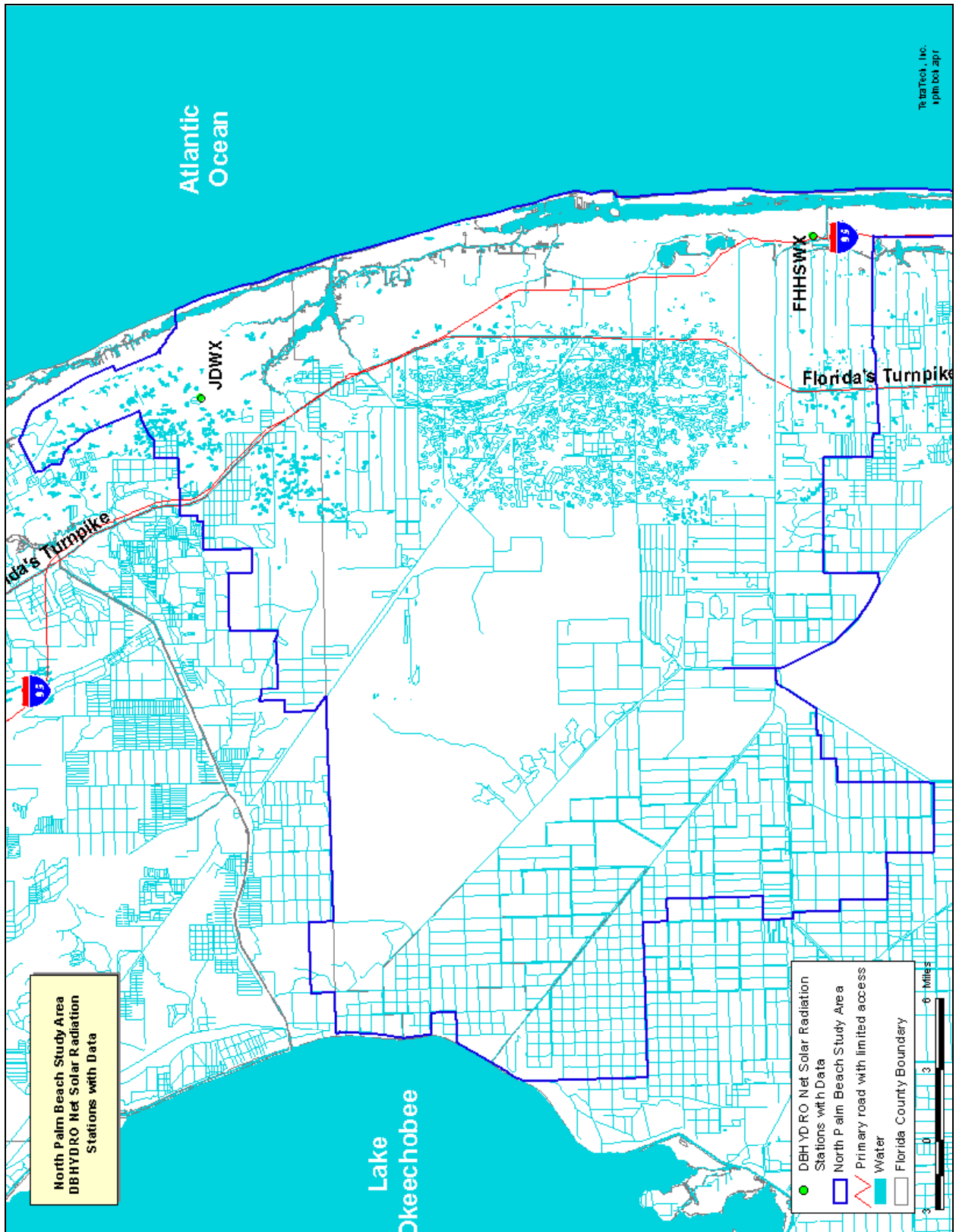
- Station
- Agency
- Start Date
- End Date
- Data Filename

All net solar radiation data are in units of kilowatts per meter squared. Figure 2-9 provides an illustration of the locations of the DBHYDRO net solar radiation stations.

Figure 2-9 Metadata for DBHYDRO Net Solar Radiation Data

Station	Agency	Start Date	End Date	Filename
JDWX	WMD	1997	2003	dbhydro-radn-npb.txt
FHHSWX	WMD	2000	2002	dbhydro-radn-npb.txt

Figure 2-9 DBHYDRO Net Solar Radiation Stations



2.8 Total Radiation

Total radiation data were obtained from the following sources:

- SFWMD DBHYDRO database for all the major SFWMD drainage basins in this study area.

Table 2-10 (DBHYDRO) provides the following metadata for the total radiation data:

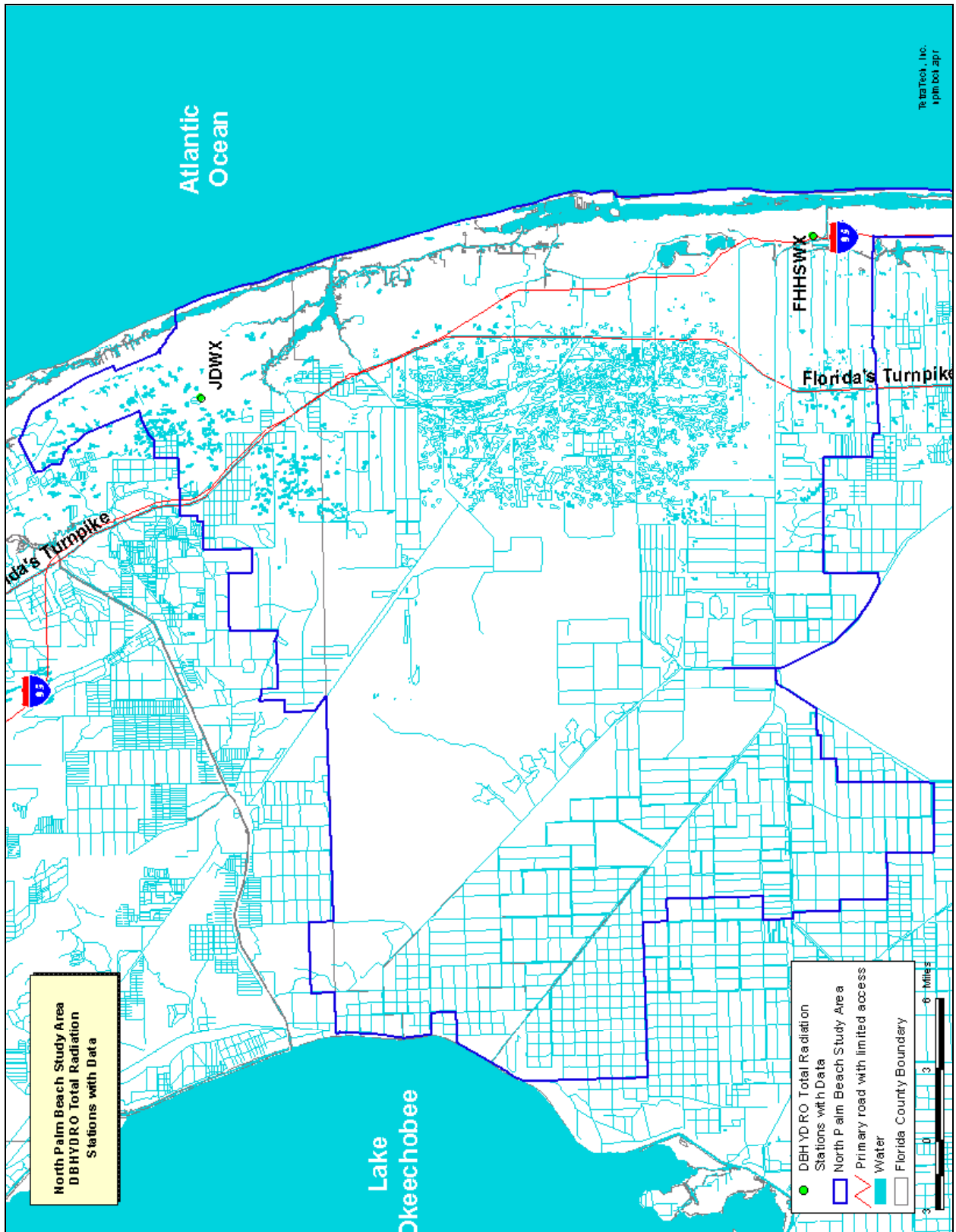
- Station
- Agency
- Start Date
- End Date
- Data Filename

All total radiation data are in units of kilowatts per meter squared. Figure 2-10 provides an illustration of the locations of the DBHYDRO total radiation stations.

Table 2-10 Metadata for DBHYDRO Total Radiation Data

Station	Agency	Start Date	End Date	Filename
JDWX	WMD	1997	2003	dbhydro-radt-npb.txt
FHHSWX	WMD	2000	2002	dbhydro-radt-npb.txt

Figure 2-10 DBHYDRO Total Radiation Stations



2.9 Wind Speed

Wind speed data were obtained from the following sources:

- SFWMD DBHYDRO database for all the major SFWMD drainage basins in this study area.

Table 2-11 (DBHYDRO) provides the following metadata for the wind speed data:

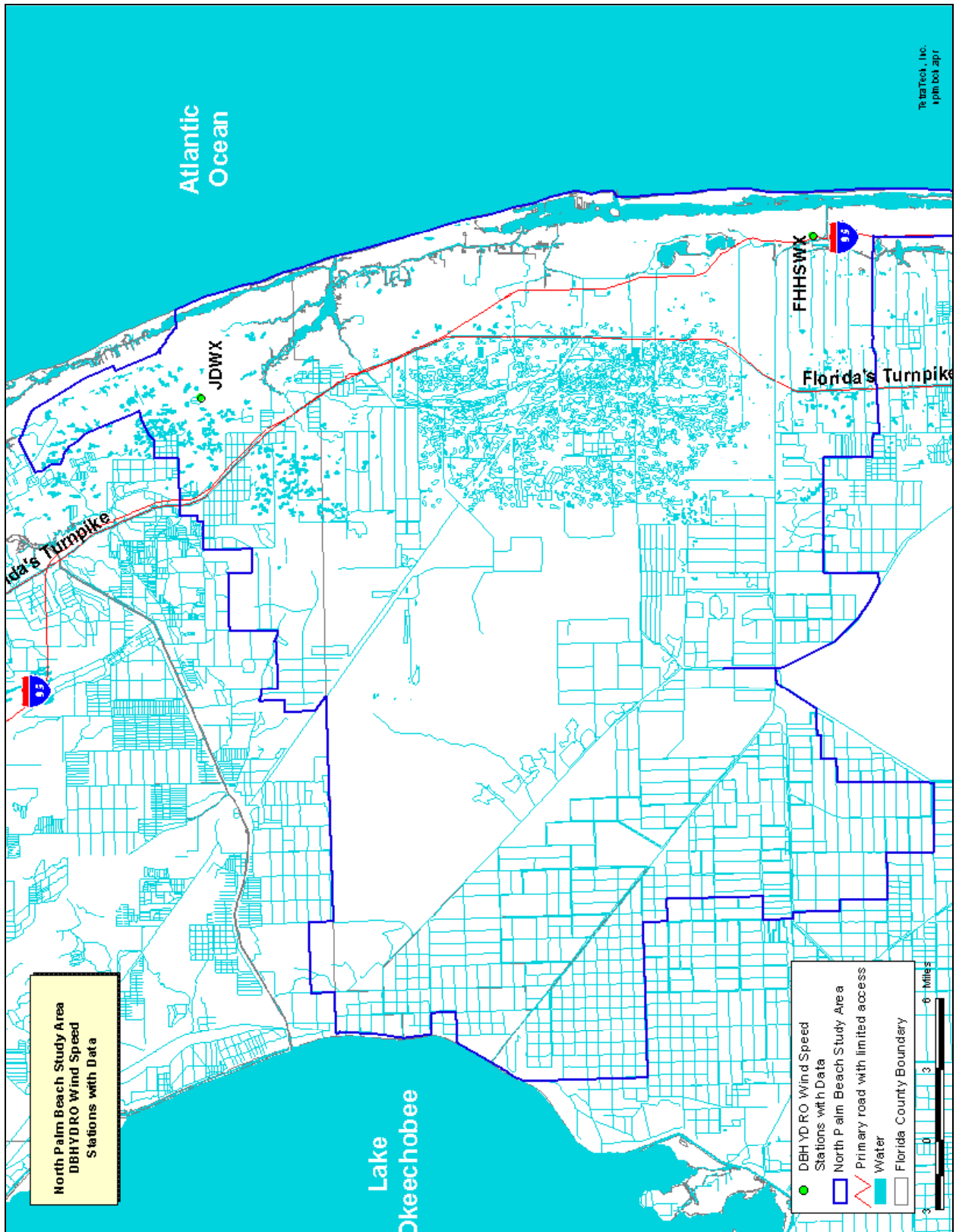
- Station
- Agency
- Start Date
- End Date
- Data Filename

All wind speed data are in units of miles per hour. Figure 2-11 provides an illustration of the locations of the DBHYDRO wind speed stations.

Table 2-11 Metadata for DBHYDRO Wind Speed Data

Station	Agency	Start Date	End Date	Filename
JDWX	WMD	1997	2003	dbhydro-winds-npb.txt
FHHSWX	WMD	2000	2002	dbhydro-winds-npb.txt

Figure 2-11 DBHYDRO Wind Speed Stations



2.10 Additional Parameters

Data for a series of additional parameters were obtained from the following sources for this study area:

- NCDC

Table 2-12 (NCDC) provides the following metadata for these additional parameters:

- Parameter
- Units
- Start Date
- End Date

Table 2-12 Metadata for NCDC Additional Parameters

Parameter	Units	Start Date	End Date
Pressure	in. Hg	7/1/1996	12/31/2000
Dew Point Temperature	deg. F	1/1/1948	1/1/2001
Visibility	mi.	1/2/1948	1/2/2001
Relative Humidity	%	1/3/1948	1/3/2001
Sea Level Pressure	mb	1/4/1948	1/4/2001
Dry Bulb Temperature	deg. F	1/5/1948	1/5/2001
Wet Bulb Temperature	deg. F	1/6/1948	1/6/2001
Wind Direction	dir/knots	1/7/1948	12/31/1963
Wind Speed	deg/knots	1/1/1964	12/31/2001

2.11 Point Sources

Point source data were obtained from the following sources:

- FDEPs WAFR database for all the major SFWMD drainage basins in this study area.

Table 2.13 provides the following metadata for the point sources in the study area:

- Facility ID
- Facility Name
- Facility Type
- Status
- NPDES
- Design Capacity, MGD
- Feature

Figure 2-13 provides an illustration of the locations of point sources in the study area.

Table 2-13 Metadata for Point Sources in the North Palm Beach Study Area

Facility ID	Facility Name	Facility Type ¹	Status ²	NPDES ³	Design Capacity, MGD ⁴	Feature ⁵
FL0001546	FPL RIVIERA PLANT	IW	A	Y	0.0000	Center of Plant
FL0026042	PRATT & WHITNEY (INDUSTRIAL WASTE)	IW	A	Y	0.0000	Center of Plant
FL0029106	SEACOAST UTILITIES NORTH PALM BEACH	DW	T	Y	0.0000	
FL0034649	LOXAHATCHEE ENV CONTROL DIST WWTP	DW	A	Y	9.0000	
FL0037168	BILTMORE CONDOMINIUM ASSOCIATION, INC	IW	A	Y	1.0000	Center of Plant
FL0038768	SEACOAST UTILITIES PGA WWTP	DW	A	Y	12.0000	
FL0040762	FLORIDA DOT TRICOUNTY COMMUTER RAIL	IW	N	N	0.0720	Center of Plant
FL0041360	EAST CENTRAL REGIONAL WWTP	DW	A	Y	55.0000	
FL0042358	JUPITER WATER TREATMENT PLANT	IW	A	Y	2.0000	Center of Plant
FL0043214	MCU CONSOLIDATED REUSE SYSTEM SOUTH COUNTY	DW	A	Y	4.2700	
FL0043745	OSCEOLA POWER L P COGENERATION	IW	A	Y	0.3300	Center of Plant
FL0168572	VILLAGE OF TEQUESTA RO CONCENTRATE DISPOSAL	IW	A	Y	1.3000	Center of Plant
FL0169081	PALM BEACH AGGREGATES (FKA GKK) SAND/LIMESTONE MINE (GP)	IW	A	Y	5.0000	Center of Plant
FL0177962	EVERGLADES STA 1W	IW	A	Y	0.0000	Other
FL0187011	FLORIDA SUGAR MARKETING AND TERMINAL ASSN INC	IW	X	Y	0.0000	Center of Plant

Facility ID	Facility Name	Facility Type ¹	Status ²	NPDES ³	Design Capacity, MGD ⁴	Feature ⁵
FLA013664	JUPITER FARMS ELEM SCHOOL	DW	A	N	0.0300	Center of Plant
FLA013665	ACREAGE PINE ELEM SCHOOL	DW	A	N	0.0000	Center of Plant
FLA013667	PALM BEACH CO SHERIFF CANINE TRAIN	IW	N	N	0.0000	Center of Plant
FLA013668	VICKY SIRAK KENNELS	IW	N	N	0.0000	Center of Plant
FLA013671	N COUNTY GENERAL AVIATION AIRPORT	DW	A	N	0.0120	
FLA013685	PALM BEACH PARK OF COMM STP	DW	A	N	0.0600	
FLA013693	PRATT & WHITNEY PLANT #1 PLANT	DW	A	N	0.2190	
FLA013700	LOXAHATCHEE GROVE SCHOOL STP	DW	A	N	0.0000	Center of Plant
FLA013704	US SUGAR CORP BRYANT VILLAGE	DW	A	N	0.1100	
FLA013709	DELTA AIR LINES , INC	IW	N	N	0.0000	Center of Plant
FLA013717	EVERGLADES YOUTH CAMP	DW	A	N	0.0125	
FLA013718	BANYAN GOLF CLUB INC	DW	A	N	0.0080	Center of Plant
FLA013720	PRATT & WHITNEY DILUTE ACID/ALK RINSE	IW	N	N	1.1000	Front Gate
FLA013723	WEST JUPITER CAMPGROUND	DW	A	N	0.0150	Center of Plant
FLA013726	ATLANTIC SUGAR ASSOC-LABOR CAMP	DW	A	N	0.0200	
FLA013728	GAIL'S (CLOCK) RESTAURANT	DW	A	N	0.0047	
FLA013729	PRATT & WHITNEY (AREA C)	IW	N	N	0.0000	Center of Plant
FLA013732	LOST TREE VILLAGE CLUB INC	DW	A	N	0.0980	Center of Plant
FLA013735	GARDEN WALK, A	DW	A	N	0.1000	Center of Plant
FLA013736	LION COUNTRY SAFARI	DW	A	N	0.0200	Center of Plant
FLA013738	OSCEOLA FARMS SUGAR MILL	DW	A	N	0.0020	Center of Plant
FLA013749	ROYAL PALM BCH VILLAGE UTIL DIW	DW	A	N	2.2000	
FLA013751	SUGAR FARMS CO-OP	IW	A	N	0.0010	Center of Plant
FLA013754	RANGER CONSTRUCTION INDUSTRIES (CLRS)	IW	A	N	0.0000	Center of Plant
FLA013755	BIG LAKE VILLAGES - PELICAN LAKE WWTP	DW	A	N	0.0680	
FLA013758	PRATT & WHITNEY C12/C14 COOLING T	IW	N	N	0.0000	Center of Plant
FLA013763	EVERGLADES CLUB RO CONCENTRATE	IW	A	N	0.1000	Center of Plant
FLA013767	SUNSPORT GARDENS	DW	A	N	0.0100	Center of Plant
FLA013773	SFWM D FIELD STATION VEHICLE WASH (CLRS)	IW	A	N	0.0015	Center of Plant
FLA013821	OLD TRAIL CLUBHOUSE WWTP	DW	A	N	0.0100	Center of Plant
FLA013848	TWIN RIVERS MHP	DW	A	N	0.0075	
FLA013851	HOBE SOUND MOBILE HOME PARK	DW	A	N	0.0150	Center of Plant
FLA013853	LAKESIDE VILLAGE MHP	DW	A	N	0.0150	Center of Plant
FLA013859	SOUTH MARTIN REGIONAL UTIL.(FKA HYDRATECH) WWTF	DW	A	N	1.2000	Front Gate

Facility ID	Facility Name	Facility Type ¹	Status ²	NPDES ³	Design Capacity, MGD ⁴	Feature ⁵
FLA013863	BLOOMFIELD MEADOWS VACATION PARK(FORMERLY HOBE SOUND VAC PK)	DW	A	N	0.0050	
FLA015034	US SUGAR CORP - BRYANT MILL	IW	A	N	19.5000	
FLA015037	ATLANTIC SUGAR ASSOCIATION, INC	IW	A	N	1.4000	Center of Plant
FLA015039	OSCEOLA FARMS COMPANY	IW	A	N	68.1000	Center of Plant
FLA016595	CALLERY JUDGE GROVE PACKING PLANT (CLRS)	IW	A	N	0.0660	Center of Plant
FLA016728	ATLANTIC SUGAR RO-RO PLANT	IW	A	N	0.0330	
FLA016777	OSCEOLA FARMS - RO	IW	A	N	0.0086	Center of Plant
FLA016832	PRATT & WHITNEY (E8B AREA)	IW	N	N	0.0000	Center of Plant
FLA016842	JONATHAN DICKINSON MTA COOLING TOWER BLOWDOWN DISPOSAL	IW	A	N	0.0100	Center of Plant
FLA016878	NICHOLS SANITATION TRUCK WASH (CLRS)	IW	A	N	0.0100	Center of Plant
FLA137219	TRI-GAS, INC , INDUSTRIAL GASES	IW	A	N	0.0250	Center of Plant
FLA137278	ATLANTIC SUGAR ASSOC-MILLSITE	DW	A	N	0.0050	Center of Plant
FLA137600	PRATT & WHITNEY (AREAS A,C,C11,C12/14,D E)	IW	N	N	0.0000	Center of Plant
FLA160521	LAFARGE CORPORATION, INC	IW	N	N	0.0050	Center of Plant
FLA172421	JUPITER FARMS COMM SHOPPING CENTER	DW	A	N	0.0364	Center of Plant
FLA177971	PALM BEACH COUNTY PALM TRAN DEPOT (AIRPORT SITE)	IW	N	N	0.0010	Center of Plant
FLA185655	THE BREAKERS R O CONCENTRATE DISPOSAL	IW	A	N	0.1700	Center of Plant

¹ Type of Facility; DW - Domestic Wastewater facility, IW - Industrial Wastewater facility

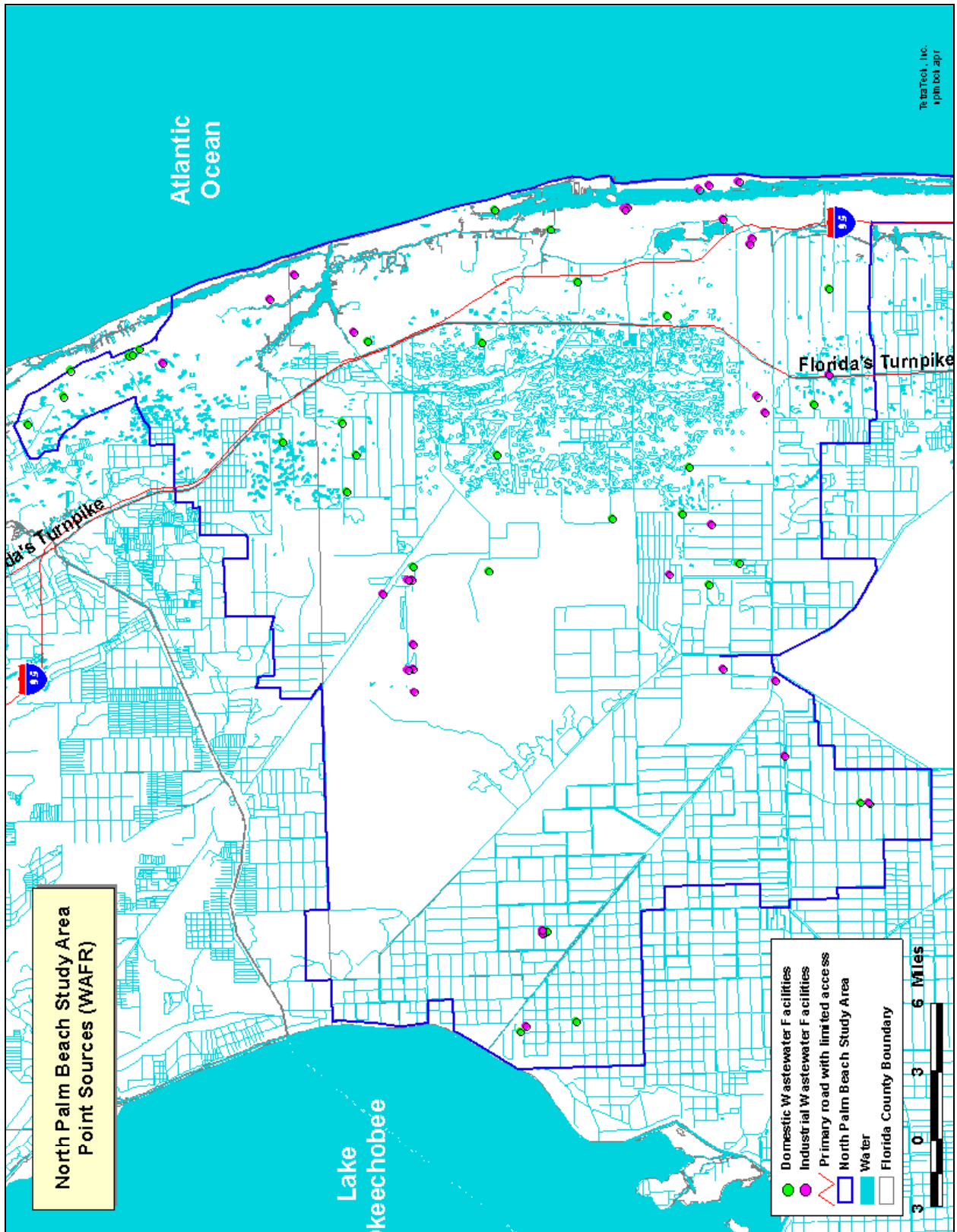
² Status of Facility; A - Active, N - Non-Active

³ Permitted under the National Pollution Discharge Elimination System (NPDES); N - No, Y - Yes

⁴ Design capacity of facility in million gallons per day (MGD)

⁵ Description of the point used to represent the facility

Figure 2-13 North Palm Beach Point Sources (WAFR)



2.12 Topography

GIS coverages of topography were obtained from the SFWMD for the North Palm Beach County study area, and are provided in ArcView shapefile format. The topography coverages contain contours at 5-ft intervals. The coverages were provided in SFWMD projections, but for ease of use and compatibility with coverages from other organizations, all shapefiles have been converted to standard projection units used by FDEP.

Light Distance And Ranging (LIDAR) data is currently being processed for this study area. As water inputs in this area may flow out due to the effects of gravity, LIDAR data, once available, may be quite useful for determining where the water is

2.13 Soils

GIS coverages of soils were obtained from the SFWMD for the North Palm Beach County study area, and are provided in ArcView shapefile format. The soils coverages were developed by the SFWMD from the NRCS SURRGO coverages. The coverages contain soil type identifiers and are provided in ArcView shapefile format. They are given in SFWMD projections, but for ease of use and compatibility with coverages from other organizations, all shapefiles have been converted to standard projection units used by FDEP.

Appendix A

Data Retrieved Through the FEDET Tool