

Pinhook Swamp

Baker and Columbia Counties

Critical Natural Lands

Purpose for State Acquisition

Pinhook Swamp: The pine flatwoods and swamps between the Osceola National Forest and the Okefenokee National Wildlife Refuge have been logged, but are otherwise undisturbed. The Pinhook Swamp project will protect and restore a natural area linking those two conservation lands and the Suwannee River, providing a huge unpopulated tract of land for such wildlife as the Florida black bear and sandhill crane; maintaining the water flows from this area to the Okefenokee Swamp, Suwannee River, and St. Mary's River; and giving the public a large, near-wilderness tract in which to enjoy various recreational activities, from simple nature appreciation to active hunting and fishing.

Suwannee Buffers (Deep Creek Site): The Suwannee River, for all its beauty, flows through pine plantations and farms for much of its course, and only its high limestone banks are in close to a natural state—and they are prime sites for residential development. The Deep Creek Site will protect two natural areas along the river or its tributaries, protecting the highest waterfall in the peninsula and the highest bluffs on the river, enhancing the water quality of the river and its tributaries; protecting northern plants that grow along the river and rare fish that live in the river; and giving the public scenic areas to enjoy for years to come. The Florida National Scenic Trail, a cross-Florida hiking and non-motorized trail, is also planned to cross this project. The trail is a

congressionally designated national scenic trail

Managers

Pinhook Swamp: United States Forest Service (USFS) and The Division of Forestry (DOF), Department of Agriculture and Consumer Services. Division of Recreation and Parks (DRP), Florida Department of Environmental Protection (southern Deep Creek); the DOF (northern Deep Creek).

General Description

Pinhook Swamp: The project consists of a large tract of mostly wet flatwoods, floodplain swamp, and floodplain forest between Osceola National Forest and Okefenokee Swamp National Wildlife Refuge. It provides a linkage between these managed areas as well as increased protection for this wetlands/flatwoods ecosystem, which is important for the long-term conservation of the state-threatened Florida black bear and other animals. Pinhook Swamp also provides excellent habitat for other wetland-dependent species such as the state-threatened Florida sandhill crane. The Swamp is connected to the Suwannee River, St. Mary's River and the Okefenokee Swamp. The archaeological and historic value of the project is low to moderate. The greatest threats to the area are intensive silviculture and mining.

The Deep Creek Drainage Tract protects buffer areas of four tributaries of the Suwannee River and much of the watershed of Deep Creek and serves as a corridor between the Osceola National Forest, Big Shoals State Park, and Suwannee River Water Management District lands along the River.

Pinhook Swamp	
FNAI Elements	
Florida Black Bear	G5T2/S2
Florida Sandhill Crane	G5T2T3/S2S3
Gopher Tortoise	G3/S3
Swallow-tailed Kite	G5/S2
Okefenokee Zale Moth	G2/S1
<i>Large Rosebud Orchid</i>	G4/S1
Many-lined Salamander	G5/S1
Gopher Frog	G3/S3
Carpenter Frog	G5/S2
Timber Rattlesnake	G4/S3
Blackbanded Sunfish	G4/S3
Spotted Turtle	G5/S3?
17 rare species are associated with the project	

Placed on List	1992
Project Area (Acres)	183,991
Acres Acquired	126,890**
at a Cost of	\$65,183,376
Acres Remaining	57,101
w/Estimated (Tax Assessed) Value of	\$16,469,070

** Includes acreage acquired by the Suwannee River Water Management District



PINHOOK SWAMP: OVERVIEW

BAKER AND COLUMBIA COUNTIES

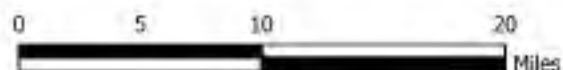
Map 1

- A. Pinhook Swamp Site (western part)
- B. Deep Creek Drainage Tract Site



Map 2

- A. Pinhook Swamp Site (eastern part)



OCTOBER 2005

Pinhook Swamp

Public Use

The Pinhook Swamp is designated as a forest with such uses as fishing, hunting, canoeing, camping and hiking.

The Deep Creek site will be designated for use as a state park and a state forest, with such public uses as fishing, boating, hunting, camping, hiking and environmental education.

Acquisition Planning

The large Rayonier tract connecting the Osceola National Forest to the Okefenokee National Wildlife Refuge has been acquired by the state. It will be used as the basis for a land-and-minerals exchange (projected to close in 2003) with the United States Department of Agriculture (USDA) Forest Service.

Pinhook Swamp: Phase I (essential) consists of large tracts adjacent to Okefenokee National Wildlife Refuge and Osceola National Forest—J.W. Langdale Woodlands, Inc. and Jefferson Smurfit Corp./Carnegie US Steel Pension Funds. Phase II is the “Impassable Bay” tract—ITT Rayonier/Sam Summers (acquired by USFS through The Nature Conservancy (TNC) and all remaining owners.

On July 16, 1996, the LAMAC added 18,100 acres to the project boundary. Additionally, the LAMAC approved the addition of federal mineral rights under state-owned lands to the Pinhook project for exchange purposes.

On August 22, 2000, the Acquisition and Restoration Council added 25,000 acres to the Pinhook Swamp project

At the April 6, 2001, Council meeting, the Suwannee Buffers, Deep Creek Site was combined with the Pinhook Swamp Project.

On October 24, 2002 the Council added 4,585 acres to the project boundaries.

On June 4, 2004 the Council added 31,225 acres in Baker County, previously assumed to be included, as part of a 2000 boundary amendment, in the boundaries of the Pinhook Swamp project.

The BOT acquired 8,311 acres in August 2005 through five conservation easements.

Coordination

Pinhook Swamp is a shared acquisition with the USFS. TNC is an intermediary in the purchase of some tracts for the federal government. The Deep Creek site is on the Suwannee River Water Management District (SRWMD) five-year plan for land acquisition. St. Johns River Water Management District (SJRWMD) is also considered a partner.

Management Policy Statement

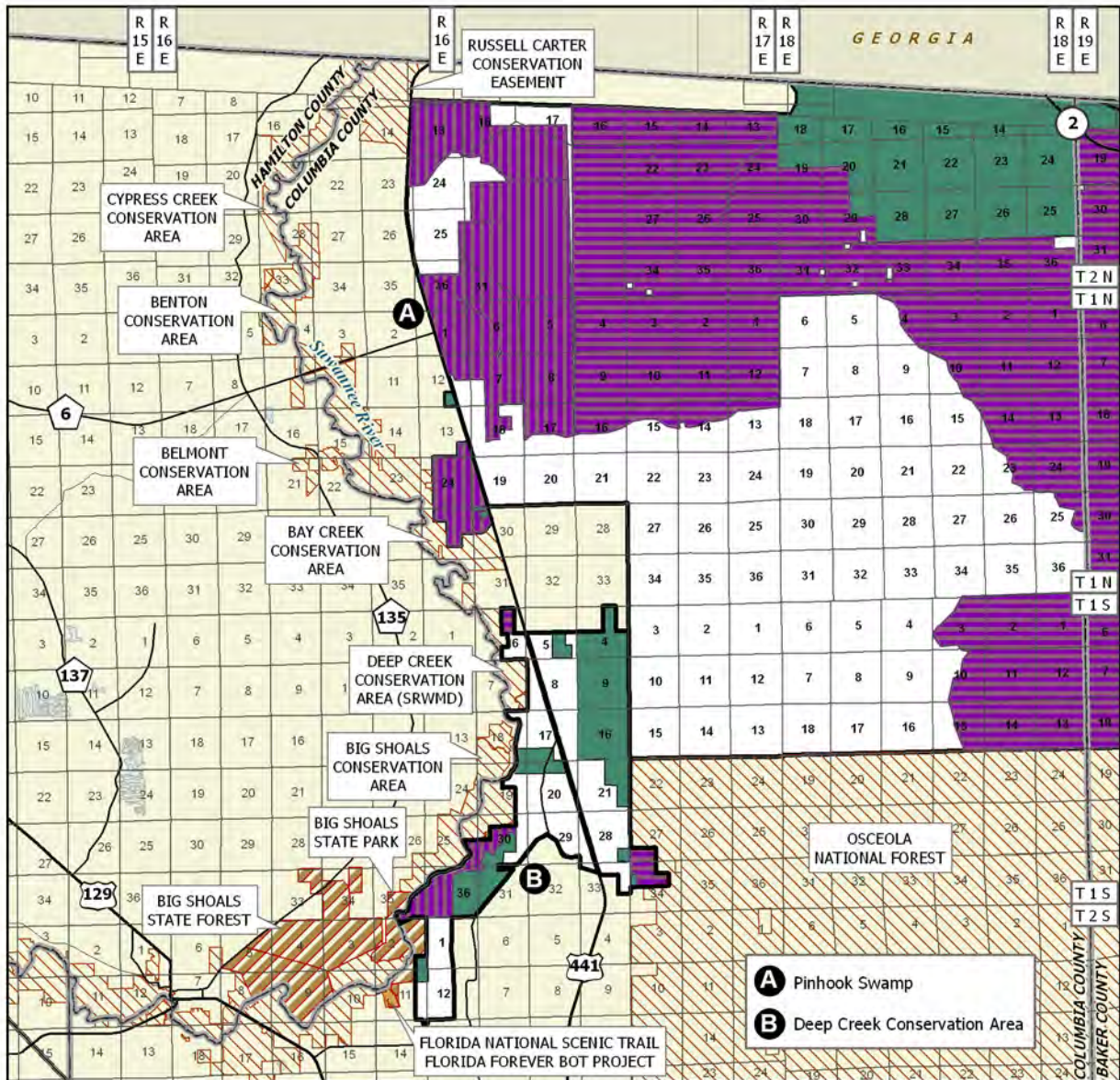
Pinhook Swamp: The primary goals of management of the Pinhook Swamp project are: to conserve and protect significant habitat for native species or endangered and threatened species; to conserve, protect, manage, or restore important ecosystems, landscapes, and forests, in order to enhance or protect significant surface water, coastal, recreational, timber, fish or wildlife resources which local or state regulatory programs cannot adequately protect; and to provide areas, including recreational trails, for natural-resource-based recreation.

Suwannee Buffers (Deep Creek): The primary goals of management of this part of the project are: to conserve and protect environmentally unique and irreplaceable lands that contain native, relatively unaltered flora and fauna representing a natural area unique to, or scarce within, a region of this state or a larger geographic area; to conserve, protect, manage, or restore important ecosystems, landscapes, and forests, in order to enhance or protect significant surface water, coastal, recreational, timber, fish or wildlife resources which local or state regulatory programs cannot adequately protect; and to provide areas, including recreational trails, for natural-resource-based recreation.

Management Prospectus

Pinhook Swamp:

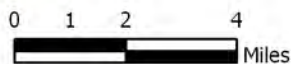
Qualifications for state designation The Pinhook Swamp is a large area of timbered flatwoods and swamps between the Osceola National Forest and the Okefenokee National Wildlife Refuge. Its large size, strategic location, and forest and wildlife resources qualify it as a state forest and state wildlife management area.



PINHOOK SWAMP: MAP 1 OF 2

BAKER AND COLUMBIA COUNTIES

-  Florida Forever BOT Project Boundary
-  Acquired for Conservation (Fee Simple)
-  Acquired for Conservation (Less-Than-Fee)
-  Essential Parcel(s) Remaining
-  Other Florida Forever BOT Projects
-  State Owned Lands
-  Other Conservation Lands



SEPTEMBER 2009

Pinhook Swamp

Managers (Monitor) The DOF and the United States Department of Agriculture, Forest Service are the recommended Managers.

Conditions affecting intensity of management Pinhook is a low-need (moderate need) tract.

Timetable for implementing management and provisions for security and protection of infrastructure A portion of the site would immediately fall under the National Forests in Florida's Land and Resource Management Plan (Forest Plan) and a portion under state protection. Management activities will focus on site security, resource inventory and management, plus any necessary prescribed fire management.

Revenue-generating potential In cooperation with the Florida Fish and Wildlife Conservation Commission (FWC), this area may one day provide revenues from quota hunts. The Forest Service and DOF will soon be working with FWC to obtain a projected revenue. State and National Forest user fees are other sources of revenue.

Cooperators in management activities The Florida Fish and Wildlife Conservation Commission and the U.S. Fish & Wildlife Service, which manages the Okefenokee National Wildlife Refuge adjacent to Pinhook's northern boundary, will be cooperators in managing the area.

Suwannee Buffers:

Qualifications for state designation The southern part of the Deep Creek Drainage tract has unique resources that qualify it as a unit of the state park system. The project's size and diversity also makes it highly desirable for use and management as a state forest.

Manager The DRP is recommended as Manager of Deep Creek. The DOF is recommended as Manager of the northern three-quarters of the Deep Creek Drainage tract.

Conditions affecting intensity of management

The southern portion of the Deep Creek Drainage tract is a high-need management area including public recreational use and development compatible with resource management. On the areas to be managed by the DOF there are no known major disturbances that will require extraordinary attention, so the level of management intensity is expected to be typical for a state forest.

Timetable for implementing management and provisions for security and protection of infrastructure Within the first year after acquisition of the areas to be

managed by the DRP, management activities will concentrate on site security, natural and cultural resource protection, and efforts toward the development of a plan for long-term public use and resource management.

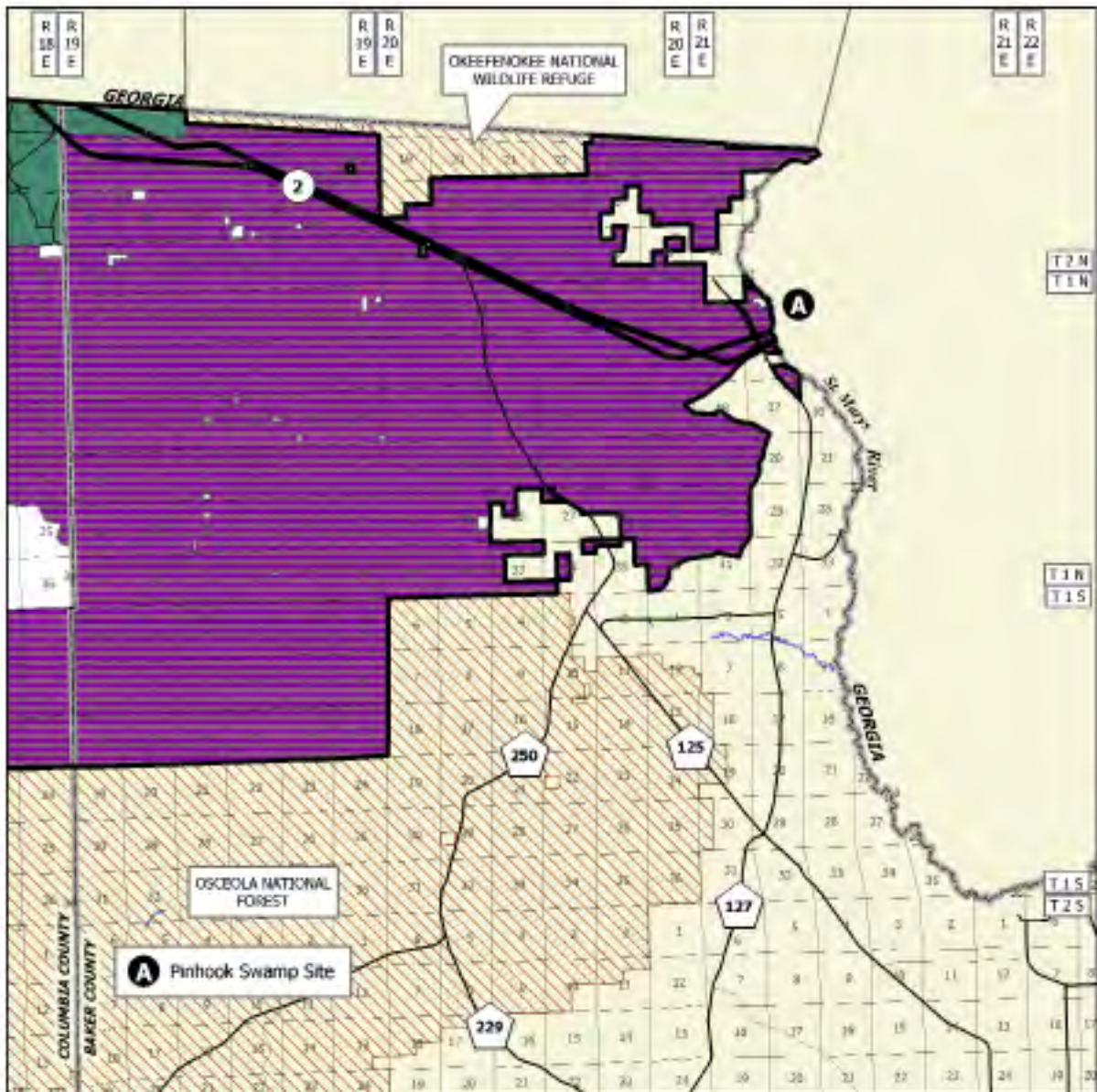
The DOF will provide public access for low-intensity, non-facilities-related outdoor recreation. Initial activities will include securing the site, providing public and fire management accesses, inventorying resources, and removing trash. The DOF will provide access to the public while protecting sensitive resources. The project's natural resources and threatened and endangered plants and animals will be inventoried to provide the basis for a management plan.

Long-range plans of the DOF will generally be directed toward restoring disturbed areas to their original conditions, as far as possible, as well as protecting threatened and endangered species. An all-season burning program will use, whenever possible, existing roads, black lines, foam lines and natural breaks to contain fires. Timber management will mostly involve improvement thinning and regeneration harvests. Plantations will be thinned and, where appropriate, reforested with species found in natural ecosystems. Stands will not have a targeted rotation age. Infrastructure will primarily be located in disturbed areas and will be the minimum required for management and public access. The DOF will promote environmental education.

Estimate of revenue-generating potential The DRP expects no significant revenue to be generated initially. After acquisition, it will probably be several years before any significant public facilities are developed. The amount of any future revenue generated would depend on the nature and extent of public use and facilities. The DOF will sell timber as needed to improve or maintain desirable ecosystem conditions. These sales will provide a variable source of revenue, but the revenue-generating potential for this project is expected to be low.

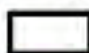



Cooperators in management activities No local governments or others are recommended for management of these project areas.

(continued)



PINHOOK SWAMP: MAP 2 OF 2

BAKER AND COLUMBIA COUNTIES

-  Florida Forever BOT Project Boundary
-  Acquired
-  Essential Parcel(s) Remaining
-  Other Conservation Lands



OCTOBER 2005



Management Cost Summary/DRP

Category	Startup	Recurring
Source of Funds	CARL	CARL
Salary	\$22,167	\$22,167
OPS	\$14,560	\$14,560
Expense	\$11,400	\$11,400
OCO	\$55,000	\$1,000
FCO	\$85,000	\$0
TOTAL	\$188,127	\$49,127

Management Cost Summary/DOF

Category	Startup	Recurring
Source of Funds	CARL	CARL
Salary	\$28,140	\$28,140
OPS	\$0	\$0
Expense	\$13,000	\$5,000
OCO	\$81,100	\$2,000
FCO	\$0	\$0
TOTAL	\$122,140	\$35,140

Updated 1/6/2011