

Dickerson Bay/Bald Point

Wakulla and Franklin Counties

Climate Change Lands

Purpose for State Acquisition

On the coast of Wakulla and Franklin Counties, the shallow, waveless Gulf of Mexico laps against the westernmost Big Bend salt marshes and the easternmost white sand beaches of the Panhandle. The St. Marks National Wildlife Refuge already protects much of this coast; the Dickerson Bay/Bald Point project will protect more, including areas critical to the survival of the endangered Kemp's ridley sea turtle. In so doing, it will also protect the fishery in the area by protecting its foundation - rich mud flats and seagrass beds - and will add land to Mashes Sands County Park where people may enjoy the beauty of this little-disturbed coast.

Manager

The Division of Recreation and Parks, Florida Department of Environmental Protection will manage that portion of the project in Franklin County; U.S. Fish and Wildlife Service and Wakulla County will separately manage individual parcels in Wakulla County.

General Description

The project, comprising three separate areas, includes uplands around Dickerson, Levy, and Ochlockonee Bays. These bays provide foraging habitat for juvenile Kemp's ridley sea turtles, the world's most endangered sea turtle, and other state or globally rare

birds (e.g., wood stork, bald eagle) and sea turtles (e.g., loggerhead). The uplands surrounding the three bays are an intricate mosaic of lakes, depression marshes, mesic flatwoods (high quality to disturbed) that support populations of such rare animals as Sherman's fox squirrel and gopher tortoise, scrubby flatwoods, and scrub connected with the marine communities by numerous tidal creeks, salt flats, and salt marshes. The Bald Point site includes beach dunes used by many species of shore birds. The condition of these uplands might be expected to play a larger role in maintaining the quality of the marine communities than would be the case with a straight shoreline. The natural upland communities adjoin similar communities in St. Marks National Wildlife Refuge to the north and west. Twelve archaeological sites are known from Bald Point. The Bald Point site is threatened by development.

Public Use

The southern part of this project (i.e., Bald Point and southern Dickerson Bay) is designated for use as a state park that will augment the recreational opportunities of the adjacent Mashes Sands County Park with areas for picnicking, hiking, camping, and canoeing. The beaches of Bald Point are suitable for swimming and other activities. The northern part of this project will be incorporated into the St. Marks Wildlife Refuge. This portion is suitable for boating.

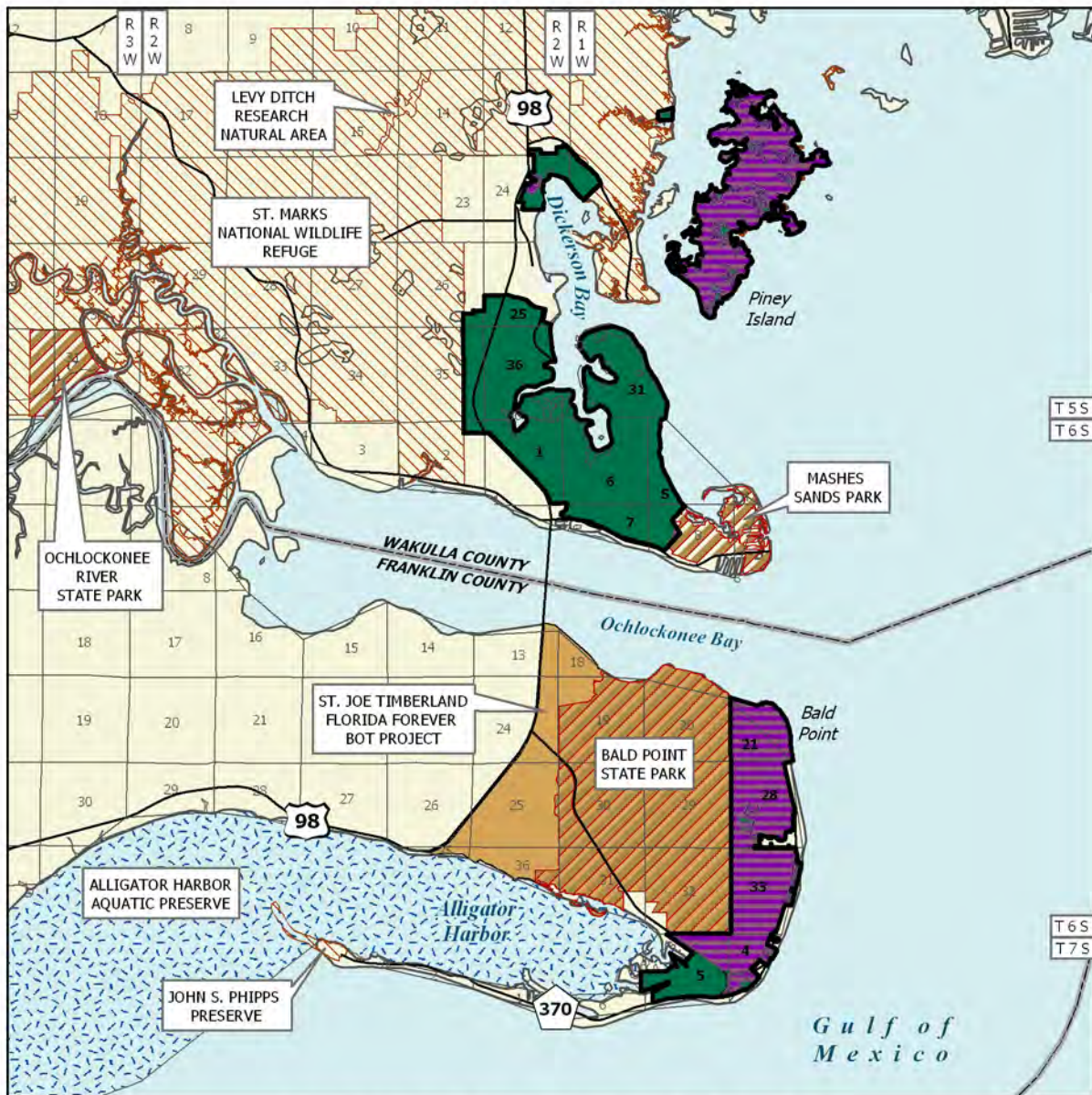
Dickerson Bay/Bald Point FNAI Elements	
Kemp's Ridley	G1/S1
Florida Black Bear	G5T2/S2
Green Turtle	G3/S2
Gopher Tortoise	G3/S3
Loggerhead	G3/S3
Swallow-tailed Kite	G5/S2
Lobeless Spiny Burrowing Beetle	G1G2/S1S2
<i>Godfrey's Blazing Star</i>	G2/S2
<i>Scare-weed</i>	G3/S3
Merlin	G5/S2
Black-crowned Night-heron	G5/S3
Southeastern Fox Squirrel	G5T5/S3
12 rare species are associated with the project	

Acquisition Planning

Dickerson Bay: Larger ownerships should be negotiated before the smaller ones. The essential parcels are McMillan, Brunstad, Nichols, JDN Enterprises, Meara, Cobleigh, Panacea Coastal Properties and Metcalf. Piney Island, also an essential parcel, was donated to the USFWS in 1996.

Placed on List	1996
Project Area (GIS Acres)	5,851
Acres Acquired	1,387
at a Cost of	\$9,356,265
Acres Remaining	4,464
with Estimated (Tax Assessed) Value of	\$4,562,208

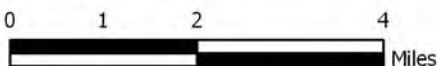
Dickerson Bay/Bald Point



DICKERSON BAY/BALD POINT

WAKULLA AND FRANKLIN COUNTIES

-  Florida Forever BOT Project Boundary
-  Acquired for Conservation (Fee Simple)
-  Essential Parcel(s) Remaining
-  Other Florida Forever BOT Projects
-  State Owned Lands
-  Other Conservation Lands
-  State Aquatic Preserves



OCTOBER 2009

Bald Point: All parcels are essential. The LGR Investment Fund, LTD. has been acquired.

On October 15, 1998, the LAMAC redesignated the Jer Be Lou Development Co. parcel as essential. The parcel has been acquired.

Coordination

The USFWS is an acquisition partner, and coordination between the state and federal government should be maintained.

On August 27, 1998, a portion of the Bald Point project was selected to receive Florida Communities Trust grant money.

Management Policy Statement

The primary objectives of management of the Dickerson Bay/Bald Point project are to maintain and restore the natural communities around Dickerson and Levy Bays and to give the public an area for hiking, fishing, camping, and other recreation compatible with protection of the natural resources. Protecting the natural communities of the area is critical to the survival of the endangered Kemp's ridley sea turtle and will also help protect habitat for wading birds and shore birds. It will also help protect a recreational and commercial fishery that depends on the marine life of the bays.

The project should be managed under the single-use concept: management activities should be directed toward the preservation of the salt marshes, flatwoods, and other communities around the bays. Consumptive uses such as hunting or logging should not be permitted. Managers should control public access to the project; limit public motor vehicles to one or a few main roads; thoroughly inventory the resources; burn the fire-dependent flatwoods in a pattern mimicking natural lightning-season fires, using natural firebreaks or existing roads for control; and monitor management activities to ensure that they are actually maintaining or improving the quality of the natural communities. Managers should limit the number and size of recreational facilities, such as hiking trails, ensure that they avoid the most sensitive resources, and site them in already disturbed areas when possible.

The project includes nearly all of the undeveloped, privately-owned land along Dickerson and Levy Bays and

adjoins the Mashles Sands county park on its southeast border. It therefore has the configuration and location to achieve its primary objectives.

Management Prospectus

Qualifications for state designation The large south parcel of the Dickerson Bay portion of the project has the capacity to provide an effective buffer for the protection of the marine communities of Levy and Dickerson Bays. The highly endangered Kemp's ridley sea turtle frequents the waters of these bays. The parcel is also capable of providing resource based recreational opportunities, particularly in support of the adjacent county park at Mashles Island. For these reasons, the property would be suitable as a state park within the state park system.

Manager In Franklin County: Division of Recreation and Parks; in Wakulla County: U.S. Fish and Wildlife Service and Wakulla County.

Conditions affecting intensity of management The property will be a high need management area. Public recreational use and development compatible with resource management will be an integral aspect of management.

Timetable for implementing management and provisions for security and protection of infrastructure Upon acquisition and assignment to the Division, public access will be provided for low intensity, non-facility related outdoor recreation activities. Additionally, initial management efforts will concentrate on site security, fire management and development of a resource inventory and public use plan. Vehicular access by the public will be confined to designated points and routes.

Protection of the adjacent marine environment will be a primary focus for the property. Over the long term, however, a wide range of resource-based recreation and environmental education facilities may be promoted. The nature, extent and location of infrastructure will be defined by the management plan developed for the property. Restoration and maintenance of natural communities will be incorporated into long range management efforts and disturbed areas will be restored to conditions that would be expected to occur in natural systems, to the extent practical.

Revenue-generating potential No significant revenue is expected to be generated from this property initially. After acquisition, it will probably be several years before any significant public facilities might be developed. The amount of any future revenue will depend

Dickerson Bay/Bald Point

on the nature and extent of public use identified in the management plan developed for the property. The property has potential for generating local economic benefits. The pine plantation that covers a large portion of the Bald Point project will be managed with the assistance of the DOF has considerable value and can be expected to provide significant revenue if acquired with the land. No other significant revenues would be expected over the short-term after acquisition. The amount of future revenues from other than timber sales will depend on the nature and extent of public use and facilities developed.

Cooperators in management activities Due to the potential for enhancement of the adjacent county park by this project area, coordination of management efforts may be desirable. On the Bald Point site, the DOF, will be consulted on forest management and timber issues related to planning and implementation of a forest resource management plan. Other federal, state, and local government agencies will be consulted, as appropriate, to further resource management, recreational and educational opportunities, and the development of the project lands for state park purposes.

Updated 12/30/2010

Management Cost Summary/USFWS

Category Source of Funds	Startup USFWS	Recurring USFWS
Salary	\$7,800	N/A
OPS	\$0	N/A
Expense	\$500	N/A
OCO	\$0	N/A
FCO	\$0	N/A
TOTAL	\$8,300	N/A

Management Cost Summary/DRP

Category Source of Funds	Startup CARL	Recurring CARL
OPS	\$7,092	\$7,092
Expense	\$13,269	\$13,269
OCO	\$80,000	\$1,000
FCO	\$13,269	\$0
TOTAL	\$262,132	\$72,361