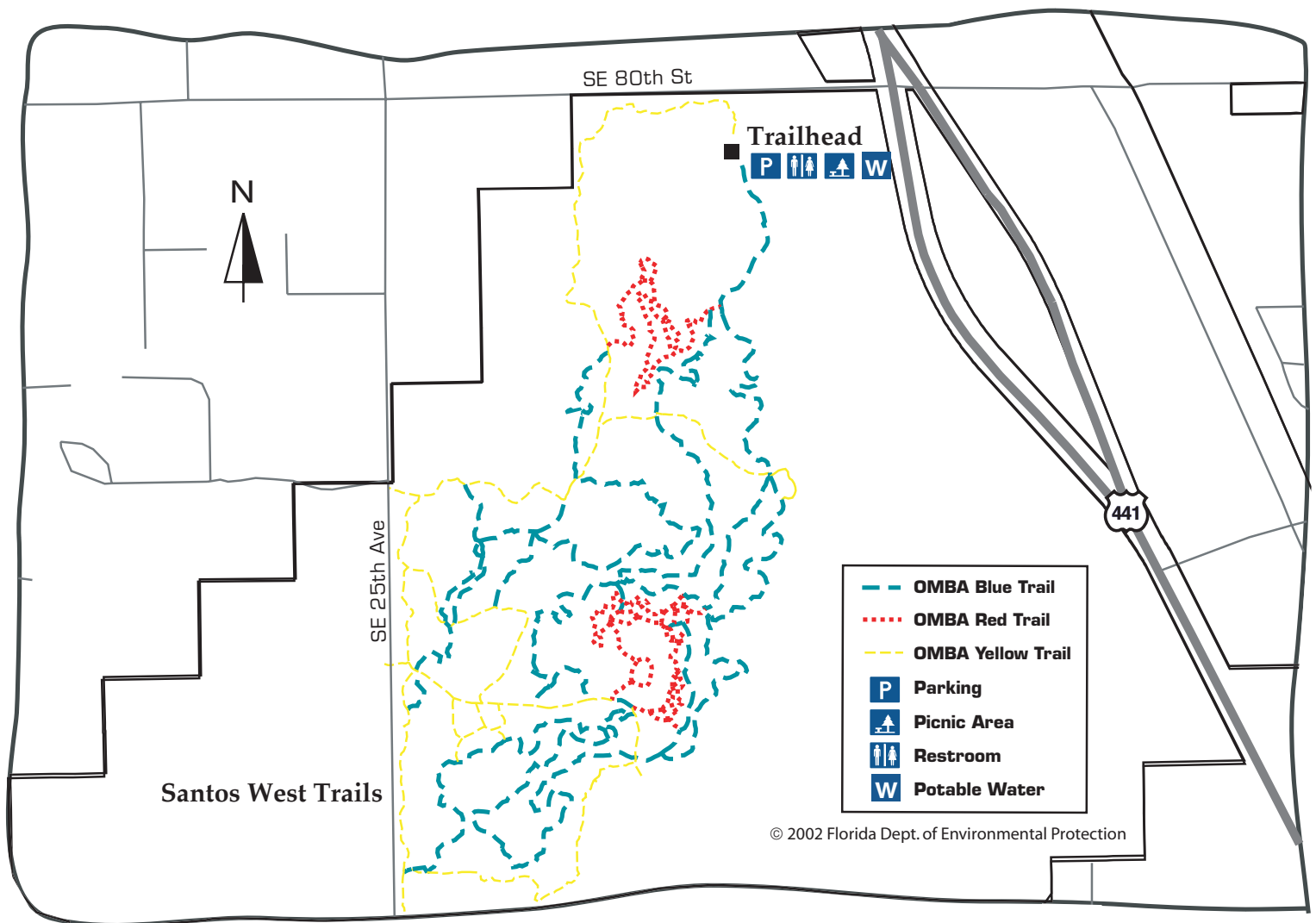


Santos – Bike Trails East

Stretching from the Gulf of Mexico to the St. Johns River, the Marjorie Harris Carr Cross Florida Greenway occupies much of the land formerly known as the Cross Florida Barge Canal. This 110-mile corridor encompasses a variety of natural habitats and offers an array of trails and recreation areas where visitors can experience Florida's premier greenway.

This portion of the greenway is best known for mountain bike trails. Over 30 miles of trails with three levels of difficulty are available to accommodate beginners to experts. The Santos trailhead draws riders from all over the state and country to experience what many call the best bike trails in Florida.

In addition to bicycle trails, the FTA hiking trail and equestrian and wagon trails are marked and maintained between Santos and 475A.



Santos – Bike Trails East

Major Activities: Mountain Biking

Trail Length/Surface: Over 30 miles, unpaved

Fee: None

Counties: Marion

Nearby Cities: Ocala

Notes: The Ocala Mountain Biking Association has identified the level of difficulty of the trails using a color-coded system to ensure trails are easy to locate and follow. The highest level of difficulty is red, blue is intermediate and yellow is the easiest level. The trailhead currently has potable water, a restroom, a fenced equestrian staging area, 80 paved parking spots, and 3 picnic pavilions – 3 with water, and campsites. -

Directions/Access: Off 1-75 take exit 67 (Don Garlits Museum), head east on 484 and take 475 north then turn east onto 80th. The Santos trailhead parking lot and facilities are on the right just before you get to 441.

Contact Information:

Office of Greenways and Trails

Marjorie Harris Carr Cross Florida Greenway – Headquarters (Ocala) 352-236-7143

(<http://www.floridagreenwaysandtrails.org/cfg>)

Related Websites:

Office of Greenways & Trails (<http://www.floridagreenwaysandtrails.org>)

Ocala Mountain Bike Association (OMBA) (<http://www.omba.org/>)



www.floridagreenwaysandtrails.org