

# Florida Designated Paddling Trails

## Econlockhatchee River



Maytown

Lake Harney

SEMINOLE

Econlockhatchee River Paddling Trail Map 2

Econlockhatchee River Paddling Trail Map 1

Geneva

Lake Jesup

BREVARD

Oviedo

Chuluota

ORANGE

Bithlo

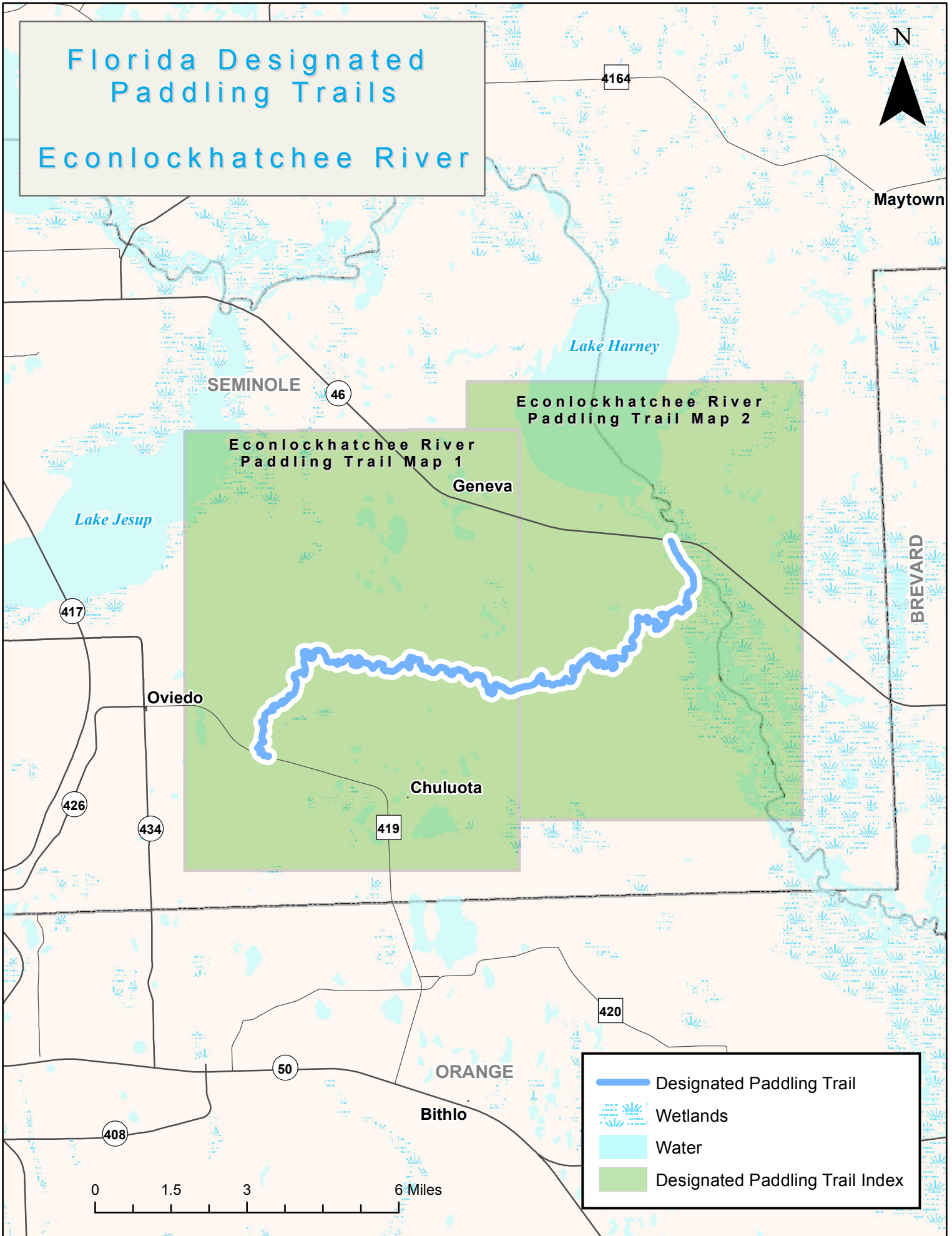
Designated Paddling Trail

Wetlands

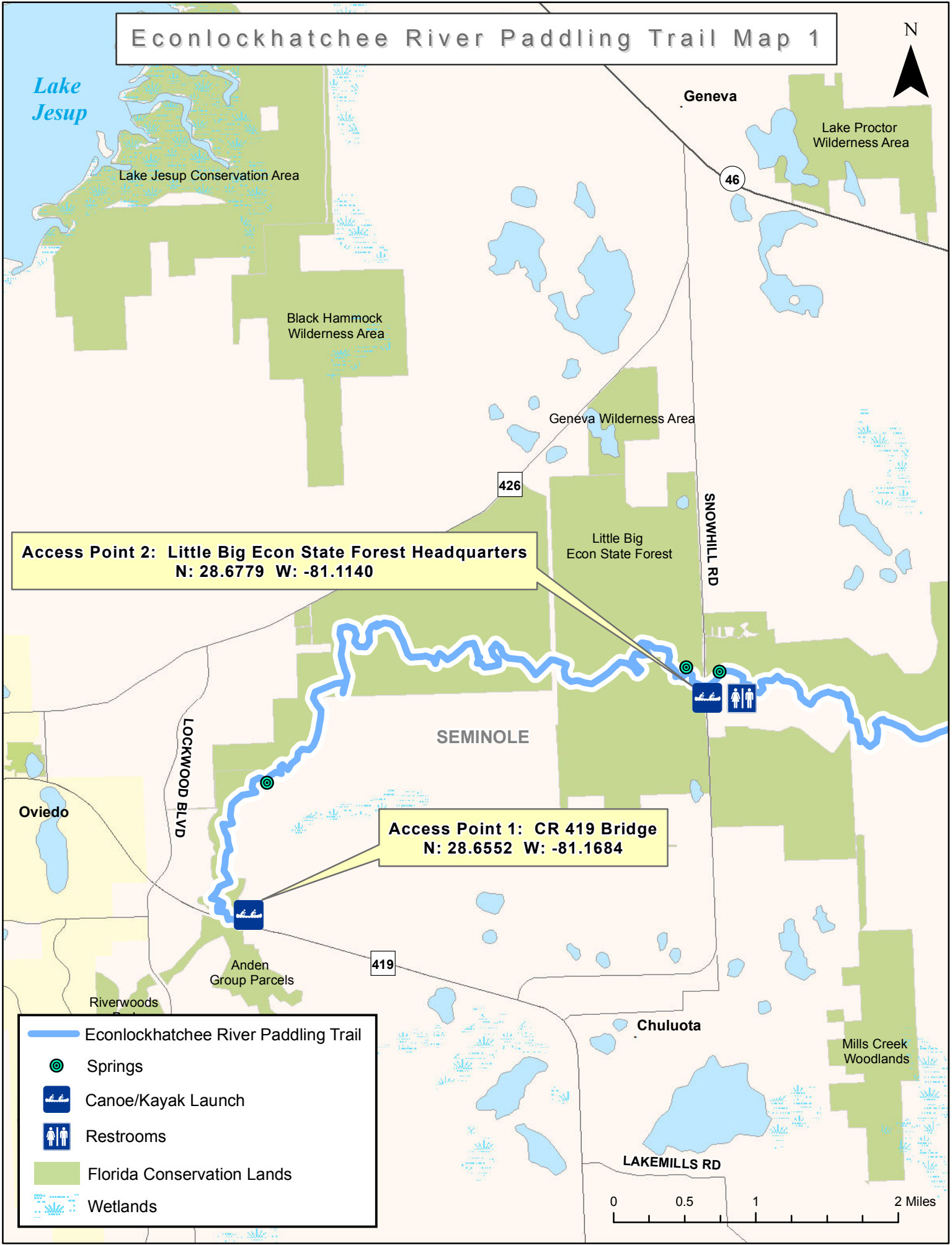
Water

Designated Paddling Trail Index

0 1.5 3 6 Miles



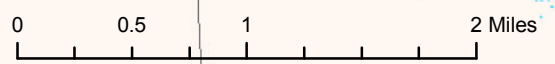
# Econlockhatchee River Paddling Trail Map 1



**Access Point 2: Little Big Econ State Forest Headquarters**  
N: 28.6779 W: -81.1140

**Access Point 1: CR 419 Bridge**  
N: 28.6552 W: -81.1684

- Econlockhatchee River Paddling Trail
- Springs
- Canoe/Kayak Launch
- Restrooms
- Florida Conservation Lands
- Wetlands



# Econlockhatchee River Paddling Trail Map 2



Lake Harney

Lake Proctor Wilderness Area

46

VOLUSIA

**Access Point 3: SR 46 Bridge**  
N: 28.7148 W: -81.0358

Little Big Econ State Forest

SEMINOLE

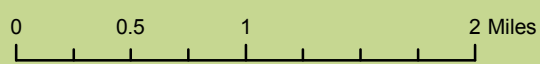
Primitive Camp Zone

28.6741 | -81.0920

Seminole Ranch Conservation Area

Charles H. Bronson State Forest

-  Econlockhatchee River Paddling Trail
-  Group Campsite
-  Canoe/Kayak Launch
-  Florida Conservation Lands
-  Wetlands



# Econlockhatchee River Paddling Trail Trip Planning

**Overview:** Flowing past unmarred forests, including the Little Big Econ State Forest, paddlers can see a diverse array of wildlife including sandhill cranes, bald eagles, ospreys, hawks, wading birds, wood storks, roseate spoonbills, waterfowl, shorebirds, deer, turkey and sometimes black bear. The Muscogee name for the river means “River of Many Mounds,” named for the multitude of Indian mounds found along this waterway. The second largest tributary of the storied St. Johns River, this black water stream is narrow in places and canopied by cypress and sabal palm.

**County:** Seminole

**Nearest towns:** Oviedo, Orlando

**Trip length:** 19 miles

**Mileage:**

1. Mile 0—CR 419 Bridge
2. Mile 8—Snow Hill Road launch at Little Big Econ State Forest Headquarters
3. Mile 19—SR 46 Bridge

\*The provided mileage data is approximate (rounded to the nearest 0.5 mi.)

**Difficulty:** Easy to moderate

**Skill level:** Beginner to intermediate (depending on water levels)

## **Access Points:**

**Access Point 1 Put-in:** CR 419 Bridge

**Nearest town to put-in:** Oviedo

**Miles from put-in:** 2

**Directions to put-in:** From the town of Oviedo, take CR 419 east to the northeast side of the bridge.

**Access Point 2 Put-in:** 1350 Snow Hill Road, Little Big Econ State Forest Headquarters. There is a boardwalk and canoe launch behind the Forestry Office, fee required; gates close at sunset.

**Nearest town to access point:** Oviedo

**Miles from put-in:** 10

**Directions:** From Oviedo travel northeast on CR 426 to Snow Hill Road, turn right (south) and proceed to Little Big Econ State Forest Headquarters.

**Access Point 3 Take-out:** SR 46 Bridge

**Directions to take-out:** From the town of Oviedo travel northeast on CR 426 to the junction of SR 46. Continue east on SR 46 to the parking/launch area on the northwest side of the bridge over the St. John's River

**Driving distance from put-in to take-out:** 13.5 miles

**Topo maps (USGS quads):** Oviedo, Geneva

**Gazeteer page:** 80-81

**Outfitters within 20 miles of trail:**

Seminole Paddle Adventures (Oviedo area)

(407) 925-7896

<http://www.seminole-paddle-adventures.com/>

Adventures in Florida (Orlando)

(407) 924-3375

<http://adventuresinflorida.com/>

A Day Away Outfitters and Kayak Tours (Titusville)

(321) 268-2655

<http://www.adayawaykayaktours.com/>

**Shuttle service offered:** Call outfitters

**USGS link (water level info at Oviedo):**

[http://waterdata.usgs.gov/fl/nwis/uv/?site\\_no=02233484&PARAMeter\\_cd=00065,00060](http://waterdata.usgs.gov/fl/nwis/uv/?site_no=02233484&PARAMeter_cd=00065,00060); flood stage if gage is over 18 feet; may have some snags in upper section below 11 feet.

**Break / Lunch areas:** Little Big Econ State Forest

**Camping options:** Primitive camping allowed in Little Big Econ State Forest.

Contact staff at (407) 971-3500 for permits and fees to camp:

[http://www.floridaforestservice.com/state\\_forests/little\\_big\\_econ.html](http://www.floridaforestservice.com/state_forests/little_big_econ.html) The maps show the locations and gps coordinates for two group campsites for 10 or more campers. These sites also mark the beginning of primitive camping zones for single users or smaller groups on the north side of the river. The first zone is approximately 2.5 river miles long and ends at the Flagler trail bridge across the river. The second zone is approximately 2.7 river miles long and ends at coordinates N28.6828 W81.0632 at the site of an old summer camp building.

**Other lodging:** Nearby lodging is plentiful in Oviedo and Orlando

**Food/Beverage restrictions:** No alcohol in the State Forest

**What to expect on the river:**

**Tidal influence:** None

**Pull-overs:** Possible on the upper stretches

**Low branches:** No

**Narrow water:** No

**Shallow water:** Possible with low water levels

**Strong currents:** Possible with high water levels

**Rocks:** None

**Houses:** Very few

**Shoals:** None

**Tight turns:** None

**Open water:** River widens after entering the St. Johns River

**Springs:** None

**Potable water sources:** None

**Wildlife:** The river supports abundant and diverse wildlife including sandhill cranes, bald eagles, ospreys, hawks, wading birds, wood storks, roseate spoonbill, waterfowl, shorebirds, deer, and turkey

**Natural communities:** Cypress/hardwood swamp, bottomland hardwoods, floodplain forest, freshwater marsh

**Portages:** Possible on upper stretches depending on water levels and storm events

**Swimming:** At your own risk

**Motorboats:** Encountered on lower stretches of the river near the St. Johns River and Lake Harney

**Expect at parking CR 419:**

- **Parking fee:** No
- **Bathrooms:** No
- **Hours of operation (gates close):** N/A
- **Camping:** No
- **Camping fees:** N/A
- **Crowds:** No
- **Boat Ramp:** No
- **Potable water source:** No
- **Canoe/kayak launch:** Access to the river is by walking about 100 meters from the parking area on Northeast side of CR 419 bridge down a grassy easement to the unimproved launch under the bridge

**Expect at parking Snow Hill Road:**

- **Parking fee:** Yes
- **Bathrooms:** Yes
- **Hours of operation (gates close):** daylight hours
- **Camping:** No, but primitive camping allowed with permit in forest along river.
- **Camping fees:** N/A

- **Crowds:** No
- **Boat Ramp:** No
- **Potable water source:** No
- **Canoe/kayak launch:** Yes

**Expect at parking SR 46:**

- **Parking fee:** None
- **Bathrooms:** None
- **Hours of operation (gates close):** No gates
- **Camping:** None
- **Camping fees:** N/A
- **Crowds:** Possible on weekends and holidays
- **Boat Ramp:** Yes
- **Potable water source:** No
- **Canoe/kayak launch:** Floating launch

**Cultural and historical features along the trail:** The Florida National Scenic Trail crosses the river at the Little Big Econ State Forest and merges with the Flagler Trail for a short distance. The Flagler Trail is located along an abandoned railroad corridor, now featuring a new trail bridge over the river, and is a multi-use corridor with some primitive camping sites along the banks. Access this website for more information:

[http://www.seminolecountyfl.gov/parksrec/trails\\_streetscapes/trails\\_flagler.aspx](http://www.seminolecountyfl.gov/parksrec/trails_streetscapes/trails_flagler.aspx)

**Notes:** It is possible to put-in at SR 50 although deadfall may be heavy and numerous portages are required depending on water levels. Check with outfitters for updated water levels and accessibility of the river between SR 50 and CR 419.

When entering the St. John's River, stay on the left side of the wide channel and paddle towards the left side of the bridge for takeout.