

Live Oak Point Acquisition and Enhancement (Walton County)

Live Oak Point encompasses the largest salt marsh on Choctawhatchee Bay and borders one of the bay's largest and most ecologically significant bayous. The NFWFMD proposes to complete acquisition of conservation lands on the Live Oak Peninsula within Walton County. Currently, the NFWFMD owns approximately 457 acres. At least 460 acres of adjacent private lands are considered priority acquisition areas. The State of Florida owns an additional 218 acres of adjacent Section 16 lands, which could also be transferred to NFWFMD ownership and management.

The lands proposed for acquisition consist of high quality salt marsh, together with transitional and upland buffer areas that protect water quality and the quality of the salt marsh habitat. Acquisition by the NFWFMD would protect resources on an ecosystem scale, improve land management, and greatly enhance public access.

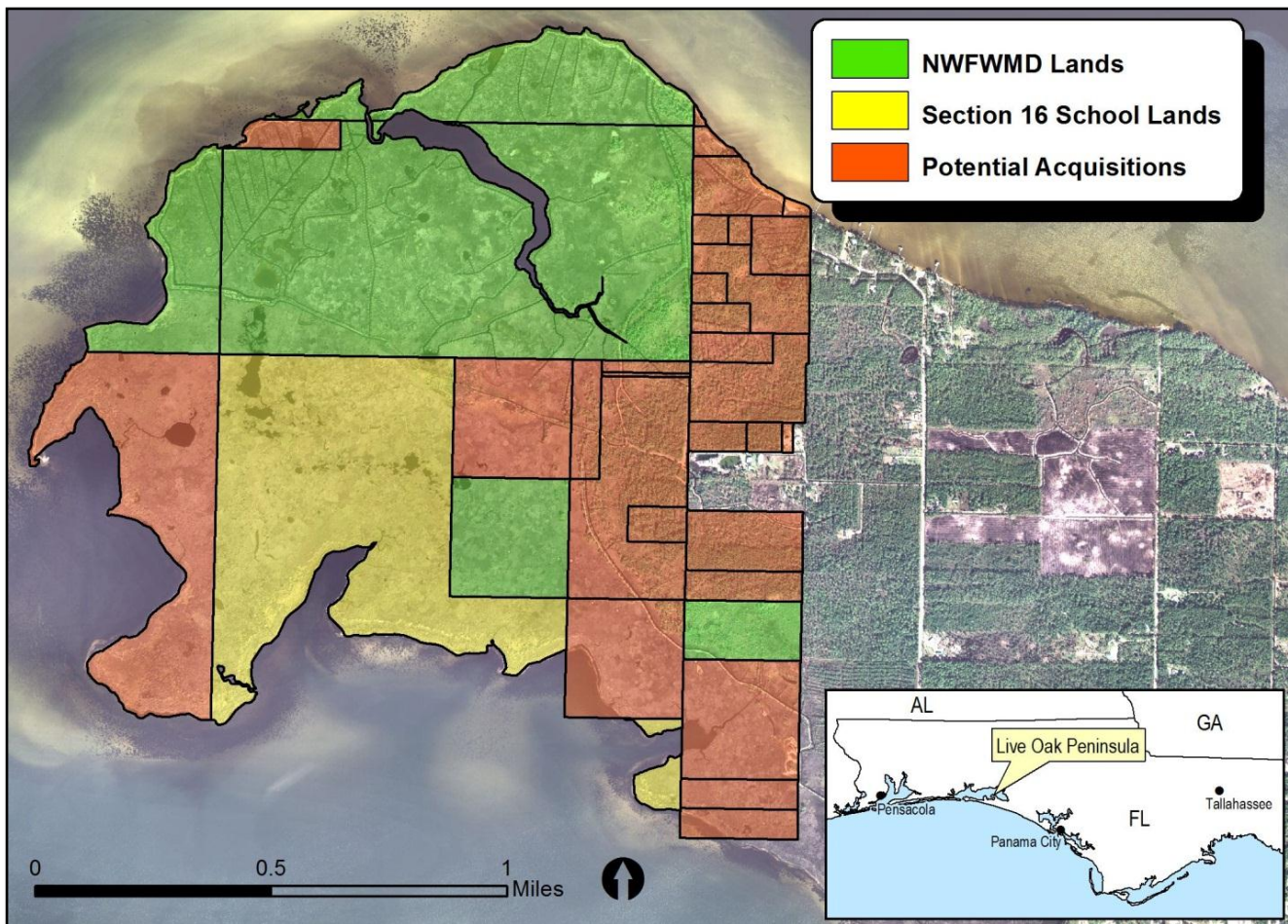


Figure 3. Live Oak Point Peninsula, Walton County

It is estimated that acquisition of the targeted potential acquisitions and Section 16 school lands (Figure 3) could be completed for approximately \$1,380,000. Initial costs for public access improvements and restoration are estimated at \$250,000. Ongoing land management costs are estimated at \$120,000.