

12/10/2014 FDEP Beach Monitoring Report

Survey Area: Escambia County segment FLES2-003 and FLES1-035 (NPS Ft. Pickens).

Team Members:

David Perkinson - FDEP

Jacob Pace - FDEP

Survey Conditions:

During today's survey the skies were partly cloudy, winds were NE @ 10 knots, and the seas in the Gulf were one foot or less. The tide was low and rising, with low tide (-0.29 ft.) at 10:51 AM this morning and high tide (1.12 ft.) at 12:14 AM last night.



Conditions at NPS Ft. Pickens

Survey Summary:

The survey today did not cover the entire segment and therefore represents only a portion of the actual oiling in the segment. Today's survey was conducted to verify the presence of BP MC-252 oil and not to mitigate all observed oil.

Wednesday, December 10th FDEP personnel conducted a post-response monitoring survey in Escambia County Division 1 and 2, segments FLES1-035 and FLES2-003. SRBs were found both in the swash zone and stranded in the ITZ. In segment FLES1-035, there were two Surface Residue Patties found exposed by the wind. One was 18 cm in length and weighed over two lbs.

A total of 5.22 lbs. of BP MC-252 material and 312 SRBs were removed from the beach today by FDEP personnel.

MC-252 Oil Observed

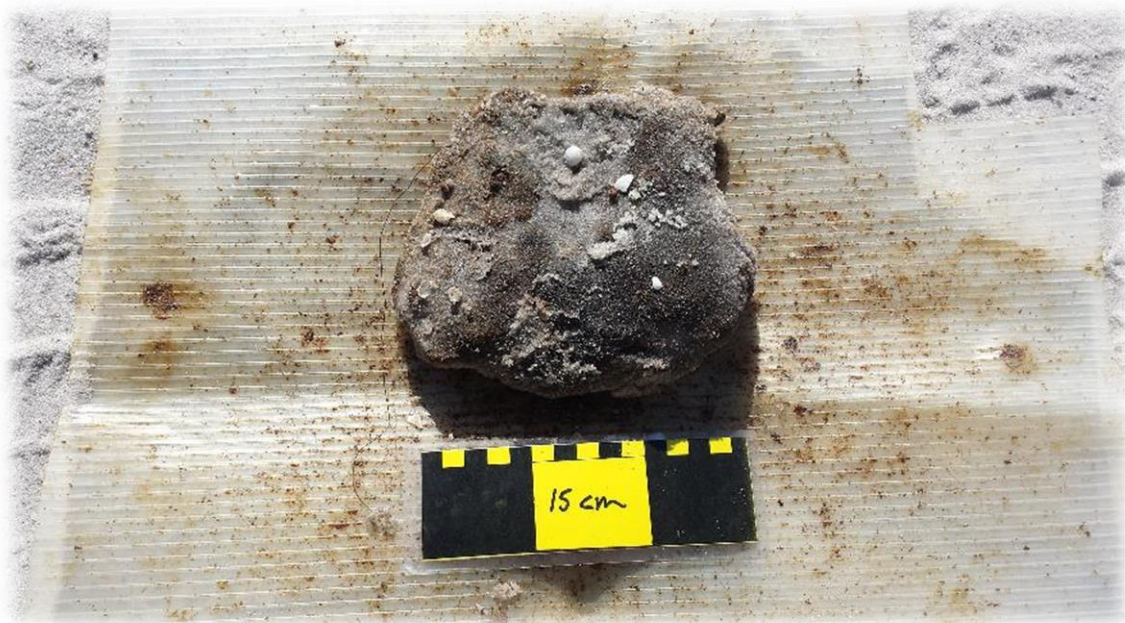
Segment ID	SRBs	SRB Size (cm)	SRPs	SRP Size (cm)	SRB Weight (lb)	NRC Report #	NRC Followup
FLES2-003	165	1.00 - 6.00	0	0	0.99	1103078	TBD
FLES1-035	148	1.00 - 9.00	2	13.00 - 18.00	4.23	1103078	

1. More SRBs remaining in segment after survey.

Monitoring Photos:



SRBs mitigated from FLES2-003



SRP mitigated from FLES1-035

Recommendations:

FLES2-003 and FLES1-035: Segments have been signed out of the response but continue to yield BP MC-252 material. Recommend further periodic monitoring when weather conditions are favorable for product recovery.

ACRONYMS

- | | |
|------------------------------------|---------------------------------------|
| ES - Entire Segment | FLBA - Florida Bay County |
| EZ - Entire Zone | FLOK - Florida Okaloosa County |
| FLES - Florida Escambia County | FLWA - Florida Walton County |
| FLGU - Florida Gulf County | GUIS - Gulf Islands National Seashore |
| FOSC- Federal on Scene Coordinator | ITZ- Intertidal Zone |
| HBR- Hard Black Rubbery Tar Ball | LSTZ - Lower Supra Tidal Zone |
| LITZ- Lower Intertidal Zone | MIT - Mitigated |
| LTZ- Lower Tidal Zone | NAS - Naval Air Station |
| MTZ - Middle Tidal Zone | NOO - No Observable Oil |
| NRC - National Response Center | STZ - Supra Tidal Zone |
| NPS - National Park Service | |