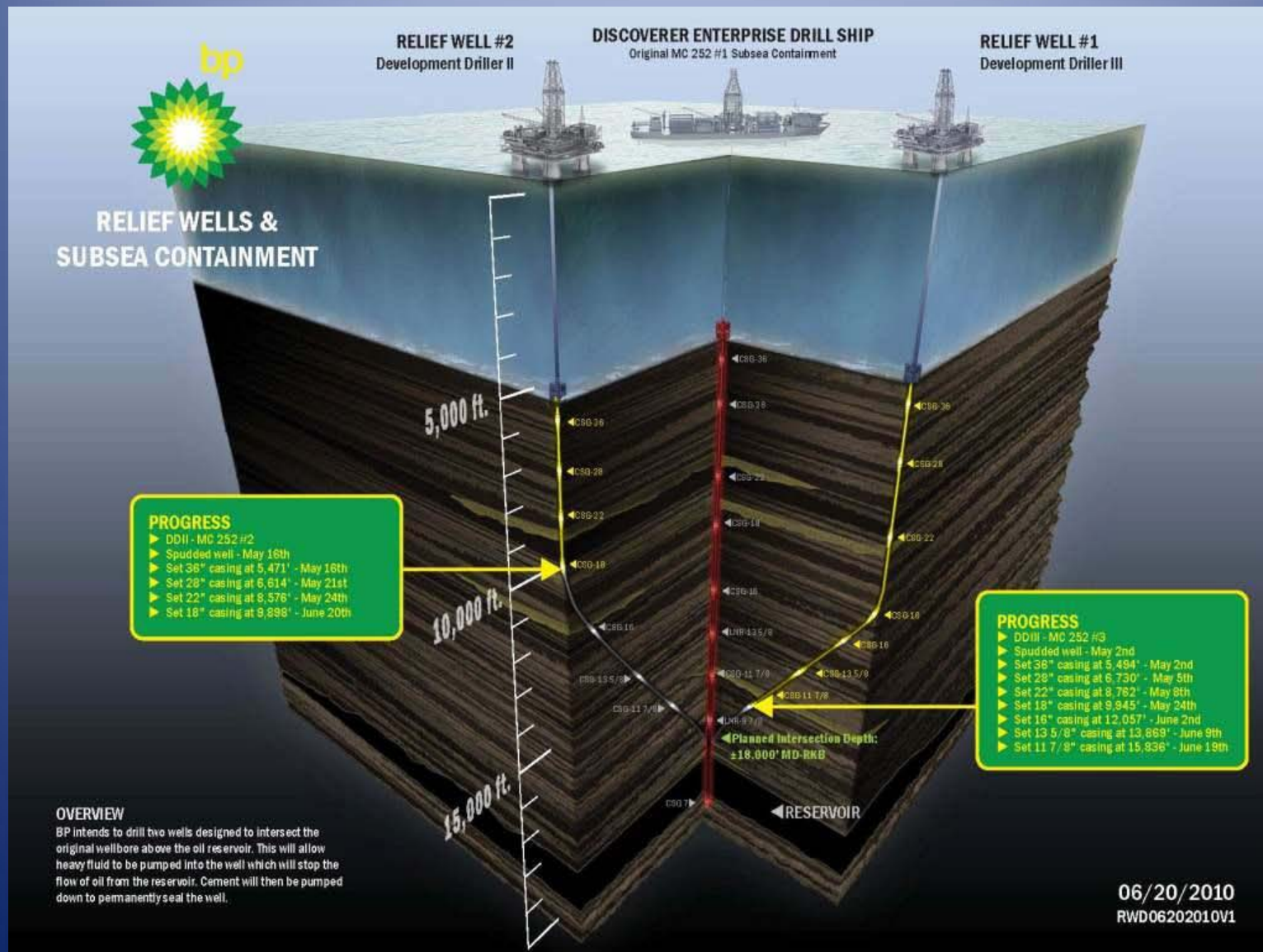


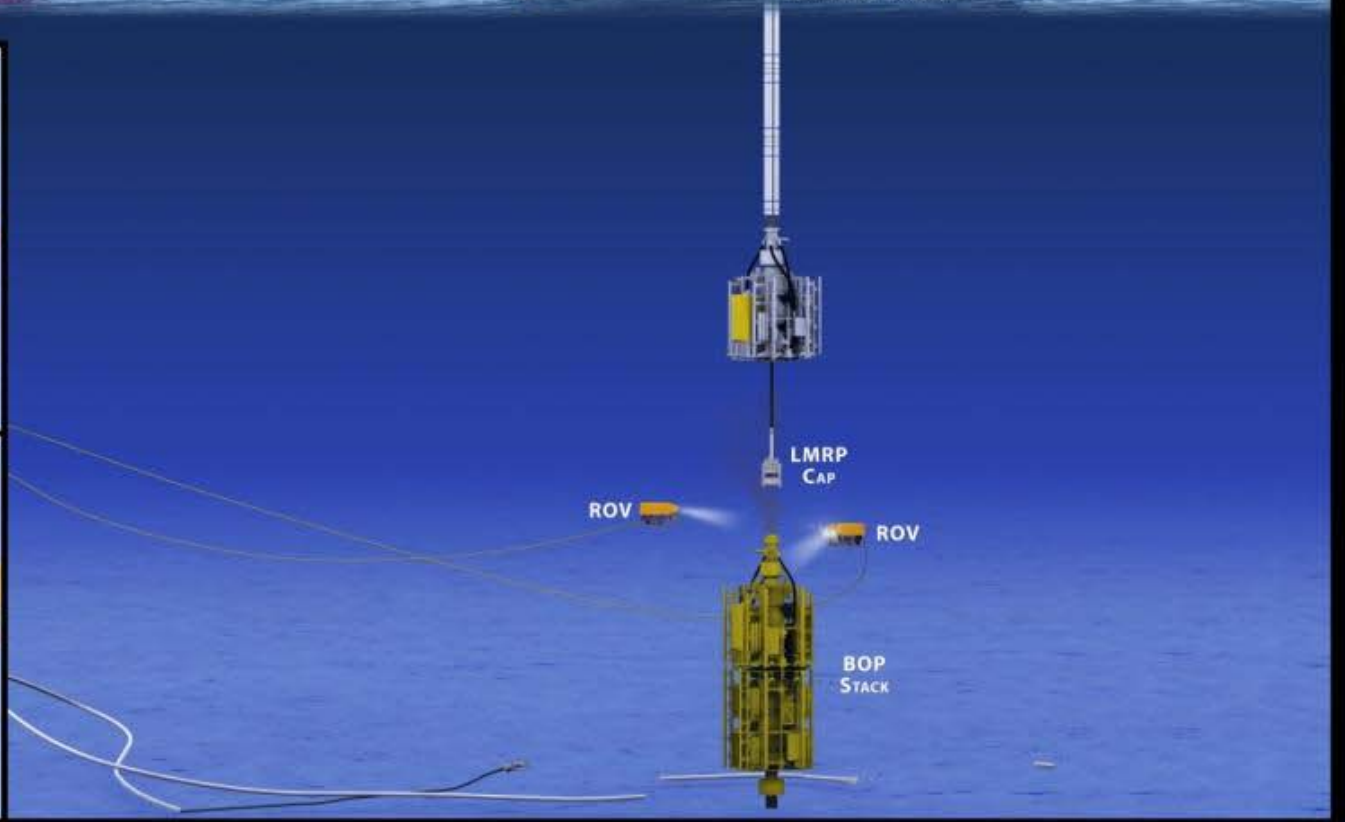
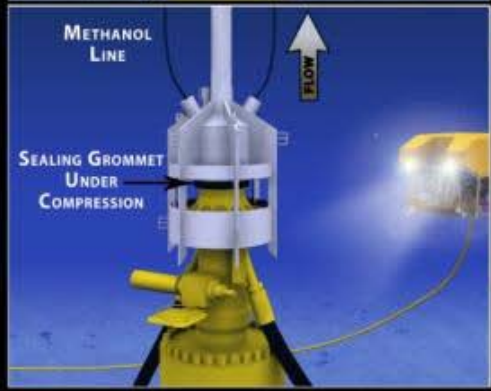
# DEEPWATER HORIZON RESPONSE



**OIL SPILL UPDATE**  
**June 29, 2010**

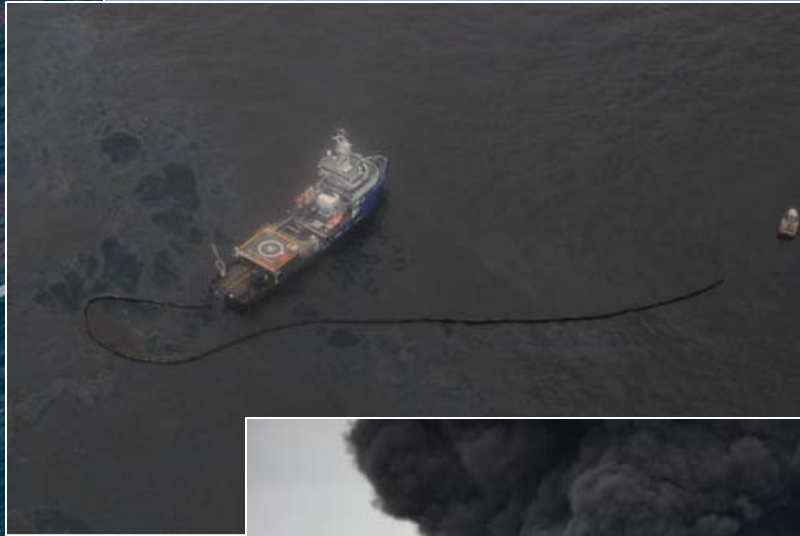
# Relief Well Graphic





CONTAINMENT CONTINGENCY OPTION - LMRP CAP

# Removal Strategies

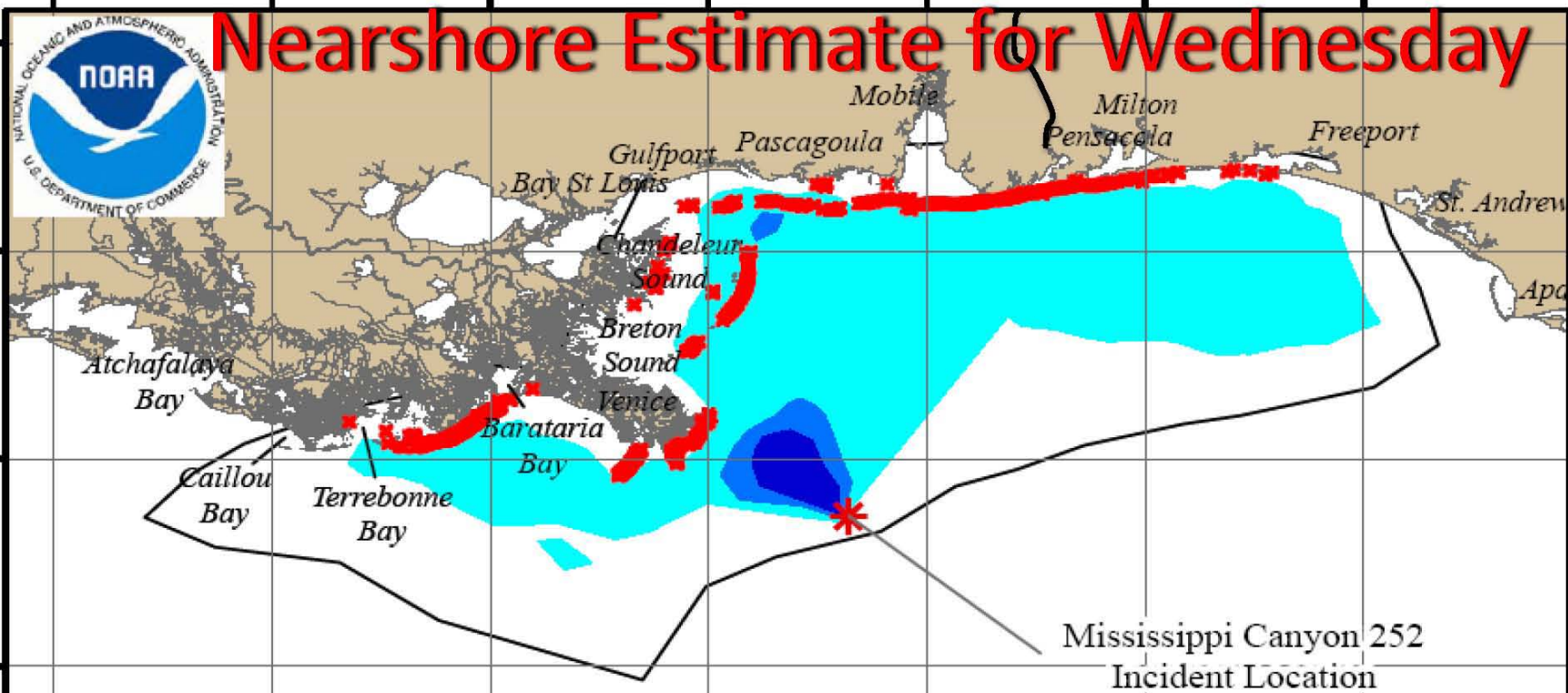


92°0'0"W 91°0'0"W 90°0'0"W 89°0'0"W 88°0'0"W 87°0'0"W 86°0'0"W



# Nearshore Estimate for Wednesday

31°0'0"N  
30°0'0"N  
29°0'0"N  
28°0'0"N  
27°0'0"N  
26°0'0"N

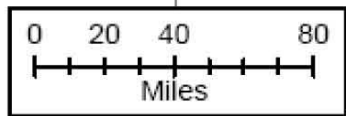


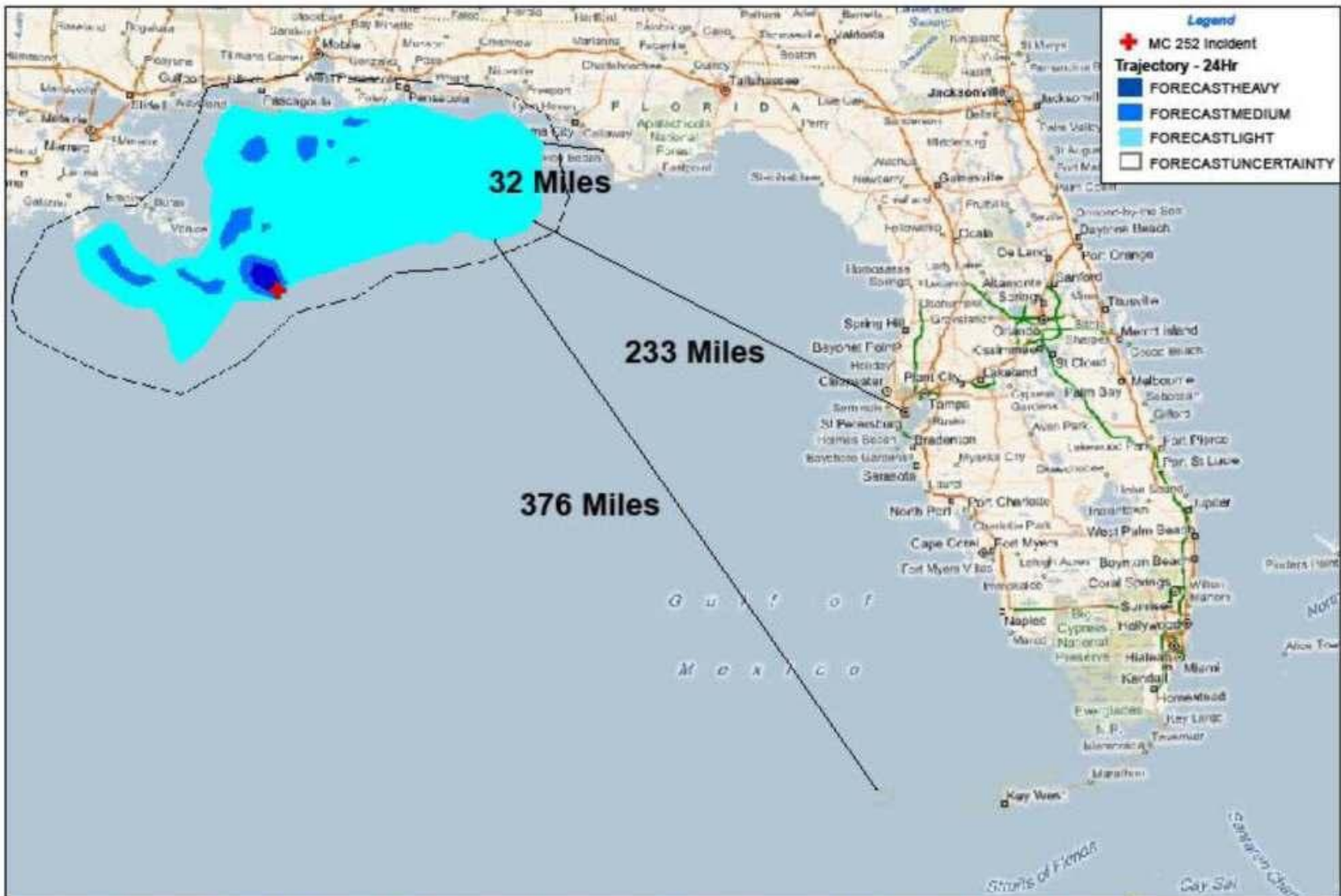
Forecast location for oil on 30-June-10 at 1200 CDT

The offshore forecast has been temporarily stopped due to small amounts of oil offshore, the absence of recent observations confirming significant amounts of oil in offshore areas, and the large separation between the loop current complex and the oil slick. Forecasts will resume if the threat returns.

**Trajectory**

- Uncertainty
- Light
- Medium
- Heavy
- Potential beached oil





# Oil Spill Trajectory - Forecast Monday June 28th

Distances to Florida West Coast



DISCLAIMER: Map is intended to be used as reference only. No warranty for accuracy provided.

# Florida's Actions

- EOC is activated at a Level 1 or Full activation.
- To date, an estimated 382,400 feet of boom has been placed in Florida and an additional 244,150 is staged.
- We have exceeded the proposed coverage of boom outlined in the ACP.

# Supplemental Booming Activities

- Escambia: 20,000 feet *(deployed)*
- Santa Rosa: 12,800 feet *(deployed)*
- Okaloosa: 36,500 feet *(deployed & staged)*
- Bay: 94,461 feet *(staged)*
- Gulf: 11,700 feet *(staged)*
- Franklin: 139,800 feet *(deployed & staged)*
- Wakulla: 71,500 feet *(proposed)*
- Jefferson: 18,835 feet *(proposed)*
- **TOTAL: 316,261 feet**

# Total Florida Booming

- ACP Deployed: 305,900 feet
- ACP Needed: 159,100 feet
- Supplemental Boom Contracted: 464,195 feet
- **TOTAL: 923,145 feet**



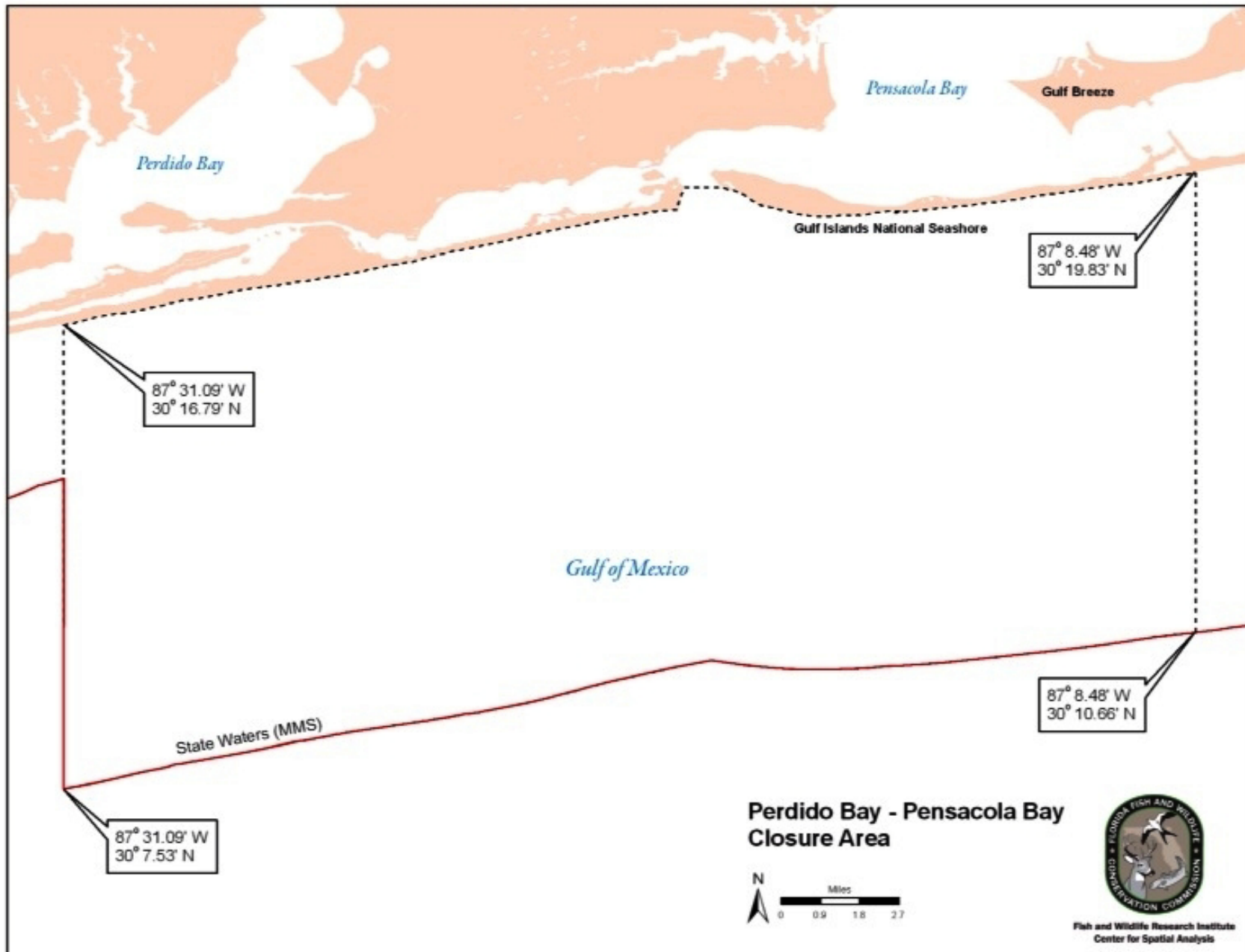
# Fish & Wildlife



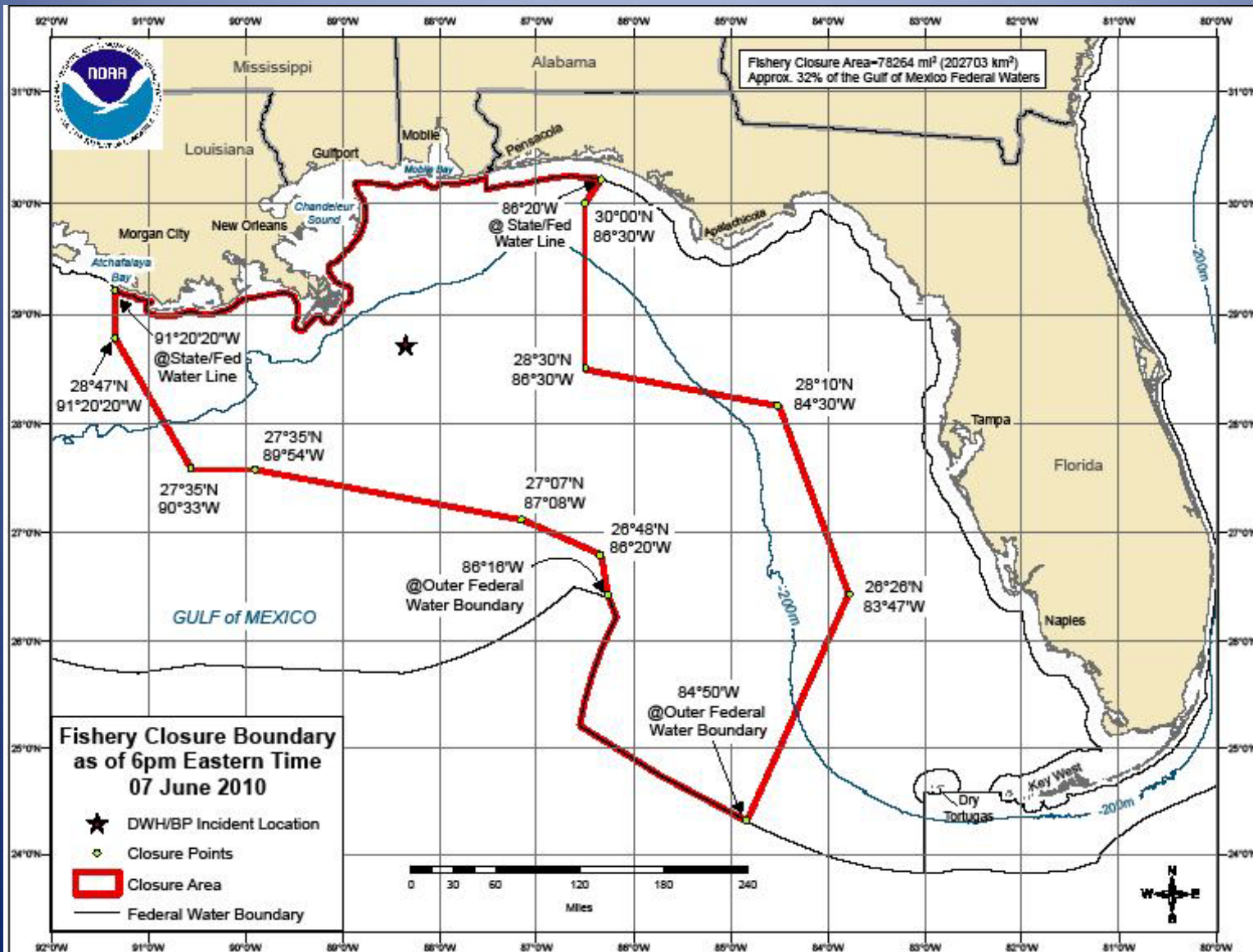
- Daily reconnaissance missions for EOC utilizing aircraft, boats and assisting beach recon teams on ATV's
- Continuing sampling and assessment for fish and wildlife and their habitats, pre- and post-impact
- Maintaining frequent communications with fishing/boating interests and conservation community
- Assisting with development of response plans for oiled, injured, dead wildlife
- Producing best management practice guidelines and protective signage for responders

# State Waters Closure

- All harvest and possession (commercial and recreational) of saltwater fish and marine invertebrates other than oysters, clams and mussels is prohibited in all state waters seaward of the COLREGS demarcation line.
  - Encompassing an area from the Florida-Alabama border eastward to the Pensacola Beach water tower.
- Recreational catch and release, which does not lead to harvest or possession of any saltwater fish, is not prohibited.



# NOAA Fisheries Closure



**QUESTIONS?**