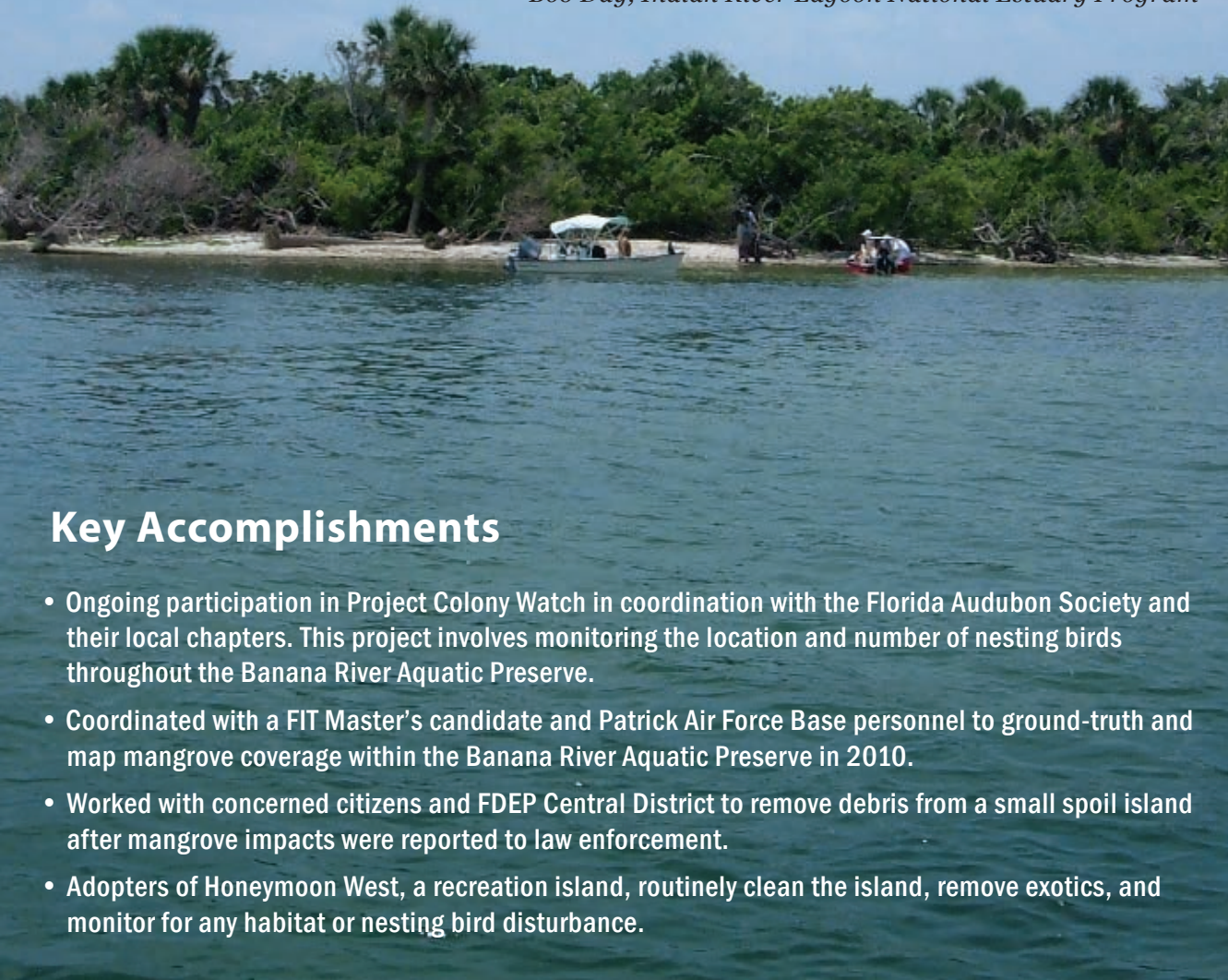


Banana River

AQUATIC PRESERVE

"Although located in an urban area, the Banana River Aquatic Preserve offers many opportunities to view and experience the estuarine resources of the Indian River Lagoon system. Paddling the mangrove-lined backwaters of the Thousand Islands in Cocoa Beach or walking the trails along the marsh at Ulumay Wildlife Sanctuary adjacent to Sykes Creek are just a few of the opportunities available to visit this natural treasure. "

Bob Day, Indian River Lagoon National Estuary Program



Key Accomplishments

- Ongoing participation in Project Colony Watch in coordination with the Florida Audubon Society and their local chapters. This project involves monitoring the location and number of nesting birds throughout the Banana River Aquatic Preserve.
- Coordinated with a FIT Master's candidate and Patrick Air Force Base personnel to ground-truth and map mangrove coverage within the Banana River Aquatic Preserve in 2010.
- Worked with concerned citizens and FDEP Central District to remove debris from a small spoil island after mangrove impacts were reported to law enforcement.
- Adopters of Honeymoon West, a recreation island, routinely clean the island, remove exotics, and monitor for any habitat or nesting bird disturbance.



Heavy nesting activity on Honeymoon East.

Project Spotlight

Spoil Island Bird Rookery Monitoring

Banana River Aquatic Preserve is an important home and nursery for an extensive array of fish and wildlife. Spoil islands within the preserve act as a haven for many coastal bird species that have been displaced from nesting sites due to habitat destruction.

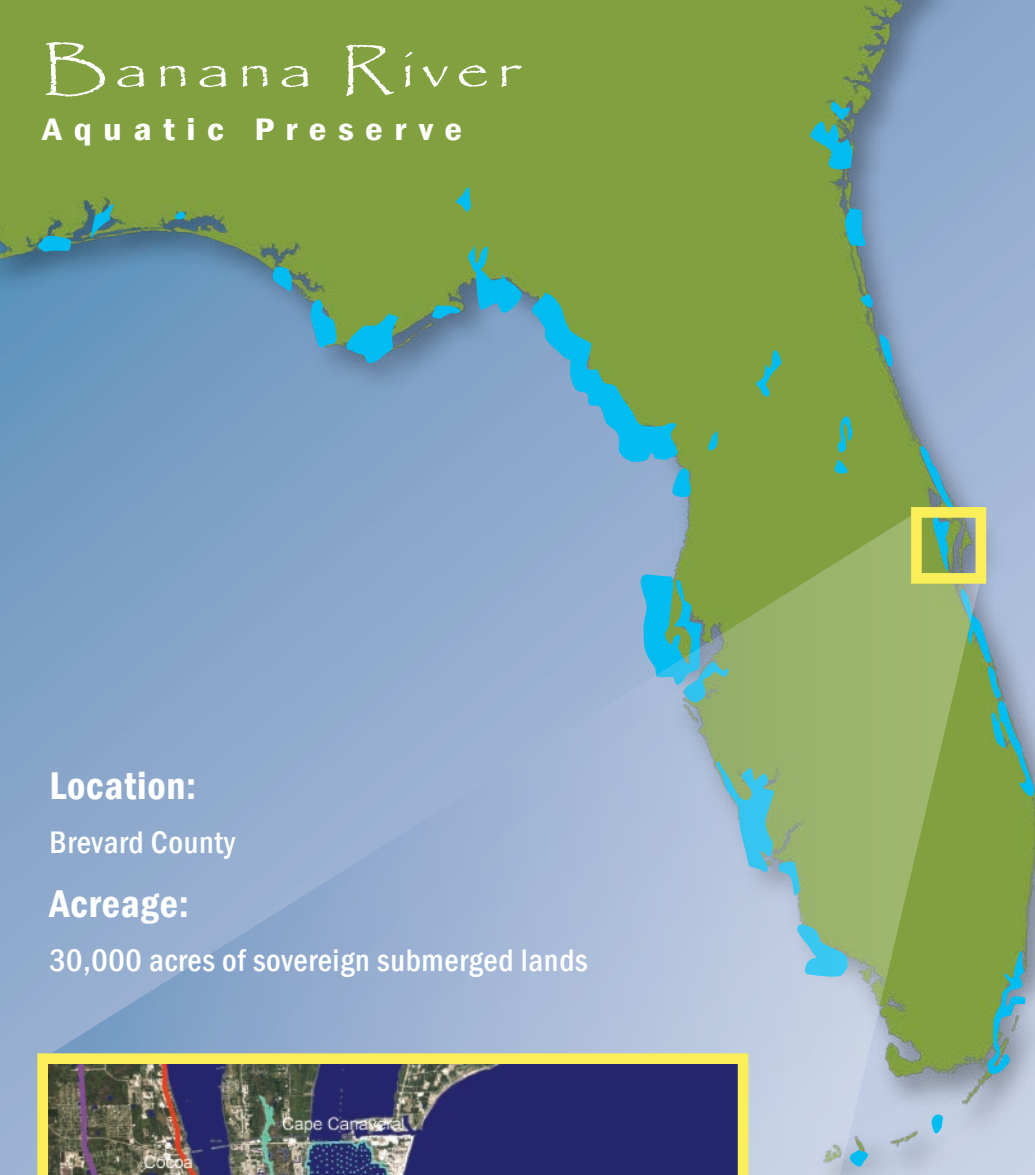


White Pelican in Sykes Creek

Honeymoon East and West are natural islands that were spoiled upon during dredging activities of the 1940s and 1950s. Many bird species, including brown pelican, great egret, snowy egret, reddish egret and roseate spoonbill have been observed nesting on these islands. Locations throughout the aquatic preserve are monitored each breeding season to record species and number of birds nesting. In previous years, over 200

nesting pairs were observed on Honeymoon East. Flight line surveys reported over 1000 birds flying to and from the island at dawn, when movement is most frequent. Trash often washes up on spoil islands, where birds may become entangled or mistakenly ingest the debris. Indian River Lagoon Aquatic Preserve Staff with the help of volunteers were able to remove debris and place signs before nesting season to prevent disturbance to birds.

Banana River Aquatic Preserve

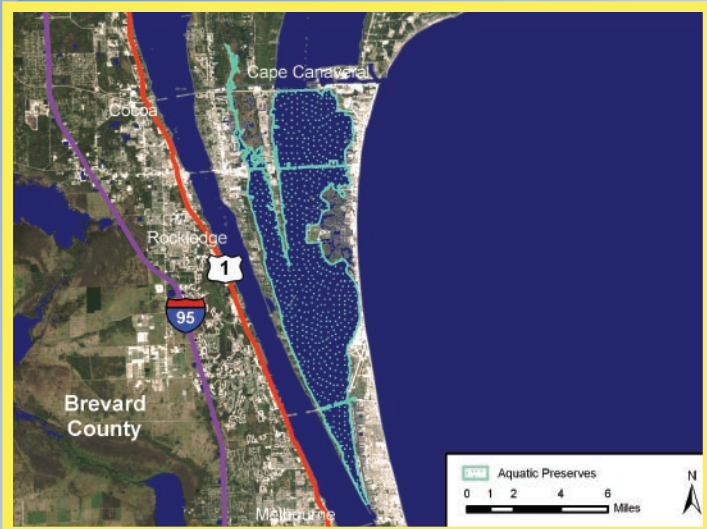


Location:

Brevard County

Acreage:

30,000 acres of sovereign submerged lands



Local Contact:

Laura Herren
 Aquatic Preserve Manager
 3300 Lewis Street
 Ft. Pierce, FL 34981
www.aquaticpreserves.org
www.spoilislandproject.org



Large flock of white pelicans in the Banana River



Kayakers enjoying the waters of the preserve



Diamondback terrapin

Aquatic Preserve Facts:

- Sykes Creek is the main tributary within the Banana River Aquatic Preserve.
- The most important spring habitat (300-500 individuals/survey day) for the east coast population of manatees has been the northern Banana River (2001, Florida Manatee Recovery Plan). Large numbers of manatees use the Banana River almost year-round.
- The Banana River supports the largest pelican rookery on the Atlantic Coast, a significant population of alligators, and diamondback terrapin turtles.
- Favored by recreational fisherman, the shallow seagrass and mangrove based ecosystem supports large gamefish.
- Other public uses include boating, fishing, sail boarding, kayaking, duck hunting and bird watching.



Islands in the Banana River Aquatic Preserve



A publication funded in part by the Florida Department of Environmental Protection, Florida Coastal Management Program, pursuant to National Oceanic and Atmospheric Administration Award No. NA04N0S4190035. The views expressed herein are those of the authors and do not necessarily reflect the view of the State of Florida, NOAA, or any of its sub-agencies.