

CORAL DISEASES

http://ourworld.compuserve.com/homepages/mccarty_and_pters/c-intro.htm



Bleaching

= loss of zooxanthellae due to some stress to the colony





White Plague

“stress related necrosis”



White-band disease
=bleaching in branching
corals





Rapid wasting - the attack of the rabid parrot fish

Dark spot disease in *Siderastrea siderea*



Black-band disease - black band is *Phoromidium corallyticum*, a filamentous cyanobacterium; death in the coral tissue is caused by oxygen depletion/hydrogen sulfide exposure.



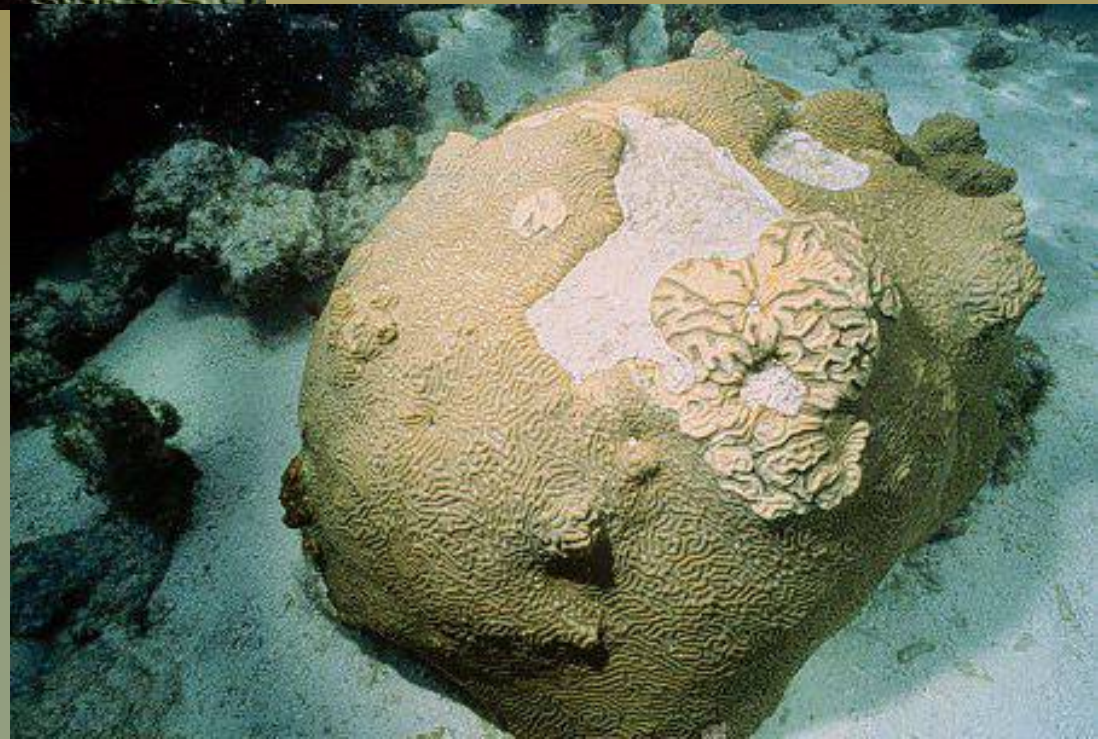
Yellow-blotch - caused unknown





Skeletal Anomolies of Hard Coral

**Coral hyperplasms =
accelerated growth
patches on coral surface**



ADDITIONAL RECOMMENDED READING

http://ourworld.compuserve.com/homepages/mccarty_and_pters/c-intro.htm

Peters, E.C., and H.B. McCarty. 1996. Carbonate crisis? *Geotimes* 41(4):20-23.