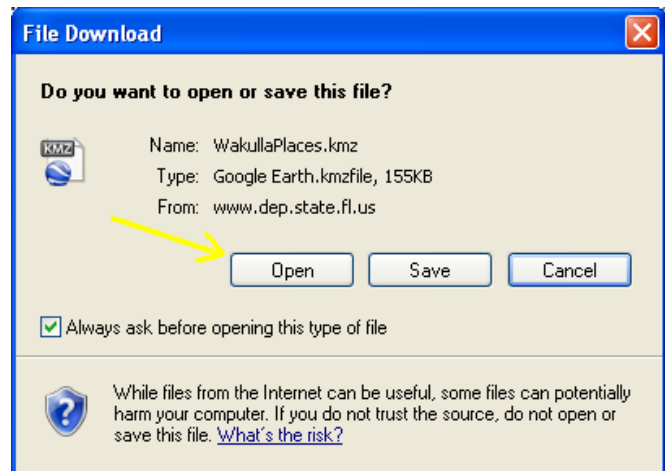
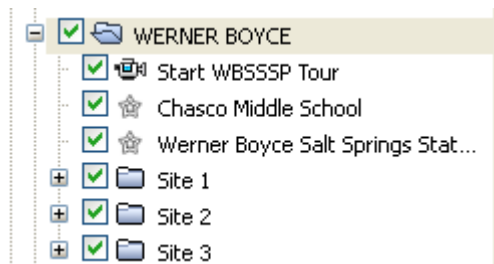



Google Earth® Tour Instructions

1. Once you have clicked on the link to the Google Earth® file, a dialog box will appear; click on the “open” button
2. The Google Earth® program will open automatically, and load all of the files associated with the tour.



3. On the left hand side of the screen, you will see a file titled “WERNER BOYCE.kmz”, click on the + sign next to the folder to expand it.
4. Double click on the “Start WBSSSP Tour” and the tour will start automatically.



5. You can easily pause the tour if you need more time to read the descriptions or view the pictures.
6. To pause the tour, simply press the pause button at the bottom left of the screen. 
7. Should you have any trouble with this tour please contact us and we will be more than happy to walk you through it.
8. Enjoy!