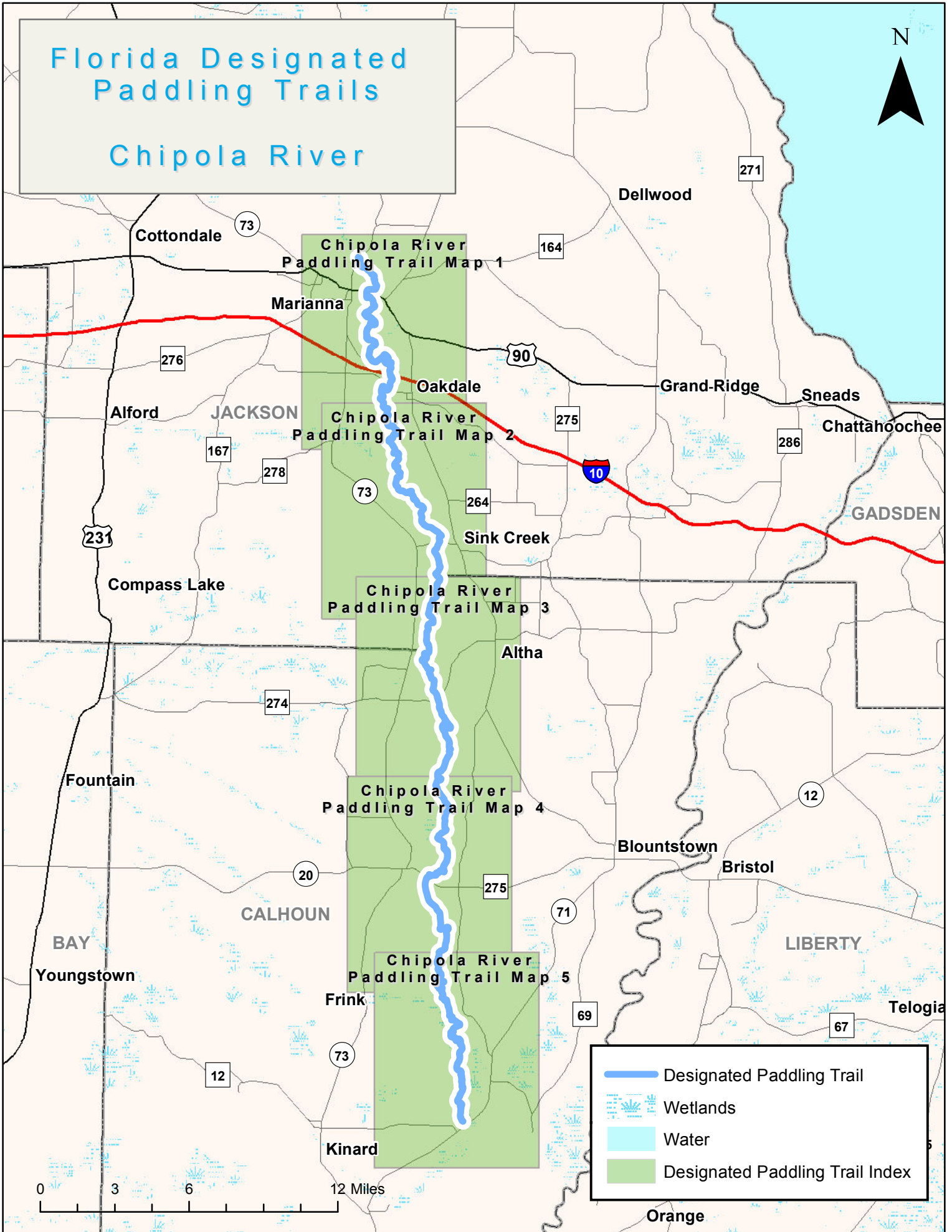
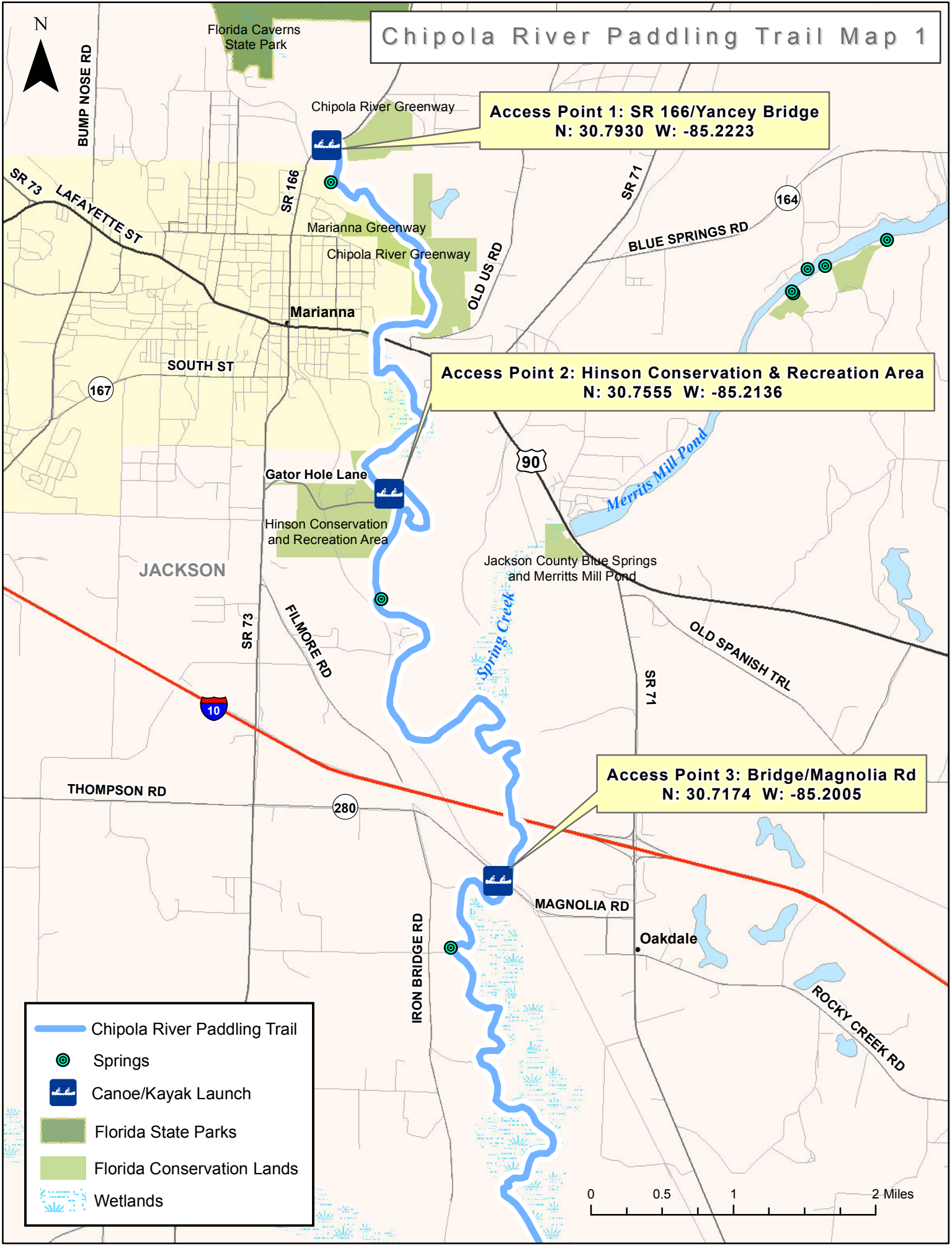


# Florida Designated Paddling Trails

## Chipola River



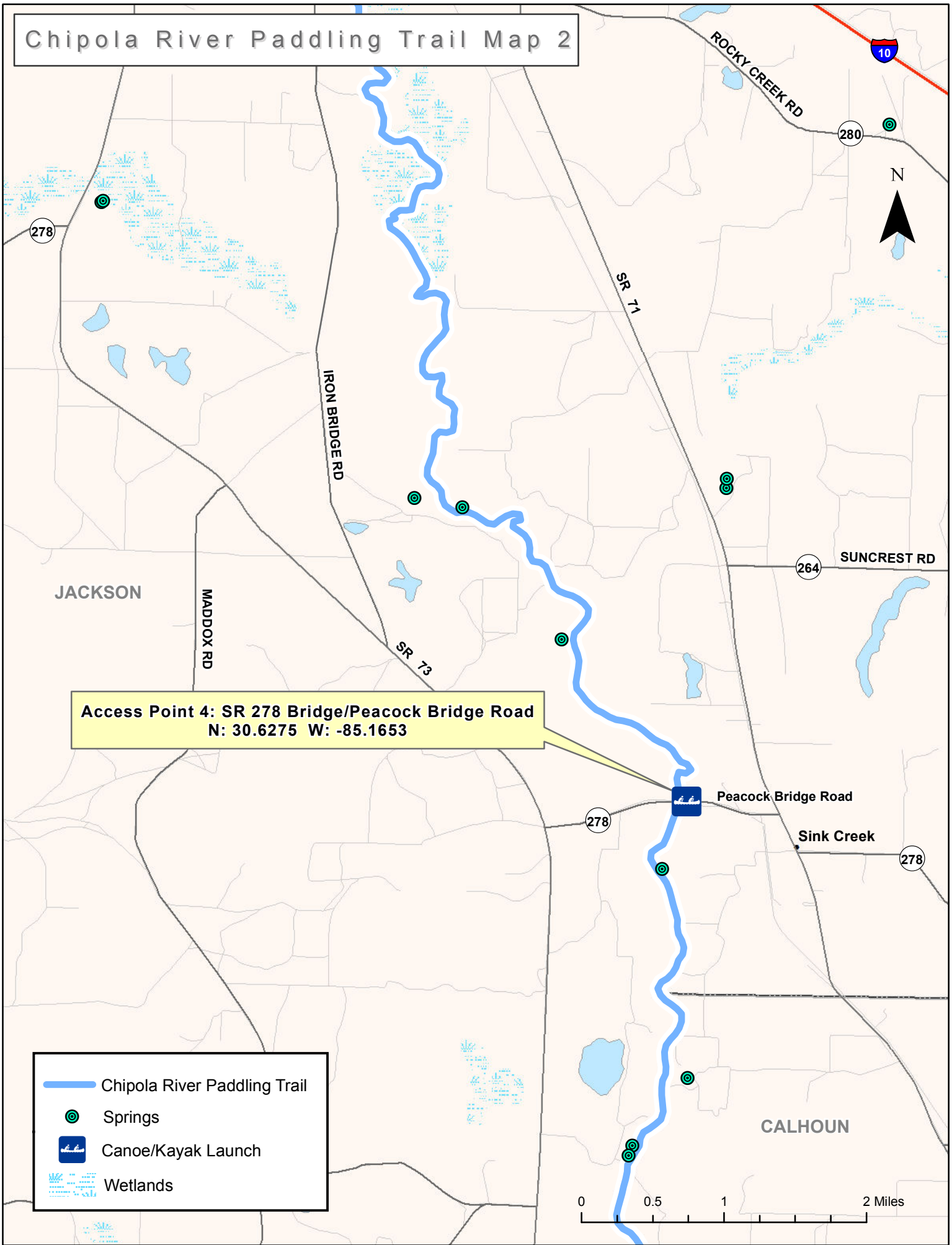
# Chipola River Paddling Trail Map 1



- Chipola River Paddling Trail
- Springs
- Canoe/Kayak Launch
- Florida State Parks
- Florida Conservation Lands
- Wetlands

0 0.5 1 2 Miles

# Chipola River Paddling Trail Map 2

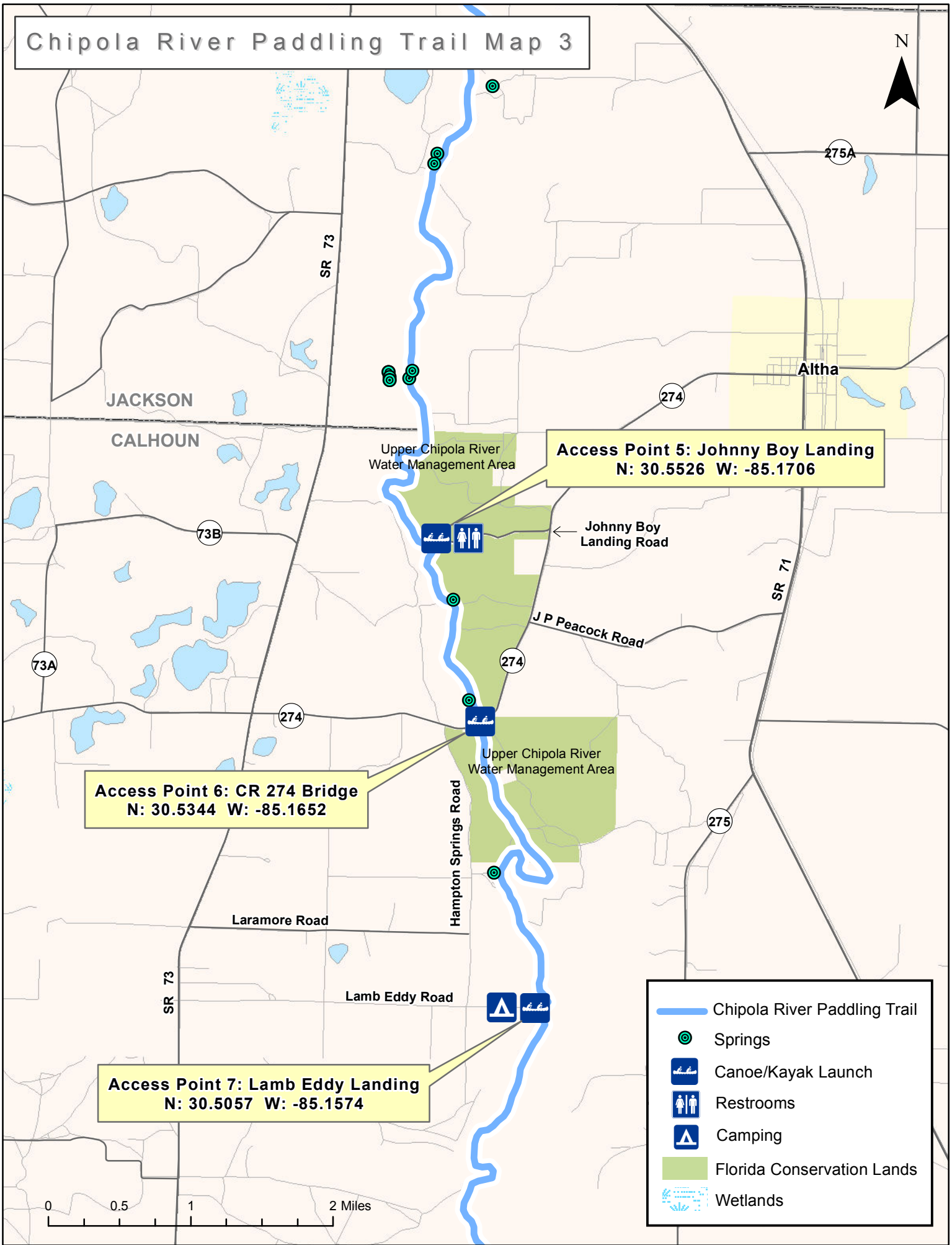


**Access Point 4: SR 278 Bridge/Peacock Bridge Road**  
N: 30.6275 W: -85.1653

-  Chipola River Paddling Trail
-  Springs
-  Canoe/Kayak Launch
-  Wetlands



# Chipola River Paddling Trail Map 3



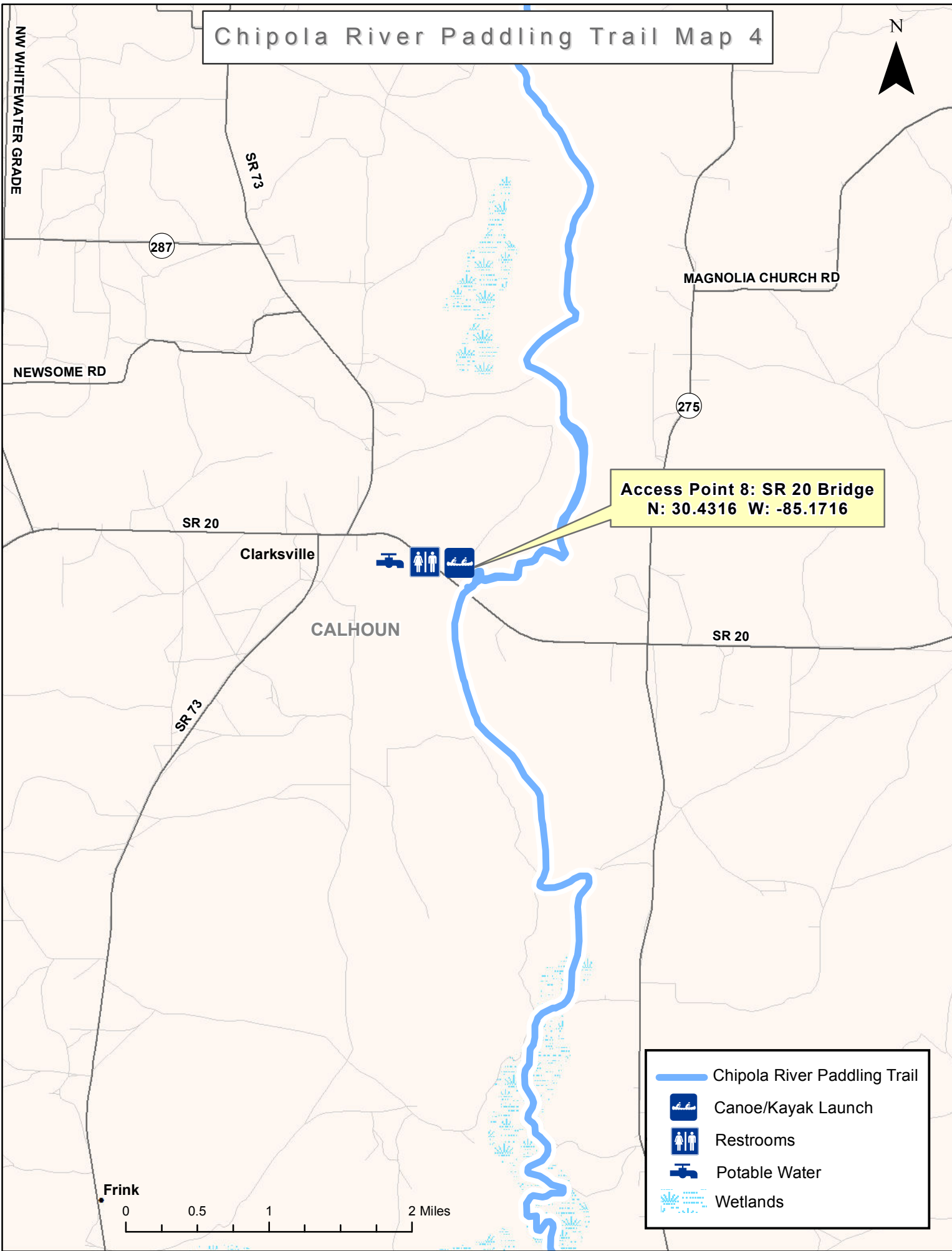
**Access Point 6: CR 274 Bridge**  
N: 30.5344 W: -85.1652

**Access Point 5: Johnny Boy Landing**  
N: 30.5526 W: -85.1706






**Access Point 7: Lamb Eddy Landing**  
N: 30.5057 W: -85.1574

- Chipola River Paddling Trail
- Springs
- Canoe/Kayak Launch
- Restrooms
- Camping
- Florida Conservation Lands
- Wetlands

# Chipola River Paddling Trail Map 4



**Access Point 8: SR 20 Bridge**  
N: 30.4316 W: -85.1716

-  Chipola River Paddling Trail
-  Canoe/Kayak Launch
-  Restrooms
-  Potable Water
-  Wetlands



# Chipola River Paddling Trail Map 5



**Access Point 9: Jehue Landing**  
N: 30.3571 W: -85.1568



Jehue Landing Road

SW CARLOS PEAVY RD

SR 71

275

SW MCCLELLAN FARM RD

**Access Point 10: SR 71 Bridge/Scott's Ferry**  
N: 30.2877 W: -85.1443



SR 71

SE CD CLARK RD

392

SE ANDERSON RD

SE IOLA RD

- Chipola River Paddling Trail
- Canoe/Kayak Launch
- Camping
- Restrooms
- Potable Water
- Wetlands



# Chipola River Paddling Trail

**Overview:** Fed by numerous springs, this scenic 51-mile paddling trail flows through river swamps and hardwood forests. Limestone bluffs and caves, visible from the water, add a unique touch. Several shoals are present, especially during low water, and should be attempted by intermediate paddlers. Paddlers should take note of the shoal known as "Look and Tremble Falls" below the State Road 274 Bridge and portage if necessary.

**Counties:** Calhoun, Jackson

**Nearest Towns:** Marianna, Blountstown, Clarksville, Altha

**Trip length:** 51 miles

**Mileage:**

1. Mile 0—SR 166/Yancey Bridge
2. Mile 4.5—Hinson Conservation and Recreation Area
3. Mile 10—SR 280 Bridge/Magnolia Road
4. Mile 20—SR 278 Bridge/Peacock Bridge Road
5. Mile 26.5—Johnny Boy Landing
6. Mile 28—CR 274 Bridge
7. Mile 31—Lamb Eddy Landing
8. Mile 38—SR 20 Bridge
9. Mile 44—Jehue Landing
10. Mile 51—SR 71 Bridge at Scott's Ferry

\*\*The provided mileage data is approximate (rounded to the nearest 0.5 mi).

**Difficulty:** Easy to moderate

**Skill level:** Beginner to intermediate

## **Access Points:**

### **Access Point 1 Put-in: SR 166/Yancey Bridge**

**Nearest town to access point:** Marianna

**Miles from access point:** 1

**Directions to access point:** From I-10 travel north on SR 71, turn left (west) on US 90, continue to the town center of Marianna, turn right (north) on SR 166 (follow signs to Florida Caverns State Park); access is a small roadside park on the southwest side of the Yancey Bridge crossing the Chipola River.

### **Access Point 2 Put-in: Hinson Conservation and Recreation Area**

**Nearest town to access point:** Marianna

**Miles from access point:** 2

**Directions to access point:** From US 90 in Marianna, take SR 73 South (S Jefferson St.) about 1.2 miles. Turn left on Gator Hole Lane, which leads to the park and the launch in about a mile. Signs mark the way. There is no exit for SR 73 from the Interstate, so take either the SR 71 or SR 276 exits to US 90 in Marianna. Area makes for a great rest stop with picnic tables on high banks and land trails.

### **Access Point 3 Put-in: SR 280/Magnolia Road Bridge**

**Nearest town to access point:** Marianna

**Miles from access point:** 4.5

**Directions to access point:** From US 90 or I-10, exit on SR 71 and travel south, (from the I-10 exit it is only 0.5 miles south on SR 71), turn right on Magnolia Rd and travel about 1.5 miles, and look for boat ramp on the left, just after the bridge.

**Access Point 4 Put-in: CR 278/Peacock Bridge Road**

**Nearest town to access point:** Altha                      **Miles from access point:** 5

**Directions to access point:** From US 90 or I-10, exit on SR 71 and travel south to CR 278 (about 7 miles south of I-10 exit). Turn right on CR 278 and proceed less than a mile to the boat landing on the left side of the road just before the bridge.

**Access Point 5 Put-in Johnny Boy Landing**

**Nearest town to access point:** Altha                      **Miles from access point:** 3

**Directions to access point:** From US 90 Or I-10, exit on SR 71 and travel south to CR 274 (about 11 miles south of I-10 exit). Turn right on CR 274 in Altha and travel west 2.3 miles. Look for dirt road (Johnny Boy Landing Road) and boat ramp sign on the right, follow less than a mile to the boat ramp.

**Access Point 6 Put-in: CR 274 Bridge**

**Nearest town to access point:** Altha                      **Miles from access point:** 4

**Directions to access point:** From U.S. 90 Or I-10, exit on SR 71 and travel south to CR 274 (about 11 miles south of I-10 exit). Turn right on CR 274 in Altha and travel west about 3.8 miles. Primitive (steep and rocky) launch areas are on either side of the bridge near the base. Parking and picnic tables are on both sides of the bridge on side roads on south side.

**Access Point 7 Put-in: Lamb Eddy Landing**

**Nearest town to access point:** Altha                      **Miles from access point:** 6

**Directions to access point:** From US 90 Or I-10, exit on SR 71 and travel south to CR 274 (about 11 miles south of I-10 exit). Turn right on CR 274 in Altha and travel west to bridge about 3.8 miles. Cross bridge and turn left onto Hamilton Springs Road. Travel about 2 miles and turn left onto Lamb Eddy Road and follow about a half mile to ramp. All roads are paved.

From SR 20, drive west of the Chipola River Bridge about 1 mile and take a right onto SR 73. Drive about 6 miles and look for the Boat Ramp sign on the right. The road is NW Laramore Road and is a paved road which dead-ends at Hamilton Springs Road after about 2 miles. Turn right and drive about a half mile and Lamb Eddy Road is on the left. Follow about a half mile to the ramp.

**Access Point 8 Put-in: SR 20 Bridge**

**Nearest town to access point:** Clarksville                      **Miles from access point:** 1

**Directions to access point:** From US 90 Or I-10, exit on SR 71 and travel south to CR 275, (about 14 miles south of the I-10 exit). Continue about 7 miles to SR 20, turn west and proceed about 1.3 miles to the small park and boat ramp on the northwest side of the bridge

**Access Point 9 Put-in: Jehue Landing**

**Nearest town to access point:** Clarksville                      **Miles from access point:** 8

**Directions to access point:** From US 90 or I-10, exit on SR 71 and travel south to CR 275, (about 14 miles south of the I-10 exit). Bear right on CR 275 and continue about 13 miles. Turn right on Jehue Landing Road just past Abe Springs. Continue to landing about .5 mile on unpaved road.

From Clarksville, travel 2 miles east on SR 20 and turn south on CR 275. Travel about 5.5 miles and turn right on Jehue Landing Road just past Abe Springs. Continue to landing about .5 mile on unpaved road.

**Access Point 10 Take-out: SR 71 Bridge/Scott's Ferry**

**Nearest towns to access point:** Blountstown, Clarksville, Wewahitchka **Miles from access point:** 13

**Directions to access point:** From US 90 or I-10, exit on SR 71 and travel south to CR 275, (about 14 miles south of the I-10 exit). Bear right on CR 275 and continue to intersection to reconnect with SR 71 (about 15 miles). Turn right (south) and proceed about 3 miles and look for access on northeast side of bridge (private ramp with fee).

**Driving distance from SR 166 put-in in Marianna to SR 71 Scotts Ferry take-out:** About 37 miles

**Topo maps (USGS quads):** Marianna, Oakdale, Altha West, Clarksville, Frink, Dead Lake, Wewahitchka.

**Gazeteer page:** 32 & 48

**Outfitters within 20 miles of trail:**

Bear Paw Adventures, <http://www.bearpawescape.com/bearpaw.html>  
2100 Bear Paw Lane  
Marianna, FL 32448  
(850) 482-4948

Scott's Ferry General Store and Campground  
6648 State Road SR71 S  
Blountstown, FL 32424  
(850) 674-2900

Canoe rentals are also available within Florida Caverns State Park,  
<http://floridastateparks.org/floridacaverns/default.cfm>

**Shuttle service offered:** Contact outfitters

**USGS link (water level info):**

<http://waterdata.usgs.gov/fl/nwis/uv?02359000>

**Break / Lunch areas:** Small wayside parks at many of the boat ramps

**Camping options:** Florida Caverns State Park and Scott's Ferry Campground offer camping for a fee. Finding camping sites along the river is challenging and many areas are posted with 'no trespassing' signs. There are very few sandbars along the river.

Florida Caverns State Park, <http://www.floridastateparks.org/floridacaverns/>.  
3345 Caverns Road  
Marianna, FL 32446  
(850) 482-9599 or (850) 482-1228

Scott's Ferry General Store and Campground  
6648 State Road 71 S  
Blountstown, FL 32424  
(850) 674-2900

**Other lodging:**

Marianna has numerous lodging options: <http://www.jacksoncountytcd.com/>.

Calhoun County also offers lodging, and there are two motels in Blountstown not listed on this site: <http://www.calhounco.org/businesses.cfm?category=Accommodations>. Cabin rentals are also available at Scott's Ferry.

**Food/Beverage restrictions:** No glass containers or styrofoam are allowed on Spring Creek, a popular spring-fed tributary of the Chipola near Marianna.

**What to expect on the river:**

**Tidal influence:** none

**Pull-overs:** none

**Low branches:** none

**Narrow water:** none

**Shallow water:** the river may be shallow depending on rainfall

**Strong currents:** Possible with high water levels, average current is 3-4 mph

**Rocks:** Numerous large limestone rocks present just below surface of water

**Houses:** Few residences near Marianna; limited number along the river

**Shoals:** Numerous shoals present, some may require scouting prior to running depending on water levels. "Look & Tremble" rapids is just below the SR 274 bridge and may be a simple riffle in the water when levels are higher or may classify as a Class I rapid when water is lower. Stay to the east side of the river during low water or portage if necessary.

**Tight turns:** None

**Open water:** None

**Springs:** The rivershed boasts 63 fresh water springs, the largest number of any in Northwest Florida. To learn more, log onto: <http://www.nwfwmd.state.fl.us/recreation/chipolariver.html>.

**Potable water sources:** Florida Caverns State Park, Bear Paw Outfitters

**Wildlife:** The Florida Panhandle is one of the nation's six "biological hot spots," which means it has many rare species, and many of these rare species are found only in small areas of the nearby Apalachicola River and Chipola River watershed. Access this website for more information: [http://www.fnai.org/ARROW/almanac/biology/biology\\_index.cfm](http://www.fnai.org/ARROW/almanac/biology/biology_index.cfm)

Bird life is abundant and fishing is good with bass, bream, and catfish present among other species. Turtles, alligators, and deer are the most common animals seen.

**Natural communities:** Wildflowers are profuse along the river in the spring and include native azaleas, fringe-tree, and cardinal flower among many others. The upper stretches of the river have fascinating limestone formations with high banks and a mix of mature hardwood trees, the river becomes broader and lined with floodplain forest on the lower portion.

**Portages:** Possible on upper stretches after storm events or low water levels

**Swimming:** At your own risk; observe 'No Trespassing' signs posted at springs

**Motorboats:** Small fishing boats may be encountered on the lower portion of the river and near boat ramps. Powerboats are limited overall by the shallow water and prevalent limestone shoals and rocks

**Expect at parking SR 166 (Yancey) Bridge:**

- **Parking fee:** None
- **Bathrooms:** None
- **Hours of operation (gates close):** No gates
- **Camping:** None
- **Camping fees:** N/A
- **Crowds:** None
- **Boat Ramp:** Concrete boat ramp
- **Potable water source:** None
- **Canoe/kayak launch:** None

**Expect at parking Hinson Conservation and Recreation Area**

- **Parking fee:** None
- **Bathrooms:** None
- **Hours of operation (gates close):** Daytime hours
- **Camping:** None
- **Camping fees:** N/A
- **Crowds:** None
- **Boat Ramp:** None
- **Potable water source:** No
- **Canoe/kayak launch:** Yes. Launch may be too steep and uneven for wheelchairs.

**Expect at parking CR 280 (Magnolia) Bridge:**

- **Parking fee:** None
- **Bathrooms:** None
- **Hours of operation (gates close):** No gates
- **Camping:** None
- **Camping fees:** N/A
- **Crowds:** None
- **Boat Ramp:** Concrete boat ramp
- **Potable water source:** None
- **Canoe/kayak launch:** None

**Expect at parking CR 278 (Peacock) Bridge:**

- **Parking fee:** None
- **Bathrooms:** None
- **Hours of operation (gates close):** No gates
- **Camping:** None
- **Camping fees:** N/A
- **Crowds:** None
- **Boat Ramp:** Concrete boat ramp
- **Potable water source:** None

- **Canoe/kayak launch:** None

**Expect at parking Johnny Boy Landing:**

- **Parking fee:** None
- **Bathrooms:** portable toilet
- **Hours of operation (gates close):** No gates
- **Camping:** None
- **Camping fees:** N/A
- **Crowds:** Popular local spot; may be crowded on weekends and holidays
- **Boat Ramp:** Concrete boat ramp
- **Potable water source:** None
- **Canoe/kayak launch:** None

**Expect at parking CR 274:**

- **Parking fee:** None
- **Bathrooms:** None
- **Hours of operation (gates close):** No gates
- **Camping:** None
- **Camping fees:** N/A
- **Crowds:** None
- **Boat Ramp:** No
- **Potable water source:** None
- **Canoe/kayak launch:** Rocky and steep at bridge base on both sides

**Expect at parking Lamb Eddy Landing:**

- **Parking fee:** None
- **Bathrooms:** None
- **Hours of operation (gates close):** No gates
- **Camping:** primitive camping
- **Camping fees:** N/A
- **Crowds:** None
- **Boat Ramp:** concrete boat ramp
- **Potable water source:** None
- **Canoe/kayak launch:** None

**Expect at parking SR 20 Bridge:**

- **Parking fee:** None
- **Bathrooms:** Yes
- **Hours of operation (gates close):** No gates
- **Camping:** None
- **Camping fees:** N/A
- **Crowds:** May be crowded holidays and weekends
- **Boat Ramp:** Concrete boat ramp
- **Potable water source:** Yes
- **Canoe/kayak launch:** None

**Expect at parking Jehue Landing:**

- **Parking fee:** None
- **Bathrooms:** None
- **Hours of operation (gates close):** No gates
- **Camping:** None
- **Camping fees:** N/A
- **Crowds:** None
- **Boat Ramp:** boat ramp
- **Potable water source:** None
- **Canoe/kayak launch:** None

**Expect at parking SR 71 Bridge** (Scott's Ferry General Store & Campground):

- **Parking fee:** Fee to use private ramp
- **Bathrooms:** Yes
- **Hours of operation (gates close):** No gates
- **Camping:** Yes
- **Camping fees:** Yes, call (850) 674-2900
- **Crowds:** May be crowded holidays and weekends
- **Boat Ramp:** Concrete boat ramp
- **Potable water source:** Yes
- **Canoe/kayak launch:** None

**Cultural and historical features along the trail:**

Access this site for historical information and oral accounts of Jackson County and Chipola River history:  
[http://www.fnai.org/ARROW/almanac/history/history\\_oralhistory\\_Jackson.cfm](http://www.fnai.org/ARROW/almanac/history/history_oralhistory_Jackson.cfm)

**Notes:**

The first mile of the original canoe trail is no longer accessible going downstream from the state park. The old log chute area is now preserved as wildlife habitat. Downstream trips must begin at the SR 166 bridge. However, paddlers can go up the Chipola River in the state park and canoe rentals are available in the park. Inquire at the ranger station or call (850) 482-9598 for more information;  
<http://www.floridastateparks.org/floridacaverns/>.

Spring Creek and the section of the Chipola to Bear Paw Adventures may be crowded with tubers on warm weather weekends.