

# **Florida Department of Environmental Protection**

## **2019 Annual Air Monitoring Network Plan Addendum**

**Division of Air Resource Management  
Office of Air Monitoring  
December 2019**

Florida Department of Environmental Protection  
Division of Air Resource Management  
2600 Blair Stone Road  
Tallahassee, Florida 32399-2400  
[www.floridadep.gov](http://www.floridadep.gov)



## **TABLE OF CONTENTS**

<b>1.0 INTRODUCTION.....</b>	<b>1</b>
<b>2.0 SITE RELOCATIONS.....</b>	<b>2</b>
▪ HILLSBOROUGH COUNTY – EAST BAY SITE .....	2
➤ <i>Photos and Wind Rose for the Hillsborough County: East Bay Site - AQS # 12-057-0109.....</i>	<i>3</i>
▪ ORANGE COUNTY – WINEGARD ELEMENTARY SITE .....	6
➤ <i>Photos and Wind Rose for the Orange County: Skyview Drive Site - AQS # 12-095-0010.....</i>	<i>7</i>

## **LIST OF TABLES**

Table 1.1 Site Relocations.....	1
Table 2.1 East Bay Site Review Information - AQS Site # 12-057-0109 .....	2
Table 2.2 Skyview Drive Site Review Information - AQS Site # 12-095-0010.....	6

## **LIST OF FIGURES**

Figure 2.1 North from Proposed East Bay Site.....	3
Figure 2.2 East from Proposed East Bay Site.....	3
Figure 2.3 West from Proposed East Bay Site.....	4
Figure 2.4 South from Proposed East Bay Site.....	4
Figure 2.5 Aerial of Original and Proposed East Bay Site Locations .....	5
Figure 2.6 Wind Rose from East Bay Site.....	5
Figure 2.7 North from Proposed Skyview Drive Site.....	7
Figure 2.8 East from Proposed Skyview Drive Site.....	7
Figure 2.9 West from Proposed Skyview Drive Site.....	8
Figure 2.10 South from Proposed Skyview Drive Site.....	8
Figure 2.11 Aerial of Current and Proposed Skyview Drive Site Locations.....	9
Figure 2.12 Wind Rose from nearest NWS Meteorological Station .....	9

## 1.0 Introduction

The 2019 Air Monitoring Network Plan Addendum represents proposed site modifications that were not covered in the 2019 Annual Air Monitoring Network Plan. It provides information to the USEPA Region 4 Air and Radiation Division to facilitate a full evaluation of two site relocations within Florida's ambient air monitoring network. Table 1.1, below, provides a summary of each relocation. This addendum was publicly noticed from December 9, 2019 through January 9, 2020 and no comments were received during this period.

**Table 1.1 Site Relocations**

<b>AQS Site #</b>	<b>County</b>	<b>Site Name</b>	<b>Type</b>	<b>Pollutants</b>	<b>Area and Monitor in Attainment?</b>	<b>Modification</b>
12-057-0109	Hillsborough	East Bay	SLAMS	SO <sub>2</sub>	Yes	Relocation on existing property
12-095-0008	Orange	Winegard Elementary	SLAMS	Ozone	Yes	Relocation to a new property

## 2.0 Site Relocations

- Hillsborough County – East Bay Site

DEP is requesting approval to relocate the East Bay Site (AQS Site #: 12-057-0109) in Hillsborough County due to a request received from the landowner to relocate the site to another area of the property. The site will be relocated 42.8 meters (140.42 feet) northwest of the original site to accommodate this request. The site remains representative of the area’s air mass and will retain its AQS Site identification number. The site review information for the proposed location is presented in Table 2.1 and Figures 2.1 to 2.6, below.

**Table 2.1 East Bay Site Review Information - AQS Site # 12-057-0109**

	<b>East Bay Site</b>
<b>AQS Site #</b>	12-057-0109
<b>City (CBSA)</b>	Gibsonton (Tampa-St. Petersburg-Clearwater)
<b>Site Name</b>	East Bay
<b>Statement of Purpose</b>	Needed by Regulation
<b>Site Review Date</b>	06/19/2019
<b>County</b>	Hillsborough
<b>Location Latitude</b>	27.854210 N
<b>Location Longitude</b>	-82.383749 W
<b>Address</b>	9851 Highway 41, S, Gibsonton, FL 33534
<b>Objective</b>	Source Monitoring
<b>Pollutants Monitored</b>	SO <sub>2</sub>
<b>Sampling and Analysis Method</b>	Thermo 43i, Pulsed Fluorescence
<b>Spatial Scale</b>	Neighborhood
<b>Operating Schedule</b>	Continuous
<b>Network Type</b>	SLAMS
<b>Distance from Inlet to nearest:</b>	Tree Dripline = 18.0 meters Road = 22.4 meters Wall = NA
<b>Access</b>	Unlimited
<b>Owner of Land</b>	Harwell Rentals
<b>Other Monitored Parameters</b>	NA
<b>Inlet Height</b>	4.5 meters
<b>Comments</b>	This new location meets the siting criteria outlined in 40 CFR Part 58 Appendix E. The relocation is expected by February 1, 2020.

➤ ***Photos and Wind Rose for the Hillsborough County: East Bay Site - AQS # 12-057-0109***

**Figure 2.1 North from Proposed East Bay Site**



**Figure 2.2 East from Proposed East Bay Site**



**Figure 2.3 West from Proposed East Bay Site**



**Figure 2.4 South from Proposed East Bay Site**



Figure 2.5 Aerial of Original and Proposed East Bay Site Locations

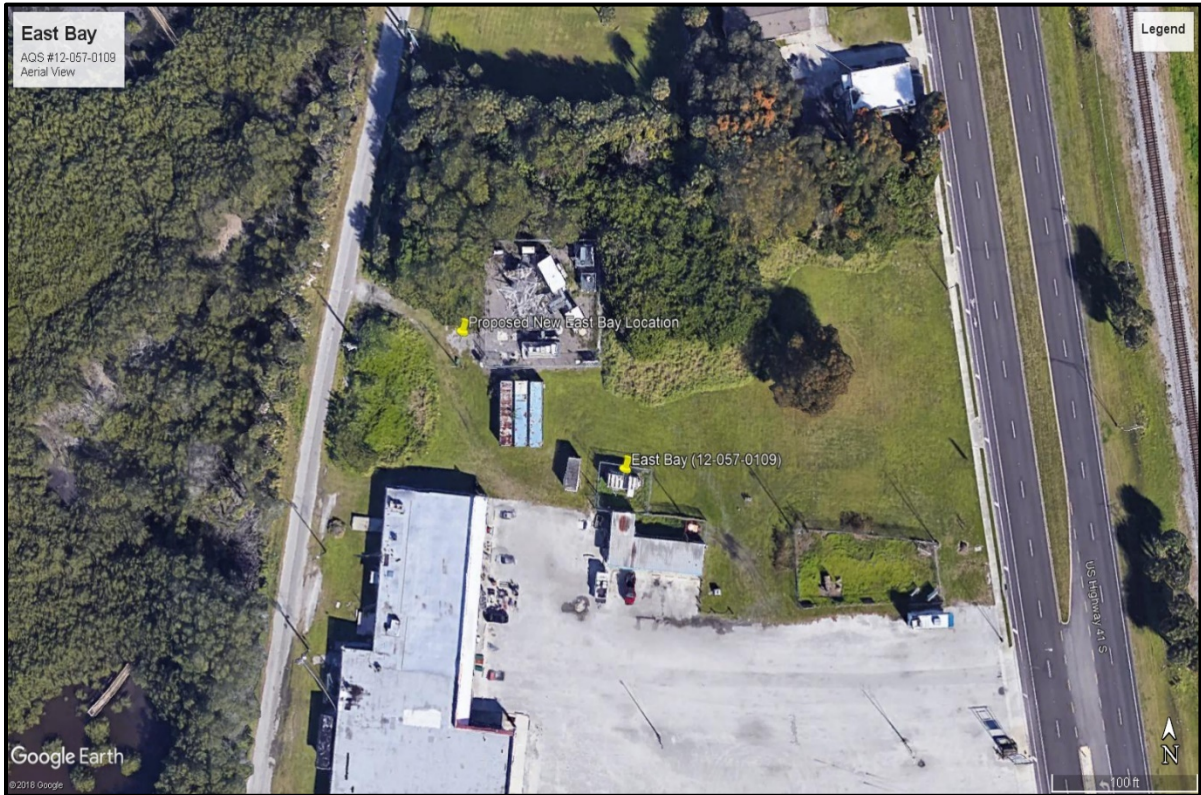
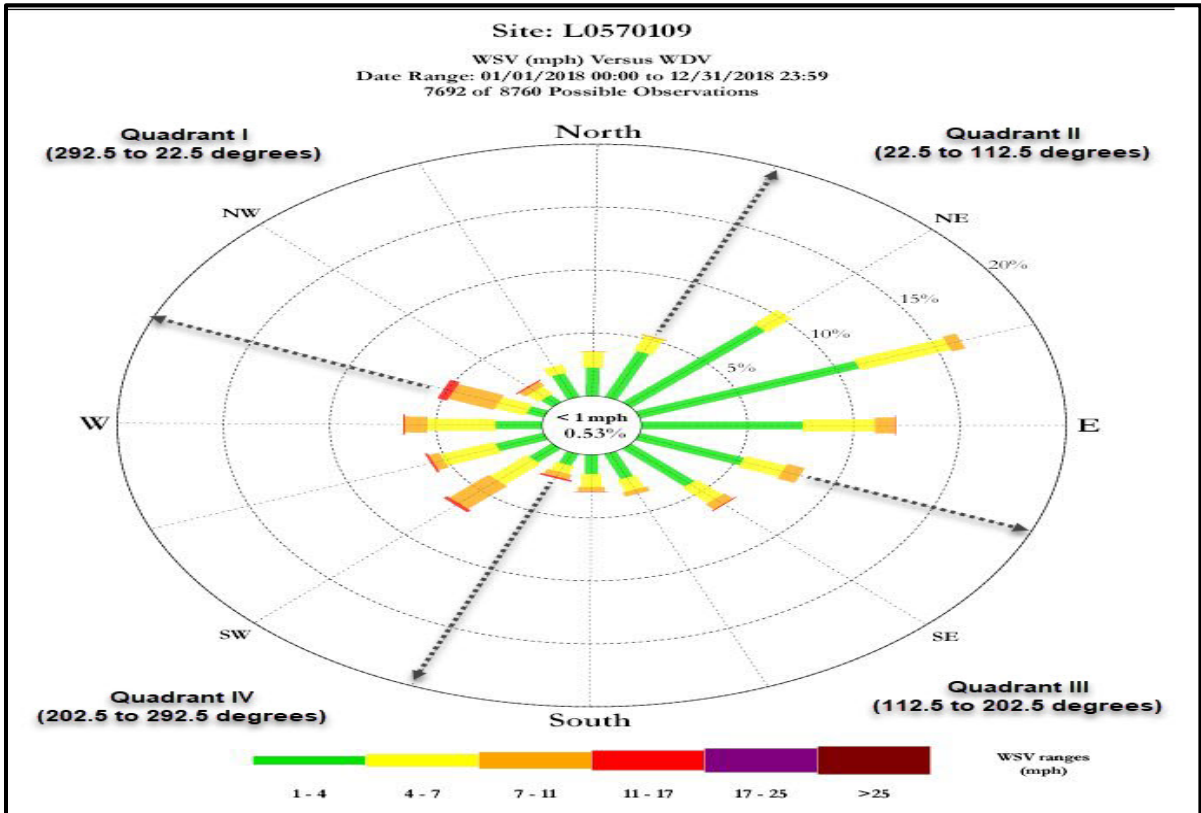


Figure 2.6 Wind Rose from East Bay Site



- Orange County – Winegard Elementary Site

DEP is requesting approval for the permanent relocation of the Winegard Elementary Site (AQS Site #: 12-095-0008) in Orange County due to ongoing construction and property changes at the current site location – 7055 Winegard Road, Orlando, FL 32809.

The new site, Skyview Drive, will be located approximately 1,530 meters (5019.69 ft) east of the current location and will be assigned a new AQS Site identification number (AQS Site # 12-095-0010) due to the change in address. The site review information for the proposed location is presented in Table 2.2 and Figures 2.7 to 2.12, below.

**Table 2.2 Skyview Drive Site Review Information - AQS Site # 12-095-0010**

	<b>Skyview Drive Site</b>
<b>AQS Site #</b>	12-095-0010
<b>City (CBSA)</b>	Orlando (Orlando-Kissimmee-Sanford)
<b>Site Name</b>	Skyview Drive
<b>Statement of Purpose</b>	Needed by Regulation
<b>Site Review Date</b>	10/02/2019*
<b>County</b>	Orange
<b>Location Latitude</b>	28.453167 N
<b>Location Longitude</b>	-81.397139 W
<b>Address</b>	7697 S. Orange Blossom Trail, Orlando, FL 32809
<b>Objective</b>	Population Exposure
<b>Pollutants Monitored</b>	Ozone
<b>Sampling and Analysis Method</b>	Thermo 49i, UV Photometry
<b>Spatial Scale</b>	Neighborhood
<b>Operating Schedule</b>	Continuous
<b>Network Type</b>	SLAMS
<b>Distance from Inlet to nearest:</b>	Tree Dripline = ~25 meters Road = 68 meters Wall = NA
<b>Access</b>	Unlimited
<b>Owner of Land</b>	Orange County
<b>Other Monitored Parameters</b>	NA
<b>Inlet Height</b>	4.5 meters
<b>Comments</b>	This new location meets the siting criteria outlined in 40 CFR Part 58 Appendix E. The relocation is expected by February 1, 2020.

\*The site review was performed by Orange County staff.



➤ Photos and Wind Rose for the Orange County: Skyview Drive Site - AOS # 12-095-0010

Figure 2.7 North from Proposed Skyview Drive Site

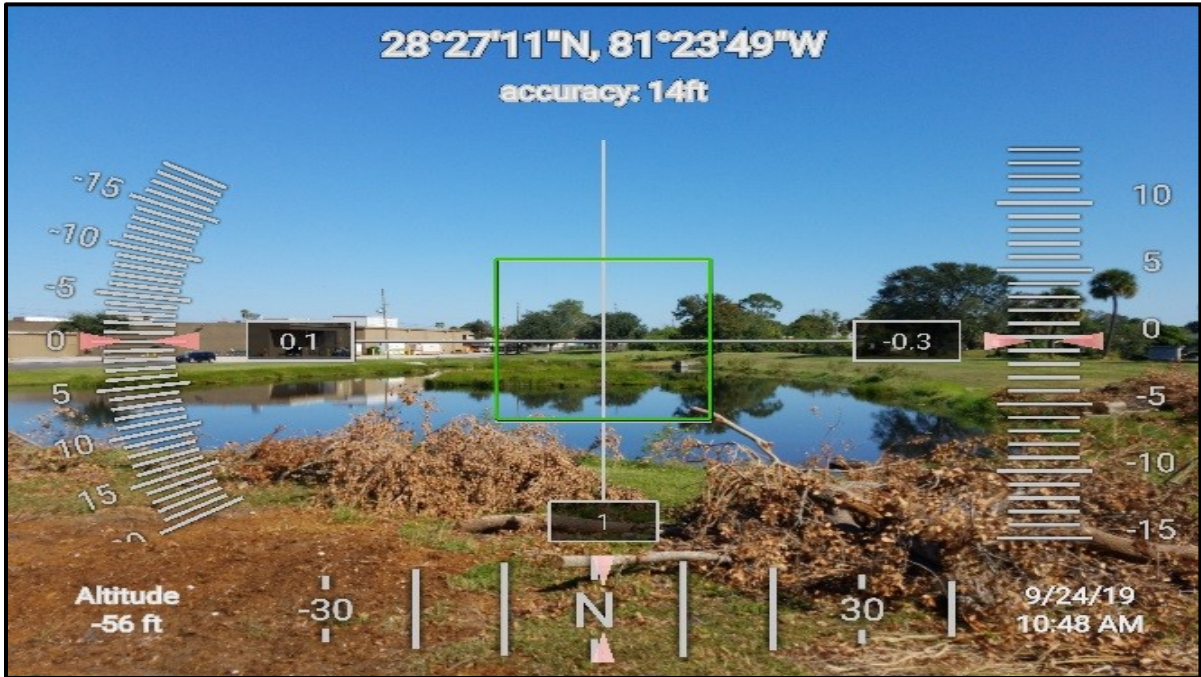


Figure 2.8 East from Proposed Skyview Drive Site

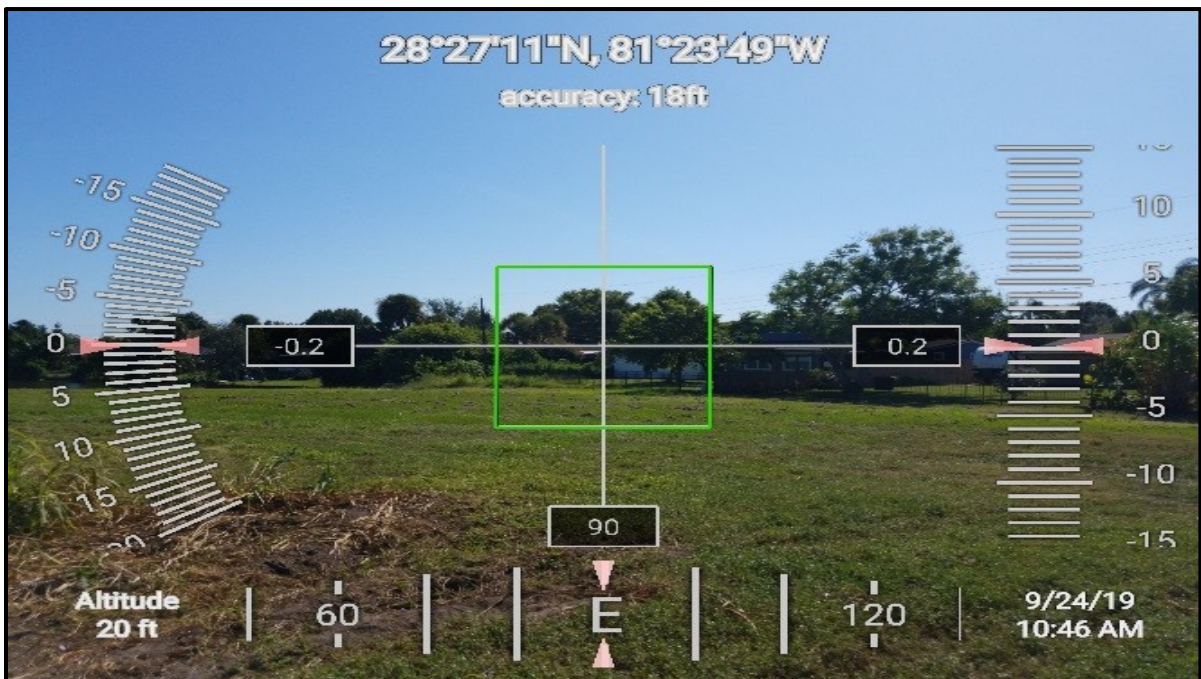


Figure 2.9 West from Proposed Skyview Drive Site

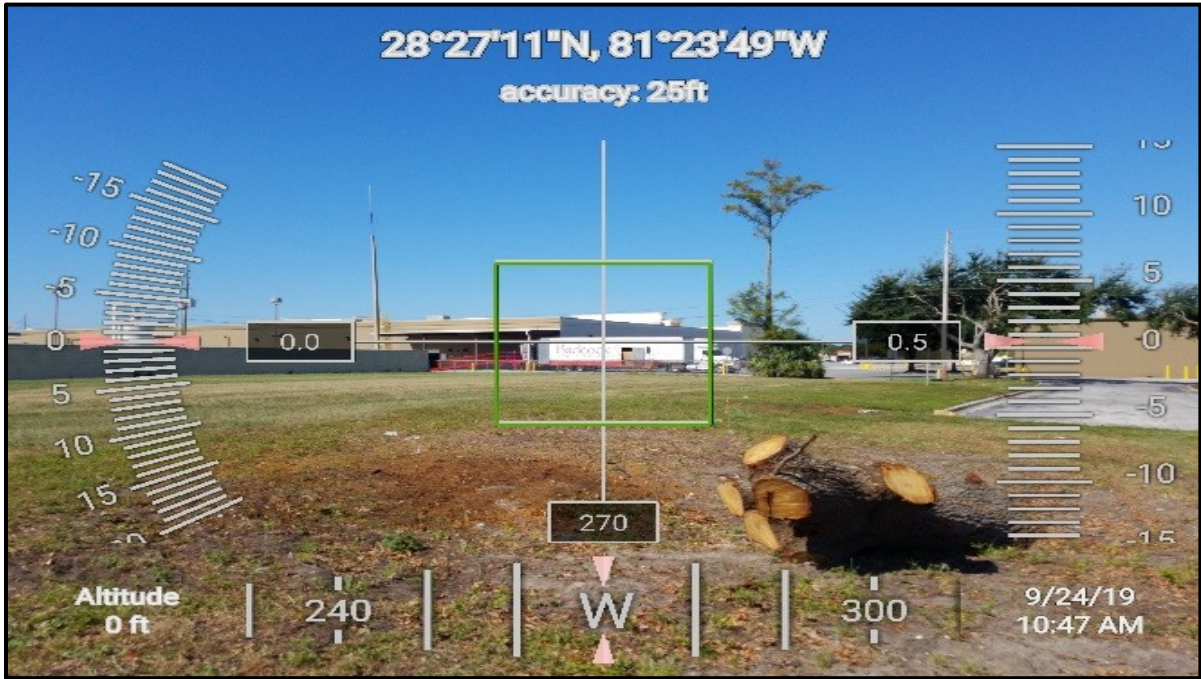
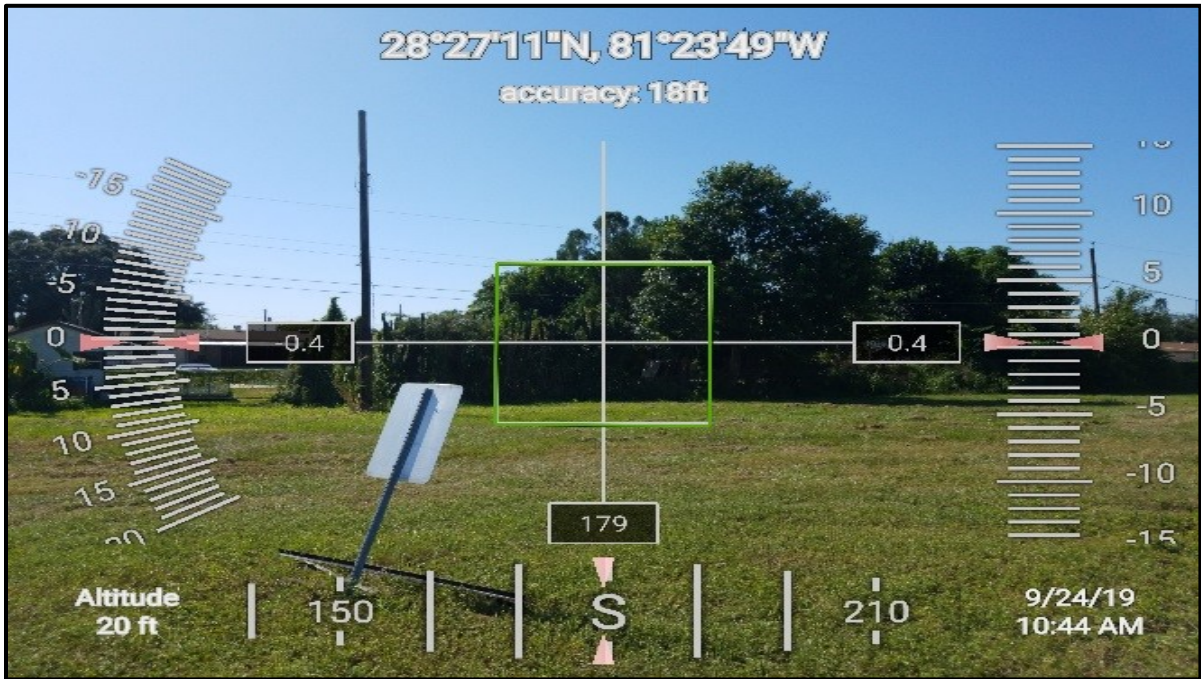


Figure 2.10 South from Proposed Skyview Drive Site



**Figure 2.11 Aerial of Current and Proposed Skyview Drive Site Locations**



**Figure 2.12 Wind Rose from nearest NWS Meteorological Station**

